

# UFF4000 IMPACT SERIES

## for Roof Deck, Wall/Column and Ceiling Mount Applications

### HORIZONTAL LIFELINE SYSTEMS

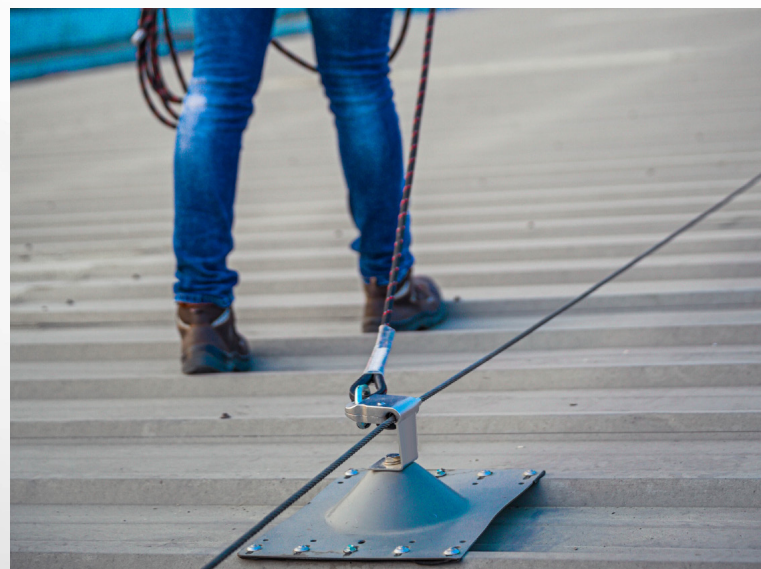
### 2024 GUIDE

## OVERVIEW

KStrong UFF4000 Impact™ engineered horizontal lifelines are designed for both commercial and industrial applications. Our roof mount, column/wall mount and ceiling mount systems are designed to keep workers safer in addressing requirements for maintenance, cleaning, access and inspections. They provide a permanent connection for up to four (4) workers without the need to disconnect along the entire length of the horizontal lifeline through the use of intermediate posts/anchors.

## HIGHLIGHTS

- Conforms to all OSHA codes and Applicable ANSI standards and is also third party certified to EN795:2012 Type C and TS 16415:2013, Norms EN 13463-1: 2009 and EN 13463-5: 2003
- Certified by Sira for ATEX to comply with use in potentially explosive atmosphere
- Ideal choice for use in Industries like Petroleum/ Petro-Chemical Plants without fear of causing explosion due to any spark



## HORIZONTAL LIFELINE SYSTEMS

- UFF4000 Wire Rope (Roof Mounted)
- UFF4000 Wire Rope (Wall/Column, Ceiling & Floor Mounted)

## VERTICAL LIFELINE SYSTEMS

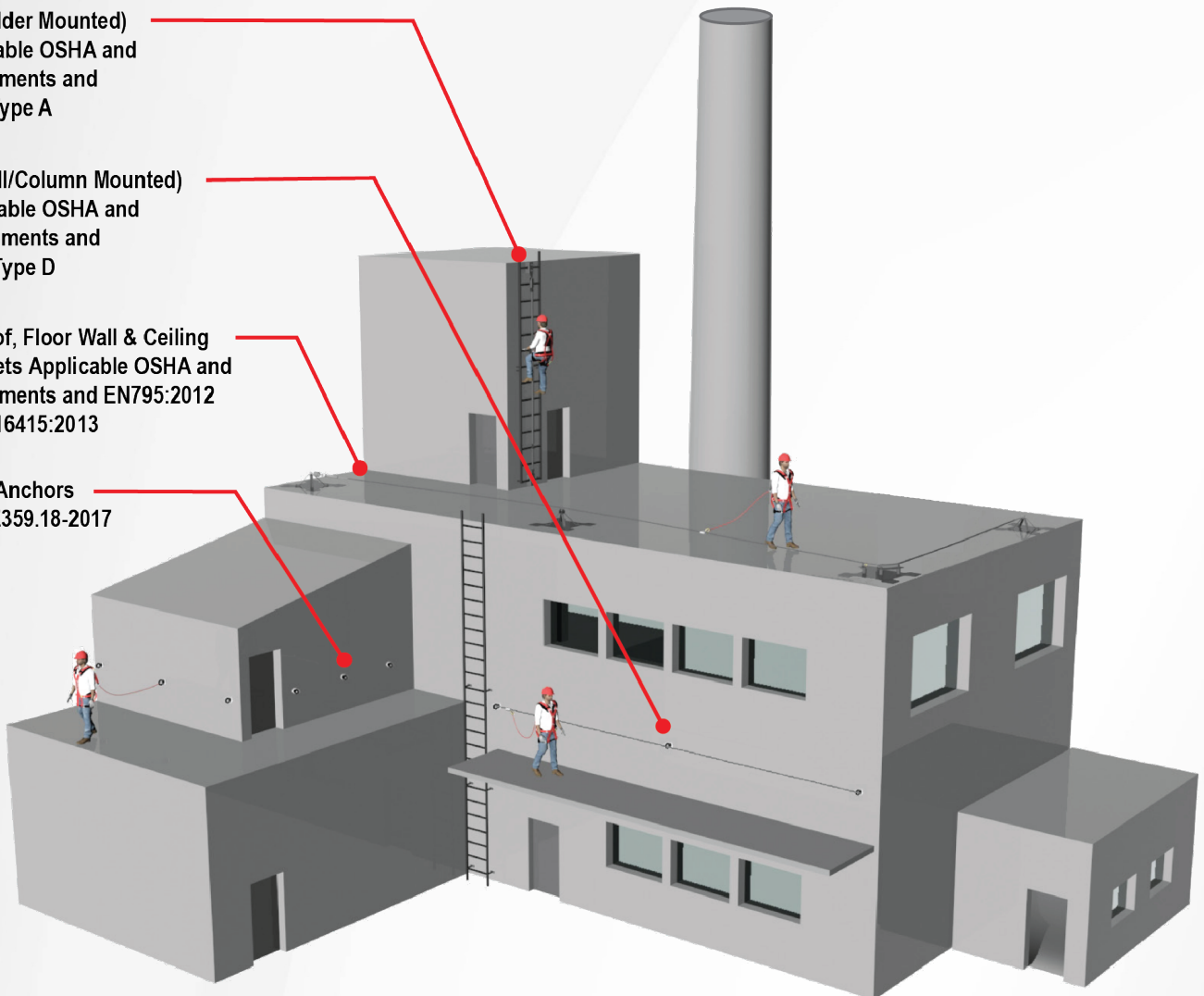
- UFF7000 Wire Rope (Ladder Mounted)

UFF7000 (Ladder Mounted)  
Meets Applicable OSHA and  
ANSI Requirements and  
EN795:2012 Type A

UFF4000 (Wall/Column Mounted)  
Meets Applicable OSHA and  
ANSI Requirements and  
EN795:2012 Type D

UFF4000 (Roof, Floor Wall & Ceiling  
Mounted) Meets Applicable OSHA and  
ANSI Requirements and EN795:2012  
Type C & TS 16415:2013

Single Point Anchors  
Meets ANSI Z359.18-2017





# SPECIFICATIONS



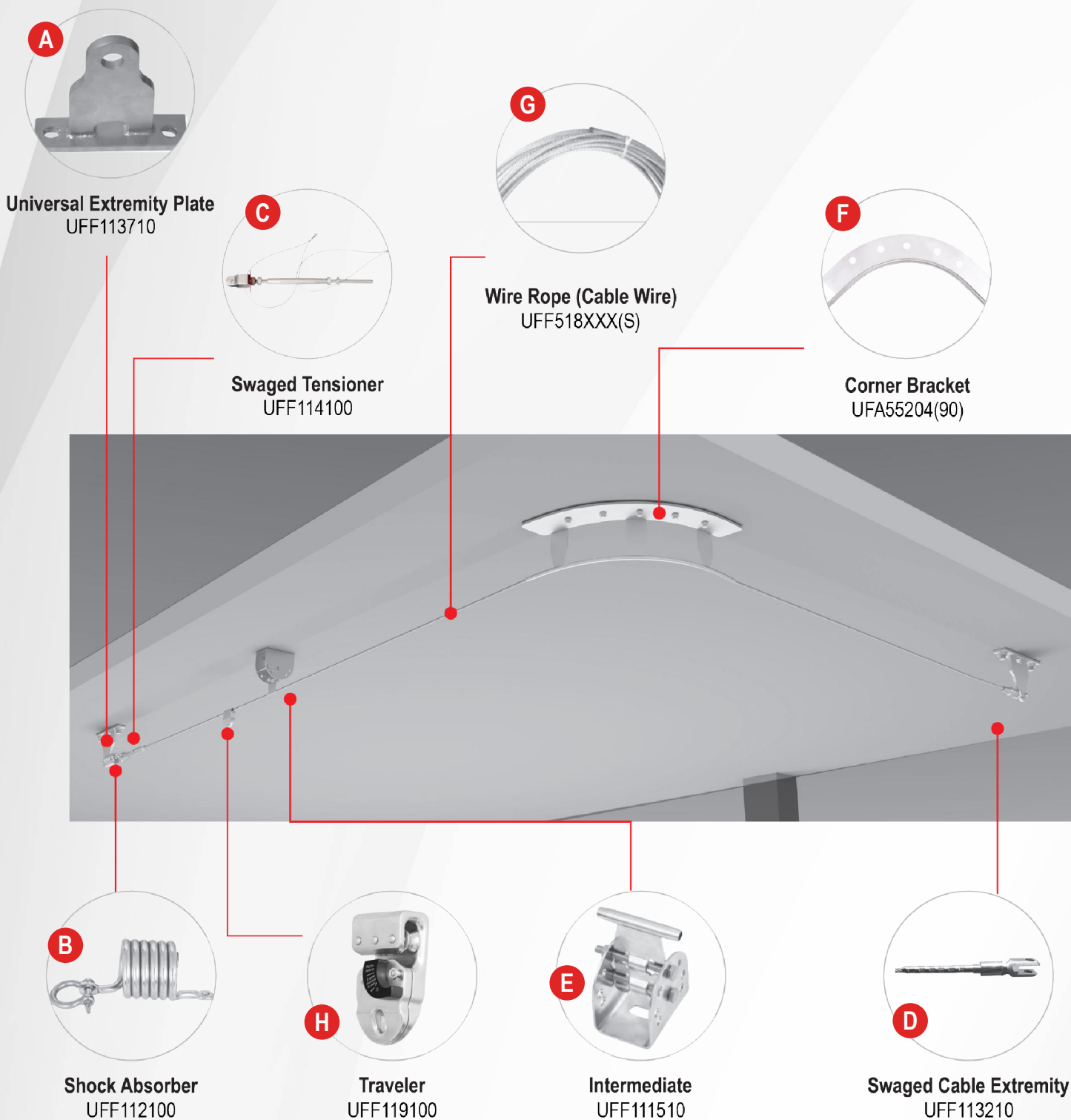
- The IMPACT Cable Line Fall Arrest System meets all applicable OSHA codes and ANSI standards and is certified to EN795:2012 Type A, B, C, and CEN/TS 16415:2013. It is suitable for up to four (4) users simultaneously. It is also being certified by Sira (Certification Number: 11ATEX6276X) for ATEX to comply with use in explosive atmospheres which conforms to Norms EN 13463-1:2009 and EN 13463-5:2003. Shuttle conforms and is certified to EN795:2012 Type B anchor device.
- Flexible anchor line with linear elastic performance properties with a defined elastic coefficient. The impact load generated by a fall arrest event will not exceed 2,248 lbs. (10Kn) as applied to the structure. Energy absorber can absorb up to 5,753ft./lbs. (7800 joules).
- The fall arrest system will be suitable for unrestricted use by up to four users at any one time and any point along the length of the system including between two anchor brackets.
- The rooftop anchor posts are manufactured from 316 stainless steel, 6061 T6 Aluminum, 6005 T5 Aluminum which suitable for metal roof and PEB structures.
- The span distance shall be between 40 ft. (12m) to 50 ft. (15m) between end, corner, and intermediate anchor brackets.
- Wire Rope to be Ø8mm 7 x 19 or 7 x 7 316 stainless steel wire cable with a 7,643 lbf. (34Kn) minimum breaking load.
- The swage termination is manufactured from 316 stainless steel. The swaging is done using a 29,225 lbf. (130kn) hydraulic swaging hand tool and hexlock dies at 6 positions.
- Extremity (End), corner, and intermediate brackets manufactured from 316 stainless steel.
- Labeled according to applicable ANSI and EN 365:2004 General requirements for instruction for use, maintenance, periodic examination, repair, marking, and packaging in accordance with OSHA, ANSI and EN365.
- System Design, application, installation, maintenance, repair, annual inspection, and certification undertaken only by KStrong Registered Installers. Details provided upon request.



# CEILING MOUNT APPLICATION



## UFF4000 (OVERHEAD/ CEILING MOUNTED)





# CEILING MOUNT APPLICATION



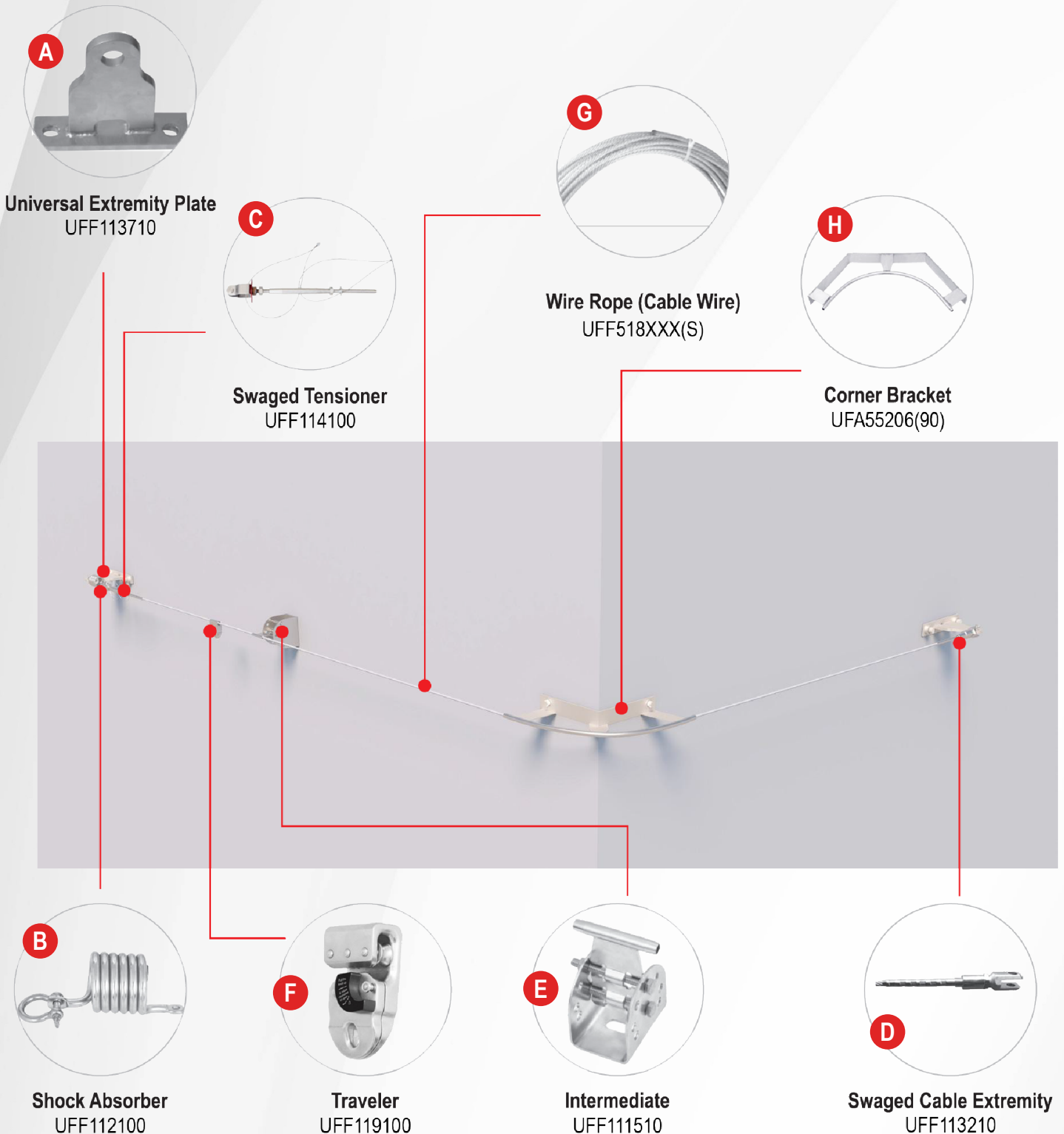
## UFF4000 (OVERHEAD/ CEILING MOUNTED)

Model	Description
<b>A</b> UFF113710	KStrong® IMPACT™ Extremity (Start/Stop) Anchor Plate (SS316) with (2) M12 Fasteners (Column / Wall and Overhead / Ceiling Mount HLL Systems)
<b>B</b> UFF112100	KStrong® IMPACT™ 12K Shock Absorber (Column / Wall, Overhead / Ceiling, and Roof Mount HLL Systems)
<b>C</b> UFF114100	KStrong® IMPACT™ Tensioner with Swaging
<b>D</b> UFF113210	KStrong® IMPACT™ Swaged Cable Termination
<b>E</b> UFF111510	KStrong® IMPACT™ Adjustable Intermediate Bracket (Column / Wall, Overhead / Ceiling, and Roof Mount HLL Systems)
<b>F</b> UFA55204(90)	KStrong® IMPACT™ 90° Intermediate Corner Bracket (Overhead / Ceiling and Roof Mount HLL Systems)
UFA55204(135)	KStrong® IMPACT™ 135° Intermediate Corner Bracket (Overhead / Ceiling and Roof Mount HLL Systems)
<b>G</b> UFF5187X7XXXS	KStrong® 7x7 Wire Cable (Column / Wall, Overhead / Ceiling, and Roof Mount HLL Systems)
UFF115101	KStrong® IMPACT™ HLL Inspection Plate
UFF111506	KStrong® IMPACT™ Repair Tube for HLL's Utilizing 8mm 7x19 Wire Cable (Optional)
<b>H</b> UFF119100	KStrong® IMPACT™ Premium Removable Shuttle with Wheels (Column / Wall and Overhead / Ceiling Mount HLL Systems)(Required for Long Span Systems with Intermediate Anchors)
UFX206008	KStrong® IMPACT™ Double Tandem Pulley (Column / Wall and Overhead / Ceiling Mount Short Span Systems)(NO Intermediate Anchors)
UFA55002(SUB1)	KStrong® IMPACT™ Fastener Assembly for Low-Profile Base Plate (Standing Seam, Metal Panel / R-Panel, Built-Up TPO, and Concrete Roof Decks) or Overhead / Ceiling Anchor
UFA55004(90) (SUB1)	KStrong® IMPACT™ 90° Corner Energy Absorbing Bracket for Use with all Low-Profile Base Plates (Standing Seam, Metal Panel / R-Panel, Built-Up TPO, and Concrete Roof Decks) and Overhead / Ceiling Anchors
UFA55005(SUB1) (CB)	KStrong® IMPACT™ Variable Bend (15° Max) Intermediate Bracket for Use with all Low-Profile Base Plates (Standing Seam, Metal Panel / R-Panel, Built-Up TPO, and Concrete Roof Decks) and Overhead / Ceiling Anchors
UFA55005(SUB1)	KStrong® IMPACT™ Intermediate Bracket for Use with all Low-Profile Base Plates (Standing Seam, Metal Panel / R-Panel, Built-Up TPO, and Concrete Roof Decks) and Overhead / Ceiling Anchors

# WALL/COLUMN MOUNT APPLICATION



## UFF4000 (WALL/COLUMN MOUNTED)





# WALL/COLUMN MOUNT APPLICATION



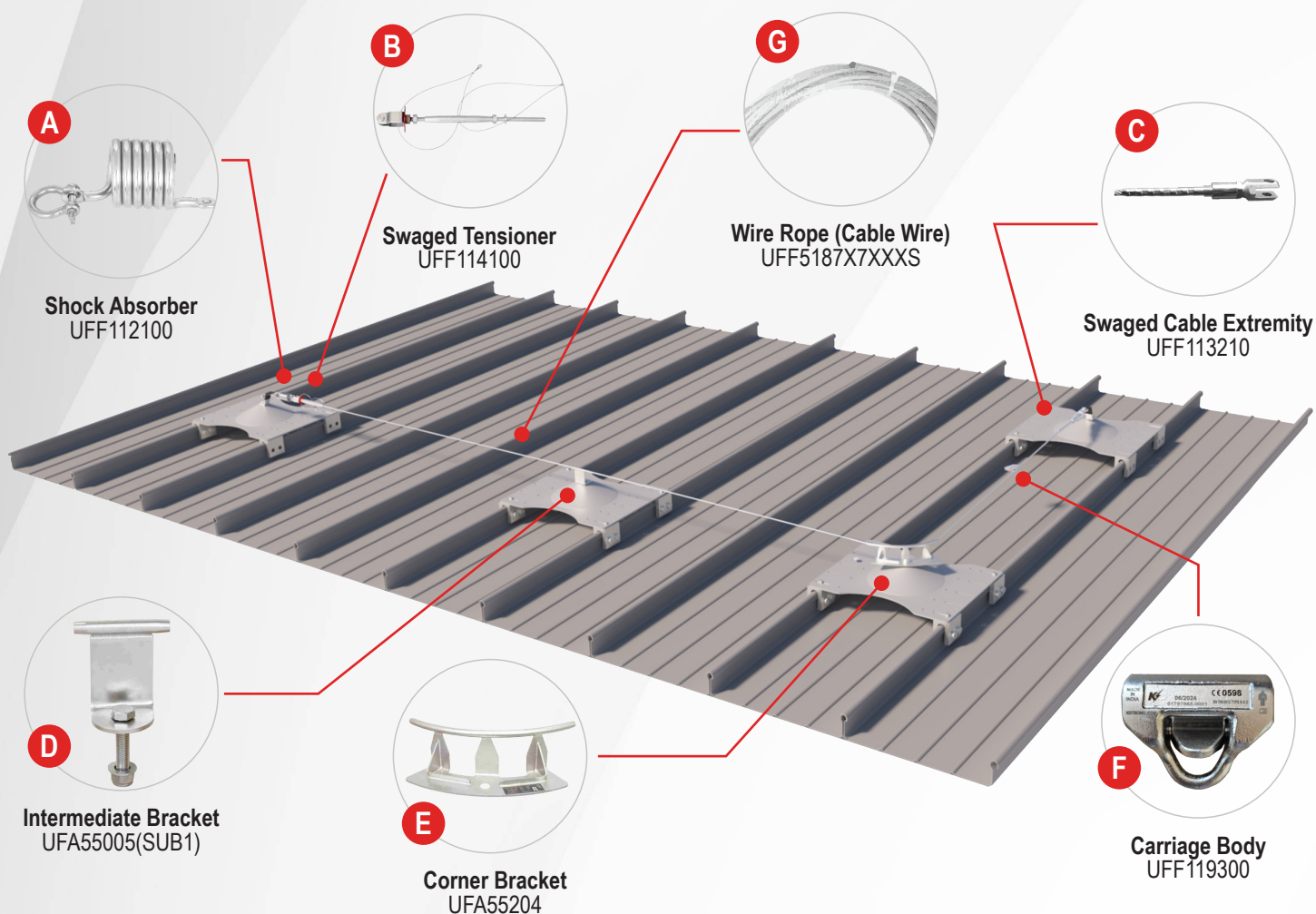
## UFF4000 (WALL/COLUMN MOUNTED)

Model	Description
<b>A</b> UFF113710	KStrong® IMPACT™ Extremity (Start/Stop) Anchor Plate (SS316) with (2) M12 Fasteners (Column / Wall and Overhead / Ceiling Mount HLL Systems)
<b>B</b> UFF112100	KStrong® IMPACT™ 12K Shock Absorber (Column / Wall, Overhead / Ceiling, and Roof Mount HLL Systems)
<b>C</b> UFF114100	KStrong® IMPACT™ Tensioner with Swaging
<b>D</b> UFF113210	KStrong® IMPACT™ Swaged Cable Termination
<b>E</b> UFF111510	KStrong® IMPACT™ Adjustable Intermediate Bracket (Column / Wall, Overhead / Ceiling, and Roof Mount HLL Systems)
<b>F</b> UFF119100	KStrong® IMPACT™ Premium Removable Shuttle with Wheels (Column / Wall and Overhead / Ceiling Mount HLL Systems)(Required for Long Span Systems with Intermediate Anchors)
UFF119300	KStrong® IMPACT™ Removable Shuttle (Column / Wall and Roof Mount HLL Systems ONLY)
<b>G</b> UFF5187X7XXXS	KStrong® 7x7 Wire Cable (Column / Wall, Overhead / Ceiling, and Roof Mount HLL Systems)
UFF115101	KStrong® IMPACT™ HLL Inspection Plate
UFF111506	KStrong® IMPACT™ Repair Tube for HLL's Utilizing 8mm 7x19 Wire Cable (Optional)
UFA55205(90)	KStrong® IMPACT™ 90° Intermediate Internal Corner Bracket (Column / Wall Mount HLL Systems)
<b>H</b> UFA55206(90)	KStrong® IMPACT™ 90° Intermediate External Corner Bracket (Column / Wall Mount HLL Systems)
UFX206008	KStrong® IMPACT™ Double Tandem Pulley (Column / Wall and Overhead / Ceiling Mount Short Span Systems)(NO Intermediate Anchors)

# ROOF/FLOOR MOUNT APPLICATION IMPACT COMPONENTS



## STANDING SEAM ROOF DECK (LOW PROFILE)





# ROOF/FLOOR MOUNT APPLICATION IMPACT COMPONENTS



## STANDING SEAM ROOF DECK (LOW PROFILE)

Model	Description
A UFF112100	KStrong® IMPACT™ 12K Shock Absorber (Column / Wall, Overhead / Ceiling, and Roof Mount HLL Systems)
B UFF114100	KStrong® IMPACT™ Tensioner with Swaging
C UFF113210	KStrong® IMPACT™ Swaged Cable Termination
UFA55006(SUB1)	KStrong® IMPACT™ Extremity (Start/Stop) Energy Absorbing Bracket for all Roof Mount HLL Systems / Single Point Anchors
D UFF111510	KStrong® IMPACT™ Adjustable Intermediate Bracket (Column / Wall, Overhead / Ceiling, and Roof Mount HLL Systems)
D UFA55005(SUB1)	KStrong® IMPACT™ Intermediate Bracket for Use with all Low-Profile Base Plates (Standing Seam, Metal Panel / R-Panel, Built-Up TPO, and Concrete Roof Decks)
D UFA55311S24	KStrong® IMPACT™ Low Profile Intermediate Anchor Post Assembly for Standing Seam Roof Deck (Standing Seam Widths up to 24")
D UFA55311S39	KStrong® IMPACT™ Low Profile Intermediate Anchor Post Assembly for Standing Seam Roof Deck (Standing Seam Widths up to 39")
E UFA55204(90)	KStrong® IMPACT™ 90° Intermediate Corner Bracket (Overhead / Ceiling and Roof Mount HLL Systems)
E UFA55204(135)	KStrong® IMPACT™ 135° Intermediate Corner Bracket (Overhead / Ceiling and Roof Mount HLL Systems)
E UFA55004(90)(SUB1)	KStrong® IMPACT™ 90° Corner Energy Absorbing Bracket for Use with all Low-Profile Base Plates (Standing Seam, Metal Panel / R-Panel, Built-Up TPO, and Concrete Roof Decks) and Overhead / Ceiling Anchors
E UFA55005(SUB1)(CB)	KStrong® IMPACT™ Variable Bend (15° Max) Intermediate Bracket for Use with all Low-Profile Base Plates (Standing Seam, Metal Panel / R-Panel, Built-Up TPO, and Concrete Roof Decks) and Overhead / Ceiling Anchors
E UFA55411S24	KStrong® IMPACT™ Low Profile Variable Bend (15° Max) Anchor Post Assembly for Standing Seam Roof Deck (Standing Seam Widths up to 24")
E UFA55411S39	KStrong® IMPACT™ Low Profile Variable Bend (15° Max) Anchor Post Assembly for Standing Seam Roof Deck (Standing Seam Widths up to 39")
E UFA55209(90)S24	KStrong® IMPACT™ Low Profile 90° Corner Anchor Post Assembly for Standing Seam Roof Deck (Standing Seam Widths up to 24")
E UFA55209(90)S39	KStrong® IMPACT™ Low Profile 90° Corner Anchor Post Assembly for Standing Seam Roof Deck (Standing Seam Widths up to 39")
F UFF119300	KStrong® IMPACT™ Removable Shuttle (Column / Wall and Roof Mount HLL Systems ONLY)
G UFF5187X7XXXS	KStrong® 7x7 Wire Cable (Column / Wall, Overhead / Ceiling, and Roof Mount HLL Systems)
UFA55111S24	KStrong® IMPACT™ Low Profile Extremity (Start/Stop) Energy Absorbing Anchor Post Assembly for Standing Seam Roof Deck (Standing Seam Widths up to 24")
UFA55111S39	KStrong® IMPACT™ Low Profile Extremity (Start/Stop) Energy Absorbing Anchor Post Assembly for Standing Seam Roof Deck (Standing Seam Widths up to 39")
UFF115101	KStrong® IMPACT™ HLL Inspection Plate
UFF111506	KStrong® IMPACT™ Repair Tube for HLL's Utilizing 8mm 7x19 Wire Cable (Optional)
UFA55002(SUB1)	KStrong® IMPACT™ Fastener Assembly for Low-Profile Base Plate (Standing Seam, Metal Panel / R-Panel, Built-Up TPO, and Concrete Roof Decks) or Overhead / Ceiling Anchor
UFA55001	KStrong® IMPACT™ Low-Profile Base Plate for Standing Seam or Concrete Roof Decks
UFA55003(SUB1)	KStrong® IMPACT™ Extension Rail Set with Fasteners for Low Profile Standing Seam Base Plate (Standing Seam Widths up to 39")
UFA55003(SUB2)	KStrong® IMPACT™ Extension Rail Set with Fasteners for Low Profile Standing Seam Base Plate (Standing Seam Widths up to 24")
UFFS5TX	S-5! Clamp (Type X being either A, B, C, D, E, F, G, or H style)*



**LMCUBS**  
Est. 1966

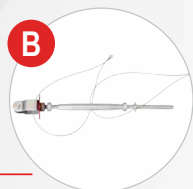
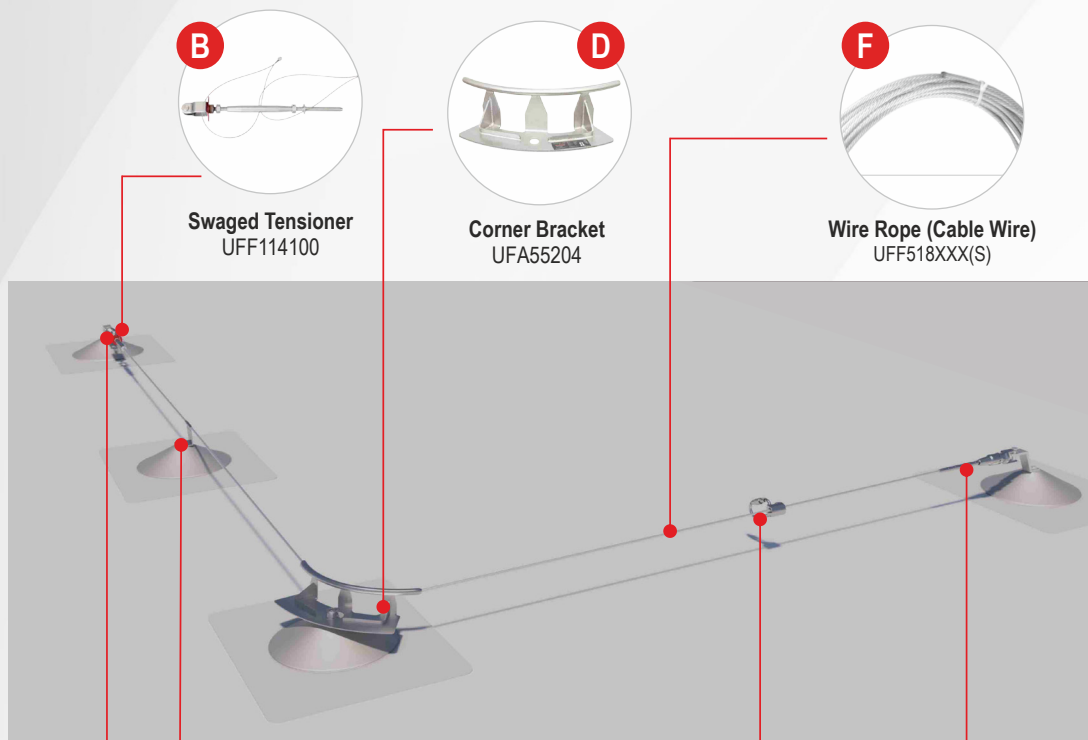
Founded by a veteran metal roof expert, S-5! has been the leading authority on metal roof attachment solutions since 1992. S-5!'s zero-penetration clamps and lifetime brackets attach ancillary items to standing seam and exposed-fastened metal roofs respectively, while maintaining roof integrity and warranties. For more information, visit [www.S-5.com](http://www.S-5.com).

800-284-1412 / [lmcubbs.com](http://lmcubbs.com)

# ROOF/FLOOR MOUNT APPLICATION IMPACT COMPONENTS



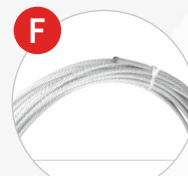
## BUILT-UP / MEMBRANE TPO ROOF DECK (LOW PROFILE)



**Swaged Tensioner**  
UFF114100



**Corner Bracket**  
UFA55204



**Wire Rope (Cable Wire)**  
UFF518XXX(S)



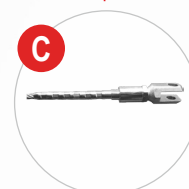
**Shock Absorber**  
UFF112100



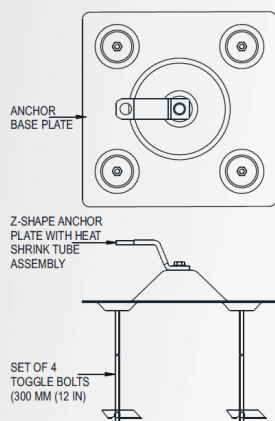
**Intermediate**  
UFA55005(SUB1)



**Carriage Body**  
UFF119300

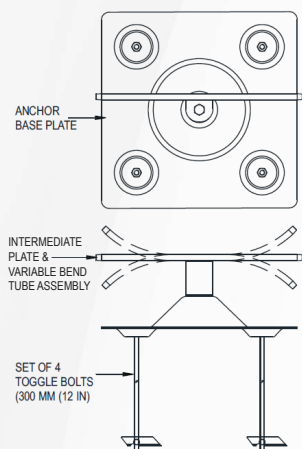


**Swaged Cable Extremity**  
UFF113210



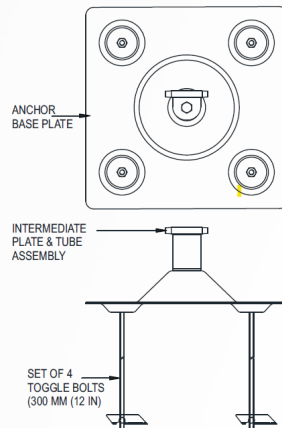
ANCHOR POST (EXTREMITY) WITH SET  
OF 4 NOS TOGGLE ANCHOR

**H** UFA55111TG12/18)



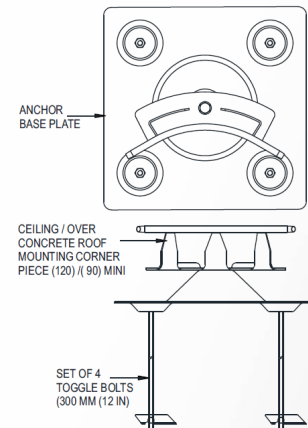
ANCHOR POST (INTERMEDIATE) WITH SET  
OF 4 NOS TOGGLE ANCHOR

**L** UFA55411TG12/18)



ANCHOR POST (INTERMEDIATE) WITH SET  
OF 4 NOS TOGGLE ANCHOR

**K** UFA55311TG12/18)



ANCHOR POST (CORNER) WITH SET  
OF 4 NOS TOGGLE ANCHOR

**J** UFA55209(90)TG12/18



# ROOF/FLOOR MOUNT APPLICATION IMPACT COMPONENTS



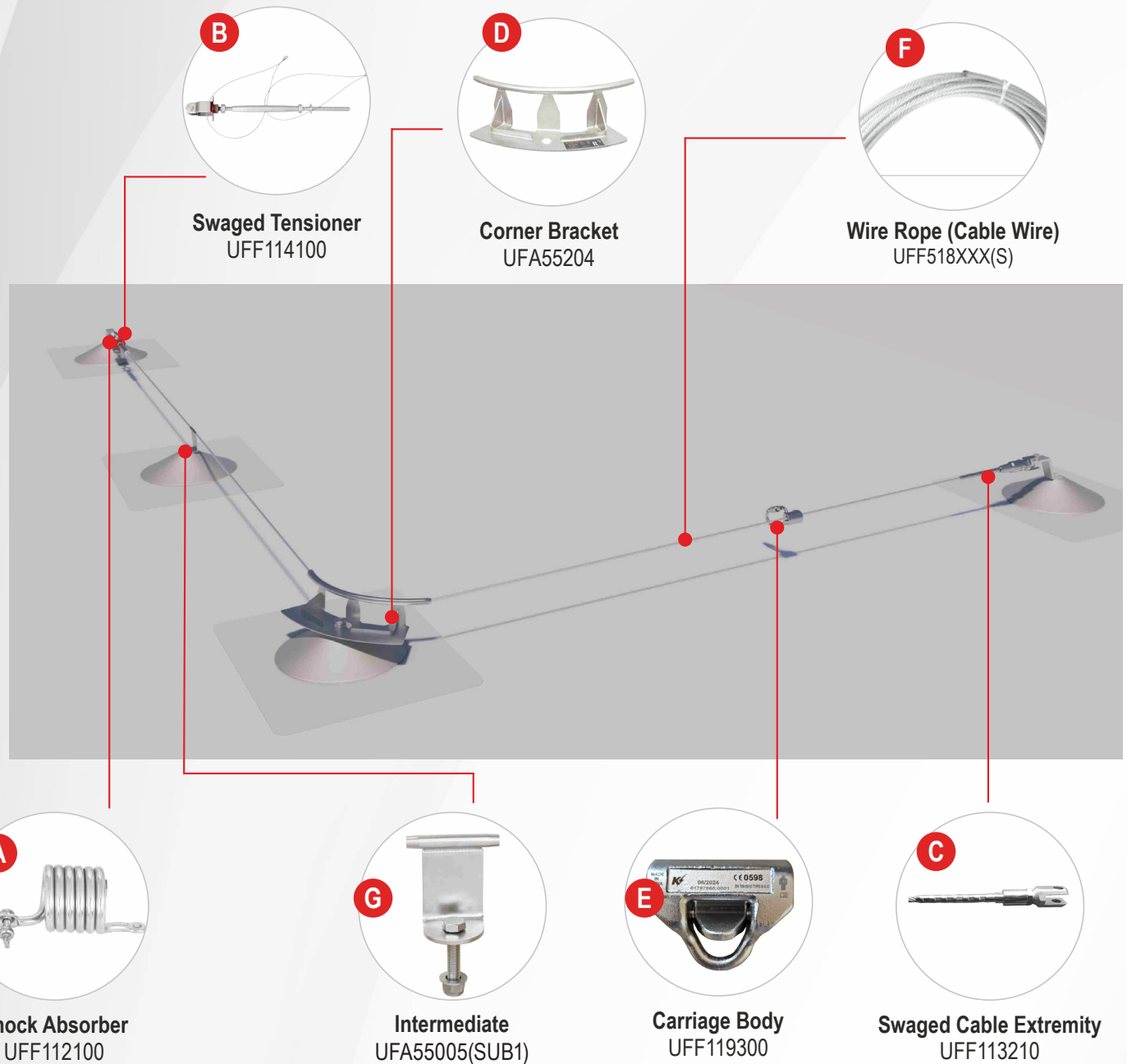
## BUILT-UP / MEMBRANE TPO ROOF DECK (LOW PROFILE)

Model	Description
<b>A</b> UFF112100	KStrong® IMPACT™ 12K Shock Absorber (Column / Wall, Overhead / Ceiling, and Roof Mount HLL Systems)
<b>B</b> UFF114100	KStrong® IMPACT™ Tensioner with Swaging
<b>C</b> UFF113210	KStrong® IMPACT™ Swaged Cable Termination
UFF111510	KStrong® IMPACT™ Adjustable Intermediate Bracket (Column / Wall, Overhead / Ceiling, and Roof Mount HLL Systems)
<b>D</b> UFA55204(90)	KStrong® IMPACT™ 90° Intermediate Corner Bracket (Overhead / Ceiling and Roof Mount HLL Systems)
<b>D</b> UFA55204(135)	KStrong® IMPACT™ 135° Intermediate Corner Bracket (Overhead / Ceiling and Roof Mount HLL Systems)
<b>E</b> UFF119300	KStrong® IMPACT™ Removable Shuttle (Column / Wall and Roof Mount HLL Systems ONLY)
<b>F</b> UFF5187X7XXXS	KStrong® 7x7 Wire Cable (Column / Wall, Overhead / Ceiling, and Roof Mount HLL Systems)
UFF115101	KStrong® IMPACT™ HLL Inspection Plate
UFF111506	KStrong® IMPACT™ Repair Tube for HLL's Utilizing 8mm 7x19 Wire Cable (Optional)
UFA55006(SUB1)	KStrong® IMPACT™ Extremity (Start/Stop) Energy Absorbing Bracket for all Roof Mount HLL Systems / Single Point Anchors
UFA55002(SUB1)	KStrong® IMPACT™ Fastener Assembly for Low-Profile Base Plate (Standing Seam, Metal Panel / R-Panel, Built-Up TPO, and Concrete Roof Decks) or Overhead / Ceiling Anchor
UFA55004(90)(SUB1)	KStrong® IMPACT™ 90° Corner Energy Absorbing Bracket for Use with all Low-Profile Base Plates (Standing Seam, Metal Panel / R-Panel, Built-Up TPO, and Concrete Roof Decks) and Overhead / Ceiling Anchors
UFA55005(SUB1)(CB)	KStrong® IMPACT™ Variable Bend (15° Max) Intermediate Bracket for Use with all Low-Profile Base Plates (Standing Seam, Metal Panel / R-Panel, Built-Up TPO, and Concrete Roof Decks) and Overhead / Ceiling Anchors
<b>G</b> UFA55005(SUB1)	KStrong® IMPACT™ Intermediate Bracket for Use with all Low-Profile Base Plates (Standing Seam, Metal Panel / R-Panel, Built-Up TPO, and Concrete Roof Decks)
UFA55001(TG)	KStrong® IMPACT™ Low-Profile Base Plate for Built-Up / Membrane TPO Roof Decks
UFA55312(SUB1)(12")	Set of 4 Toggle Bolts 12" (300mm)
UFA55312(SUB2)(18")	Set of 4 Toggle Bolts 18" (450mm)
<b>H</b> UFA55111TG12	KStrong® IMPACT™ Low Profile Extremity (Start/Stop) Energy Absorbing Anchor Post Assembly for Built-Up / Membrane TPO Roof Deck with 12" Toggle Bolts
<b>H</b> UFA55111TG18	KStrong® IMPACT™ Low Profile Extremity (Start/Stop) Energy Absorbing Anchor Post Assembly for Built-Up / Membrane TPO Roof Deck with 18" Toggle Bolts
<b>J</b> UFA55209(90)TG12	KStrong® IMPACT™ Low Profile 90° Corner Anchor Post Assembly for Built-Up / Membrane TPO Roof Deck with 12" Toggle Bolts
<b>J</b> UFA55209(90)TG18	KStrong® IMPACT™ Low Profile 90° Corner Anchor Post Assembly for Built-Up / Membrane TPO Roof Deck with 18" Toggle Bolts
<b>K</b> UFA55311TG12	KStrong® IMPACT™ Low Profile Intermediate Anchor Post Assembly for Built-Up / Membrane TPO Roof Deck with 12" Toggle Bolts
<b>K</b> UFA55311TG18	KStrong® IMPACT™ Low Profile Intermediate Anchor Post Assembly for Built-Up / Membrane TPO Roof Deck with 18" Toggle Bolts
<b>L</b> UFA55411TG12	KStrong® IMPACT™ Low Profile Variable Bend (15° Max) Anchor Post Assembly for Built-Up / Membrane TPO Roof Deck with 12" Toggle Bolts
<b>L</b> UFA55411TG18	KStrong® IMPACT™ Low Profile Variable Bend (15° Max) Anchor Post Assembly for Built-Up / Membrane TPO Roof Deck with 18" Toggle Bolts

# ROOF/FLOOR MOUNT APPLICATION IMPACT COMPONENTS



## CONCRETE ROOF DECK

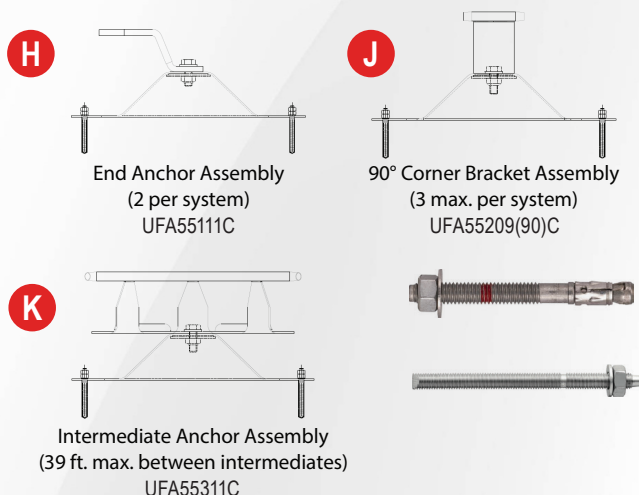




# ROOF/FLOOR MOUNT APPLICATION IMPACT COMPONENTS



## CONCRETE ROOF DECK



Model	Description
A UFF112100	KStrong® IMPACT™ 12K Shock Absorber (Column / Wall, Overhead / Ceiling, and Roof Mount HLL Systems)
B UFF114100	KStrong® IMPACT™ Tensioner with Swaging
C UFF113210	KStrong® IMPACT™ Swaged Cable Termination
UFF111510	KStrong® IMPACT™ Adjustable Intermediate Bracket (Column / Wall, Overhead / Ceiling, and Roof Mount HLL Systems)
D UFA55204(90)	KStrong® IMPACT™ 90° Intermediate Corner Bracket (Overhead / Ceiling and Roof Mount HLL Systems)
D UFA55204(135)	KStrong® IMPACT™ 135° Intermediate Corner Bracket (Overhead / Ceiling and Roof Mount HLL Systems)
E UFF119300	KStrong® IMPACT™ Removable Shuttle (Column / Wall and Roof Mount HLL Systems ONLY)
F UFF5187X7XXXS	KStrong® 7x7 Wire Cable (Column / Wall, Overhead / Ceiling, and Roof Mount HLL Systems)
UFF115101	KStrong® IMPACT™ HLL Inspection Plate
UFF111506	KStrong® IMPACT™ Repair Tube for HLL's Utilizing 8mm 7x19 Wire Cable (Optional)
UFA55006(SUB1)	KStrong® IMPACT™ Extremity (Start/Stop) Energy Absorbing Bracket for all Roof Mount HLL Systems / Single Point Anchors
UFA55002(SUB1)	KStrong® IMPACT™ Fastener Assembly for Low-Profile Base Plate (Standing Seam, Metal Panel / R-Panel, Built-Up TPO, and Concrete Roof Decks) or Overhead / Ceiling Anchor
UFA55004(90)(SUB1)	KStrong® IMPACT™ 90° Corner Energy Absorbing Bracket for Use with all Low-Profile Base Plates (Standing Seam, Metal Panel / R-Panel, Built-Up TPO, and Concrete Roof Decks) and Overhead / Ceiling Anchors
UFA55005(SUB1)(CB)	KStrong® IMPACT™ Variable Bend (15° Max) Intermediate Bracket for Use with all Low-Profile Base Plates (Standing Seam, Metal Panel / R-Panel, Built-Up TPO, and Concrete Roof Decks) and Overhead / Ceiling Anchors
G UFA55005(SUB1)	KStrong® IMPACT™ Intermediate Bracket for Use with all Low-Profile Base Plates (Standing Seam, Metal Panel / R-Panel, Built-Up TPO, and Concrete Roof Decks)
UFA55001	KStrong® IMPACT™ Low-Profile Base Plate for Standing Seam or Concrete Roof Decks
H UFA55111C	KStrong® IMPACT™ Low Profile Extremity (Start/Stop) Energy Absorbing Anchor Post Assembly for Concrete Roof Deck
J UFA55209(90)C	KStrong® IMPACT™ Low Profile 90° Corner Anchor Post Assembly for Concrete Roof Deck
K UFA55311C	KStrong® IMPACT™ Low Profile Intermediate Anchor Post Assembly for Concrete Roof Deck
UFA55411C	KStrong® IMPACT™ Low Profile Variable Bend (15° Max) Anchor Post Assembly for Concrete Roof Deck

## FEATURES

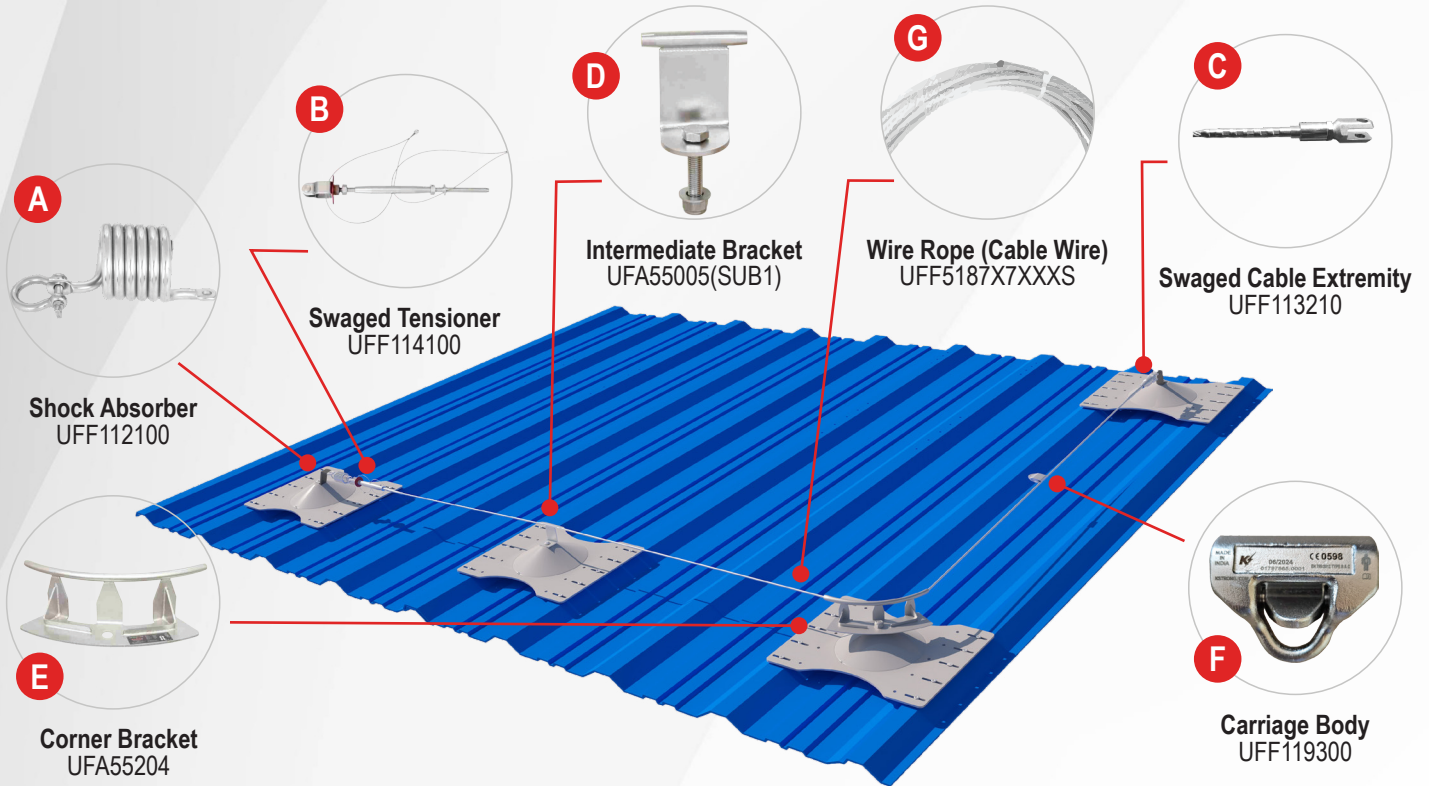
- Certified for up to 4 users
- Manufactured from 6061 T6 Aluminum and 316 Stainless Steel
- Suitable for Standing Seam, R-Panel, Built-Up Membrane and Concrete roof profiles
- 8mm wire cable thickness (grade 316)
- Suitable for both fall arrest and fall restraint
- Built-in shock absorber with tension indicator
- Passed system operating temperatures between -40°C to +60°C
- Uses water proof rivets and self drilling screws to attach the system base plates to the roof deck. Depending on the roof deck profile, the use of toggle bolts may be used.



# ROOF/FLOOR MOUNT APPLICATION IMPACT COMPONENTS



## METAL PANEL / R-PANEL ROOF DECK (LOW PROFILE)



Model	Description
A UFF112100	KStrong® IMPACT™ 12K Shock Absorber (Column / Wall, Overhead / Ceiling, and Roof Mount HLL Systems)
B UFF114100	KStrong® IMPACT™ Tensioner with Swaging
C UFF113210	KStrong® IMPACT™ Swaged Cable Termination
D UFF111510	KStrong® IMPACT™ Adjustable Intermediate Bracket (Column / Wall, Overhead / Ceiling, and Roof Mount HLL Systems)
D UFA55005(SUB1)	KStrong® IMPACT™ Intermediate Bracket for Use with all Low-Profile Base Plates (Standing Seam, Metal Panel / R-Panel, Built-Up TPO, and Concrete Roof Decks)
D UFA55311	KStrong® IMPACT™ Low Profile Intermediate Anchor Post Assembly for Metal Panel / R-Panel Roof Deck
E UFA55204(90)	KStrong® IMPACT™ 90° Intermediate Corner Bracket (Overhead / Ceiling and Roof Mount HLL Systems)
E UFA55204(135)	KStrong® IMPACT™ 135° Intermediate Corner Bracket (Overhead / Ceiling and Roof Mount HLL Systems)
E UFA55004(90)(SUB1)	KStrong® IMPACT™ 90° Corner Energy Absorbing Bracket for Use with all Low-Profile Base Plates (Standing Seam, Metal Panel / R-Panel, Built-Up TPO, and Concrete Roof Decks) and Overhead / Ceiling Anchors
E UFA55005(SUB1)(CB)	KStrong® IMPACT™ Variable Bend (15° Max) Intermediate Bracket for Use with all Low-Profile Base Plates (Standing Seam, Metal Panel / R-Panel, Built-Up TPO, and Concrete Roof Decks) and Overhead / Ceiling Anchors
E UFA55209(90)	KStrong® IMPACT™ Low Profile 90° Corner Anchor Post Assembly for Metal Panel / R-Panel Roof Deck
E UFA55411	KStrong® IMPACT™ Low Profile Variable Bend (15° Max) Anchor Post Assembly for Metal Panel / R-Panel Roof Deck
F UFF119300	KStrong® IMPACT™ Removable Shuttle (Column / Wall and Roof Mount HLL Systems ONLY)
G UFF5187X7XXXS	KStrong® 7x7 Wire Cable (Column / Wall, Overhead / Ceiling, and Roof Mount HLL Systems)
UFA55006(SUB1)	KStrong® IMPACT™ Extremity (Start/Stop) Energy Absorbing Bracket for all Roof Mount HLL Systems / Single Point Anchors
UFA55111	KStrong® IMPACT™ Low Profile Extremity (Start/Stop) Energy Absorbing Anchor Post Assembly for Metal Panel / R-Panel Roof Deck
UFF115101	KStrong® IMPACT™ HLL Inspection Plate
UFF111506	KStrong® IMPACT™ Repair Tube for HLL's Utilizing 8mm 7x19 Wire Cable (Optional)
UFA55002(SUB1)	KStrong® IMPACT™ Fastener Assembly for Low-Profile Base Plate (Standing Seam, Metal Panel / R-Panel, Built-Up TPO, and Concrete Roof Decks) or Overhead / Ceiling Anchor
UFFBULBRIV	KStrong® IMPACT™ Set of 8 quantity pop rivets for attachment of Base Plate for Metal Panel / R-Panel Roof Deck
UFA55001(SUB1)	KStrong® IMPACT™ Low-Profile Base Plate for Metal Panel / R-Panel Roof Deck

## WARRANTY & SERVICES

- All systems come with a warranty period of 12 months.
- All systems are thus further warrantied with 20 years provided they are inspected once annually according to the requirements of OSHA, ANSI and EN365.
- Competent Person Training on the Inspection, Use and Maintenance of any system will be provided along with Competent Person Certificate.
- Competent Person training on how to conduct periodic inspection will be provided.



## RECOMMENDED PPE

While working on a roof the user can select from a range of Strong fall protection PPE to work safely with either Lanyards, Rope lines or SRLs in conjunction with a Full Body Harness.



Energy Absorbing  
Lanyard  
UFL201101



6 ft. Micron™  
SRL UFS351102



Manual 3 ft. Shock  
Absorbing Rope Grab  
Assembly | UFG611020



White Polydac Rope  
UFR200025 | 25 ft.  
UFR200050 | 50 ft.



Full Body  
Roofers Harness  
UFH10201G





## FULL-SERVICE PROVIDER

KStrong is one of the world's largest Full-Service Providers of Fall Protection including Engineered Fall Protection System, Design, Installation and Training Services. With over 4000 employees worldwide and nearly 43 acres of production under roof, KStrong is well positioned to help your company protect its most valuable assets, its employees.

## CONTACT US

- ✉ [systems@kstrong.com](mailto:systems@kstrong.com)
- 🌐 [www.kstrong.com](http://www.kstrong.com)
- ☎ 1-833-KSTRONG (578-7664)

📍 **KStrong Inc.**  
**150 N. Radnor Chester Road**  
**Suite F200**  
**Radnor, PA 19087**

## PROUD MEMBER OF



AMERICAN SOCIETY OF  
SAFETY PROFESSIONALS