

**KSTRONG**<sup>®</sup>  
UNRIVALED SAFETY.

**CASE STUDY**  
**ASIA PULP & PAPER (APP) SINAR MAS**

**SAFETY LIFELINE FOR ROOF MAINTENANCE**

**IMPACT AFF4000 KLIP-LOK ROOF  
FIXED LIFELINE SYSTEM**

## PROJECT CASE STUDY

**Client** : Asia Pulp & Paper (APP) Sinar Mas  
**Project name** : Safety Lifeline For Roof Maintenance Activity  
**Products used** : Impact AFF4000 Klip-Lok Roof Fixed Lifeline System



SCAN TO DOWNLOAD  
CATALOGUE



### Background

Asia Pulp & Paper (APP) Sinar Mas is a manufacturing company that delivers quality products to meet the growing global demand for tissue, packaging and paper. APP Sinar Mas's products are marketed in more than 150 countries across six continents.

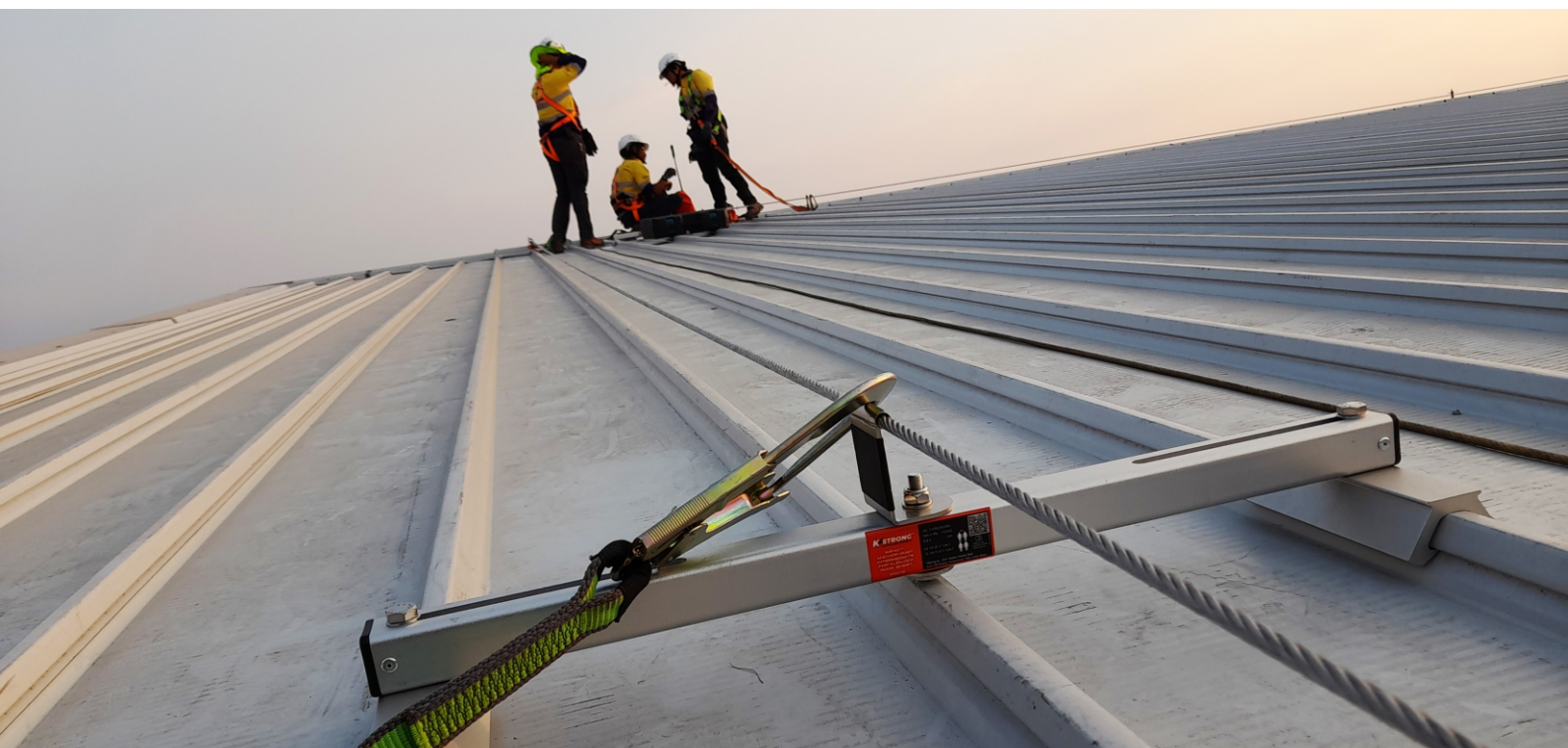
In collaboration with KStrong Asia, APP Sinar Mas examined the risks and improved the safety aspect of working-at-heights by providing an integrated fall protection lifeline for workers to prevent fall incidents when working on the roof of their cold storage building for roof maintenance activity.

They are committed to employee welfare, health and safety thus wanted to improve their safety standard by installing a permanent lifeline system on their roofs as part of their commitment to employee safety.

### Requirement

The roof profile used was a Klip-Lok system to avoid the necessity of any holes being made on the roofs metal sheets so as to prevent any water leakage as well as avoiding any affect to the roof warranty. The fixed lifeline system installed on the roof of the main building had to comply with EN795:2012 and CENTS 16415. KStrong recommended the use of our IMPACT AFF4000 lifeline system which is suitable to be installed on all type of Klip-Lok profiles which is 406 & 700.

The safety lifeline had to comply with international standards for anchors to respect their status as a multinational company that complies with the highest international safety standards, thus the installation was safely done according to the highest safety requirements and installed by a KStrong certified installer.



## KStrong Solution

---

KStrong offered the new ImpactAFF4000 Klip-Lok Fixed Lifeline System that can fit into Klip-Lok 406 & 700 as required. Note that the design took into consideration all the safety requirements that included minimizing swing falls on the edge of the roof. The Impact series has been certified by EN795:2012 type C anchor and CEN TS 16415 for multiple users. KStrong was chosen because of our competitive advantages in terms of product design, quality, value, and local support.

Additionally, KStrong used a local certified installer that has a trained, professional and competent installation team which meets the requirements of the client's safety standards.

## About KStrong

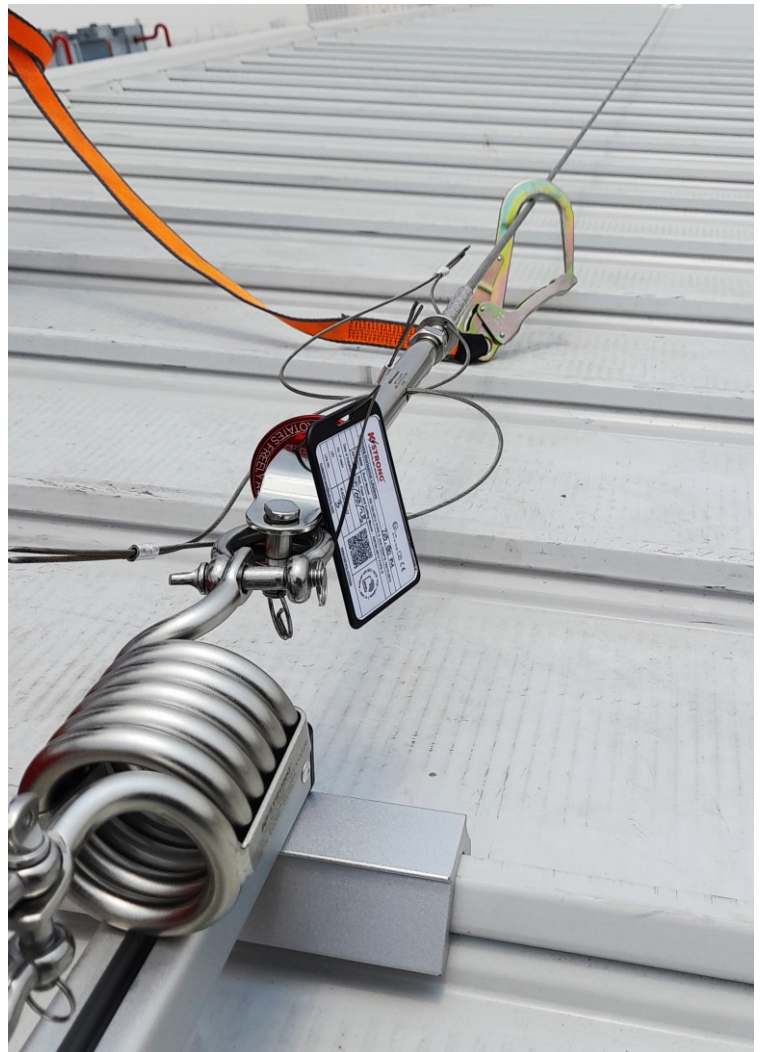
---

The founders of KStrong have been successfully manufacturing personal protective equipment globally for over 25 years. With the support of a large team of highly experienced research and product development specialists along with global manufacturing facilities, KStrong is poised to become the preeminent brand of choice for personal protective safety products. KStrong takes pride in assuring careful measures to ensure all products meet applicable government codes and professional standards, such as EN, AS/NZS and ANSI. We look forward to helping your company protect its most valued possession, its workers!



# Project Gallery

---





KStrong Asia Pacific  
Contact E-mail : [customercare@kstrong.com](mailto:customercare@kstrong.com)

[www.kstrong.com](http://www.kstrong.com)

---

USA

SOUTH AMERICA

ASIA

---