



---

USER INSTRUCTION MANUAL  
**BRUTE SEALED  
3 WAY RETRIEVALS**

THESE INSTRUCTIONS APPLY TO THE FOLLOWING MODELS:  
AFS570020R and AFS570030R

**CE 0598**

EN 360:2002  
& IP68 Level of IEC 60529  
EN 1496:2017 Class B  
Vibration Test IEC 60068-2-6:2007

Please read and understand the manufacturer's instructions for each component or part of the complete system. Manufacturer's instructions must be followed for proper use, care, and maintenance of this product. These instructions must be retained and be kept available for the user's reference at all times. Alterations or misuse of this product, or failure to follow instructions, may result in serious injury or death.

**Note:** The user is advised to keep this user instructions document for the life of the product.

KStrong Sealed Type 3 Rescue Retrievals blocks are classed as a Personal Protective Equipment (PPE) by the European PPE Regulation (EU) 2016/425 and has shown to comply with this Directive through the Harmonized European Standard EN 360:2002.

KStrong Sealed Type 3 Rescue Retrievals blocks also meet IP68 level of ingress protection as per IEC 60529. Hence, it is best suited for oil & gas industries and off shore areas.

The Blocks are designed to minimise the risk of/provide protection against the danger of falling from heights. However, always remember that no item of PPE can provide full protection and care must always be taken while carrying out the risk related activity.

#### 1. PERFORMANCE AND LIMITATIONS OF USE :

The equipment has been tested in accordance with EN 360:2002 and has achieved the following performance levels :

EN 360:2002 test	Result/Comment
Design & Ergonomics (Clause 4.1)	Achieves required performance as stated in EN 360:2002 (PASS). Lanyard free from sharp or excessively abrasive surface (PASS). No unnecessary features which add significantly to overall mass (PASS).
Materials & Construction (Clause 4.2)	Lanyard end terminated with a loop, for connection to harness and fall arrest system (PASS). Lanyard meets static strength requirement (PASS).
Locking after Conditioning (EN 364:1992) (Clause 4.3.1)	After conditioning, it locks & remains locked until released with 5 kg Max. (PASS)
Static Strength (EN 364:1992) (Clause 4.4)	15 kN sustained for 3 minutes without release for synthetic rope block (PASS).
Dynamic Performance (EN 364:1992) (Clause 4.5)	Arrest force <6.0kN, Arrest distance <2.0m (PASS).
Corrosion Resistance (EN 364:1992) (Clause 4.7)	Corrosion test in accordance with ISO 9227:1990-24 hours (PASS).

EN 1496:2017 test	Results
4.2 Ergonomics	Force applied to handle to lift 100Kg is 140N
4.3 Material & constructions	No sharp edges or burrs that could add additional risk to user
4.5 Dynamic Performance & function test for class B	100 Kg mass held, Peak Arrest force : >6.0 kN following Dynamic performance, 204Kg & 30Kg could be raised and lowered on lifting device. On release of handle the arrest distance : 0mm
4.6 Static strength	13.4kN sustained for 3 mins without failure
4.7 Corrosion Resistance	Corrosion test in accordance with ISO 9227:2012, 48 Hrs (Pass)

IEC 60529 test	Results
IP6X	When subjected inside a closed chamber with talcum powder 2kg per cubic meter of test chamber volume, no deposit of dust is observed inside the product at the end of test.
IPX8	When submerged under the water at a depth of 1 meter for 24hrs, no ingress of water is observed inside the product at the end of the test

#### Additional Certification & Testing:

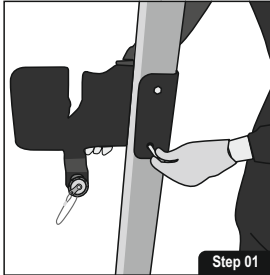
Vibration Test IEC 60068-2-6:2007

2. **USAGE:** Specifically for the most extreme environments. The heavy duty sealed design, corrosion resistant material used in the Block ensures the critical working components are kept free of dirt, grease, water, and chemicals. Ideally suited for Oil and Gas, Sewage Plants and all Offshore areas.

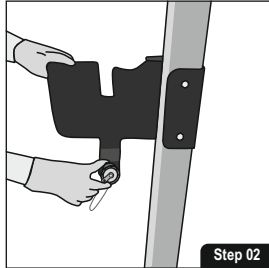
3. **HOW TO USE :**

**A: INSTALLATION**

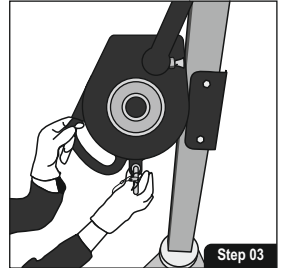
- STEP 1:** Install the appropriate bracket on Extreme Davit with help of two locking pins supplied with the bracket.
- STEP 2:** Mount the Retrieval Sealed Retractable Fall Arrester Block on the bracket by inserting the guided pulley of the Retrieval Sealed Retractable Fall Arrester Block into the Recess provided in the bracket.
- STEP 3:** Now insert the locking pin into the bush of the bracket and tight it to the fullest.
- STEP 4:** Reel out the lanyard and guide it through the pulley Extreme Davit and connect to the Dorsal D-Ring of the user's harness.



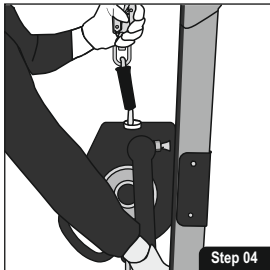
Step 01  
Fix the Mounting Bracket for installing the Rescue Retrieval Block.



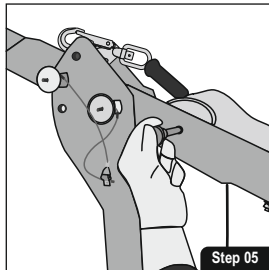
Step 02  
Release the knob of the Mounting Bracket to place the Block.



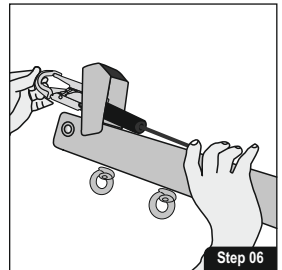
Step 03  
Once the Block is placed, tighten the knob to fix it.



Step 04  
Release the webbing of the Block to pass it along the Extreme Davit's Arm.



Step 05  
Unlock the pin of the pulley to pass along the Hook of the Block from the Extreme Davit's Arm & then insert the pin to lock it. Now the hook is ready to be used as an Attachment Point.



Step 06

**B. USAGE**

**Retractable Mode** - Pull the Push pin outside and push the handle downside to change the mode of the Retrieval Sealed Retractable Fall Arrester Block in Retractable mode.

**Rescue Mode** - After a fall been occurred by the retractable, pull the pin outside and allow the handle to move out to activate the Retrieval function.

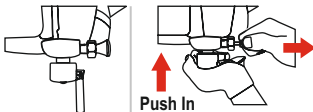
*The device comes with an additional hand-operated lowering function intended for lowering a person over a distance limited to 2mtr. & for a rescue by descent, a descender device confirming EN 341 should be used.*

**NOTE:** Check the Shaft that Green band comes out fully if not, rotate the handle and try to pull upside until the green band out fully. The victim can now be raised up and lowered down.

It is easy to shift to Winch mode from Block mode (& vice versa) following the given steps :

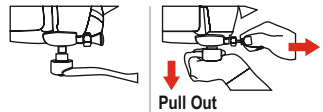
**Block Mode**

Pull the pin and push the handle to reverse in Block mode



**Winch Mode**

Pull the pin and handle to shift to Winch mode



**4. INSTRUCTIONS FOR SAFETY:**

- **Putting into service**
  - Ensure anchor point to which retractable block is being connected complies with EN 795:2012.
  - All connectors use for making connections must comply with EN 362:2004.
- **Use**
  - Harness in compliance with EN361 is the only recommended body holding device when used with retractable block.
  - Attach the life line of to the Dorsal D-ring of the harness
- **Training**
  - It is impertinent to get trained by authorized/ competent person for safe installation adjustment & usage.
- **Maintenance**
  - Cleaning of soil & dirt with cloth must be done at a safe area to avoid accumulation of static charge.
  - In case of any doubt arising about the safe condition of the product such as crack in the housing or any other metal part, hindered retractions, delayed / early locking fall indicator showing red mark, in such cases immediately remove from service & send it to authorized repair center.
  - Product is safe to use up to maximum temperature of 50C.
  - Maximum surface temperature of the device is 40C.
  - Any alteration & misuse of the product can lead to serious injury or death.

**5. SPECIFIC CONDITIONS FOR USE:**

- Please read the instructions supplied with the product before installing and using the product.
- Cleaning and maintenance shall be conducted in non- hazardous area.
- The product shall only be used by a person trained and a competent in its safe use.
- The product shall not be used outside its limitation for only purpose other than for which it is intended.

**6. WARNING:**

- Ensure the medical condition of the user does not affect his safety in normal and emergency use.
- The Retractable Fall Arrester with Retrieval System shall only be used by a person trained and competent in its safe use.
- A rescue plan shall be in place to deal with any emergencies that could arise during the work.
- Do not make any alterations or additions to the Retractable Fall Arrester with Retrieval System without the manufacturer's prior written consent and that any repair shall only be carried out by personnel trained by the manufacturer & duly authorized by him.
- The Retractable Fall Arrester shall not be used outside its limitation, or for any purpose other than that for which it is intended.
- The lifting / lowering function is for rescue purposes only and not for lifting / lowering loads.
- Do not lift the unit by handle strap.
- Regular periodic examination is required and the safety of users depends upon the continued efficiency and durability of the equipment.
- User must check for the legibility of product marking before each and every use.
- Do not use any Lubricant on Sealed Retractable Block.
- Periodic examination shall only be conducted by the manufacture or organization authorized by the manufacturer due to the complexity of the equipment.

**7. ADVICE & INFORMATION:**

- The Retractable Fall Arrester with Retrieval System should be the personnel property of the user.
- Ensure that the Retractable Fall Arrester with Retrieval System is compatible with other items when assembled into a system.
- Usage with other un-compatible items may be dangerous & hazardous as the safe function of one item may be affected or interferes with the safe function of another.
- The user should carry out a pre-use check of the Retractable Fall Arrester with Retrieval system, to ensure that it is in a serviceable condition and operates correctly before it is used.
- The pre use check shall involve checking of any wear or abrasion on wire ropes and sign of corrosion if any on metal parts or any breakage of the plastic/aluminum casing.
- Withdraw from use immediately if there is any doubt about its safe condition or if it has already arrested a fall, the equipment shall not be used again until confirmed in writing by a competent person that it is acceptable to do so.
- Ensure that the strength of the anchor device is greater than 12kN.
- Use karabiner conforming to EN 362 for connecting to the anchor points.
- It is advisable to use the dorsal attachment D-Ring of the harness for connection to the Retractable Fall Arrester with Retrieval System.

- However if it is not possible for any reason, the chest attachment element may also be used.
  - The component of complete system shall not be substituted.
  - Following conditions may be hazardous & may affect the performance of Retractable Fall Arrester:-
    - Extreme temperature.
    - Trailing or looping of Lanyards over sharp edges.
    - Extreme acidic or basic environments.
    - Abrasive or sharp edge structures which can damage the equipment.
    - Pendulum falls.
  - A full body harness is the only acceptable body holding device that can be used in a fall arrest system.
  - This is advised that Annual Inspection should be done by competent person strictly in accordance with manufacturers periodic examination procedure & if found any discrepancy in product service will be done at authorized service center only.
  - Periodic examination frequency shall be at least every 12 months.
  - Safety of users depend upon the continued efficiency and durability of the equipment.
  - It is essential to verify that a minimum 4ms height of free space is available below user's feet & the ground at the work place, so that in case of a fall, there will be no collision with the ground or other obstacle in the fall path.
  - The enclosure of the fall arrest block is made of Polyamide, cleaning and maintenance shall only be conducted in a safe area.
  - Ensure that manufacturer's packing is used during transportation to prevent damage. In case original packing is not available, use polybag which is sealed to prevent moisture.
  - If used properly, the Retractable Fall Arrester with Retrieval System has a life of 10 years from the date of manufacture unless subjected to severe abrasions or extreme temperature/climatic condition.
  - It is essential for the safety of the user that if the product is resold outside the original country of destination, the reseller shall provide instruction for use, for maintenance, for periodic examination and for repair in the language of the country in which product in to be used.
  - There should be direct or indirect visual contact or some other means of communication of the victim with the rescuer at all times during the rescue process.
- 8. INSTRUCTION FOR MAINTENANCE** Follow the maintenance instructions procedure laid below strictly.
- In case of minor soiling, wipe the equipment with cotton cloth or soft brush. Do not use any abrasive material.
  - For intensive cleaning wash in water at a temperature between 25°C to 50°C using a neutral detergent. It should be allowed to dry by itself and be kept away from open fire or any other source of heat.
  - Store in cool dry place, preferably away from moisture, direct sunlight, extra acidic or basic conditions & sharp edges.
  - Product is safe to use up to maximum temperature of 50°C.
  - Maximum surface temperature of the device is 40°C.

9. Label:

AFS570020R



MANUFACTURER IDENTIFICATION : KStrong Unrivaled Safety  
 PRODUCT TYPE : Brute Sealed 3 Way Retrievals  
 PRODUCT REF. NO. : AFS570020R  
 MAXIMUM LIFTING DISTANCE : 20M  
 UID. : Sample  
 MONTH & YR OF MRF. : XXYYYY

1. Read the instructions before use.
2. The CE mark showing that the product meets the requirements of the PPE Regulation (EU)2016/425.
3. Atex Certification
4. Do not use this block at foot level application.
5. Use between temperature range of -30C to +50C.
6. Once the wire rope has been reeled out, do not leave it suddenly to retract inside on its own, let it go inside gradually by guiding it slowly inside.
7. To be used by a person weighing up to 140 kgs.
8. Ensure that the anchorage point has strength of min 12kN.
9. Ensure that wire rope has no cuts or abrasion marks before use.
10. Ensure that the max angle between the vertical & the lanyard is 40°.
11. Do not attempt repair unless trained by the manufacturer.
12. Do not use for horizontal applications.
13. Connect the lanyard to the Dorsal attachment element of your harness.

AFS570030R



**10. MARKING EXPLANATION:**

Retractable Fall Arrester is marked with:

- (i) Identification of the manufacturer
- (ii) Type of product
- (iii) Product Ref. No.
- (iv) Wire Rope Length
- (v) UID Number
- (vi) Month & Year of Manufacture

**11. ICON EXPLANATION:**



Ensure that the anchorage point has strength of min 12kN.



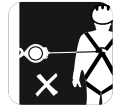
Ensure that the max angle between the vertical & the lanyard is 40°.



Ensure that wire rope has no cuts or abrasion marks before use.



Once the wire rope has been reeled out, do not leave it suddenly to retract inside on its own, let it go inside gradually by guiding it slowly inside.



Do not use for horizontal applications.



Connect the lanyard to the Dorsal attachment element of your harness.



Use between temperature range of -30C to +50C.



To be used by person weighing upto 140 kgs.



Do not attempt repair unless trained by the manufacturer.



Do not use this block at foot level application.

**LIFESPAN:** The estimated product Lifespan is 10 years from the date of manufacture. The following factors can reduce the Lifespan of the product: intense use, contact with chemical substances, specially aggressive environments, extreme temperature exposure, UV exposure, abrasions, cuts, violent impacts, bad use or maintenance.

**DISCLAIMER:** Prior to use, the end user must read and understand the manufacturer's instructions supplied with this product at the time of shipment and seek training from their employer's trained personnel on the proper usage of the product. Manufacturer is not liable or responsible for any loss, damage or injury caused or incurred by any person on grounds of improper usage or installation of this product.

<b>EQUIPMENT RECORD</b>				
Product				
Model & type/identification		Trade Name		Identification number
Manufacturer		Address		Tel, email into use
Year of manufacture		Purchase Date		Date first put into use
Other relevant information (eg. document number)				
<b>PERIODIC EXAMINATION AND REPAIR HISTORY</b>				
Date	Reason for entry (periodic examination or repair)	Defects noted, repairs carried out and other relevant information	Name and signature of competent person	Periodic examination next due date

**Certification Body :**

SATRA Technology Europe Ltd, Bracetown Business Park, Clonee, Dublin D15 YN2P Ireland (Notified Body 2777)

**Ongoing Assessment Body:**

SGS Fimko Oy, Takomotie 8, FI-00380 Helsinki, Finland (Notified Body 0598)

For EU Declaration, please visit <https://kstrong.com/asia/eu-declaration-form/>



KStrong Inc.  
150 N. Radnor Chester Road Suite F200  
Radnor, Pennsylvania 19087 United States  
Contact number : 1-833-KSTRONG

[www.kstrong.com](http://www.kstrong.com)

USA	South America	ASIA
-----	---------------	------