

CURVED ALUMINUM RAIL FOR CEILING AND FLOOR MOUNTING FOR AFF5000 SYSTEM

AFF531030

Features

- The Curved Rail can be mounted on the Ceiling or and Floor allowing the AFF539000 trolley to travel along the rail section attached to a corner.
- Secured together with other sections of the AFF5000 Horizontal Rail sections with AFF533000 Junction bolt, ensuring alignment of the sections which allows the AFF539000 Vertical Trolley to move along the rail smoothly.
- Attached directly to the Ceiling and floor with AFF533700 Mounting Bracket.

How To Use

Refer to User Instruction Manual



Metal Components

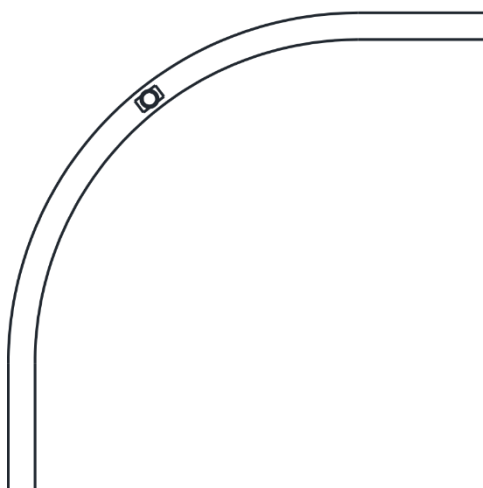
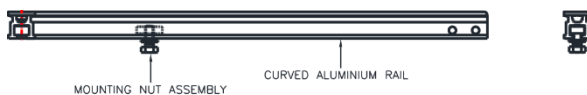
Aluminum Rail : 6005 T6 Aluminum: Anodized

Weight

1.38 kg ± 0.10 kg

Relevant Standards

Part of AFF5000 System which Conforms to EN795:2012 TYPE D
ATEX directive 2014/34/UE



CE 0598