

# UNIVERSAL EXTREMITY STAINLESS STEEL POST FOR CLAMPING BEAM FLANGE C/W FISHER PLATE

AFA935831(SS)

## Features

- Extremity Post designed to be fixed on metal I BEAM at the end of a horizontal lifeline.
- The base has an adjustable opening to adopt to the type of Beam section.
- Compatible with Universal Extremity Plate AFF113710 & Intermediate AFF111510
- Available lengths (L):
  - 300 mm AFF935831(SS)(300)
  - 500 mm AFF935831(SS)(500)
  - 750 mm AFF935831(SS)(750)

## How To Use

Refer to User Instruction Manual



## Metal Components

Post and Plates	:	316 Stainless Steel: Polished
Bolts	:	316 Stainless Steel
System Strength	:	15 kN

## Flange Width

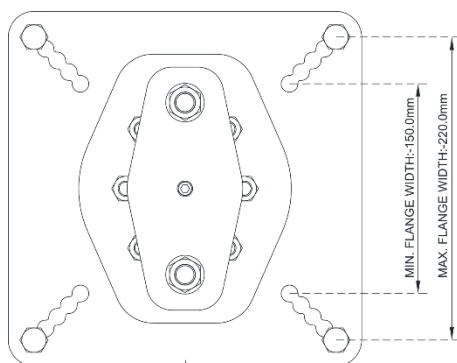
Minimum Flange Width Compatibility	:	150.0 mm
Maximum Flange Width Compatibility	:	220.0 mm

## Weight

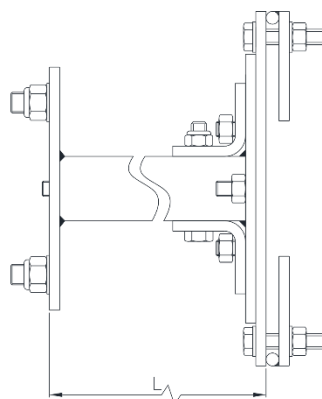
300 mm	:	12.15 kg ± 0.10 kg
500 mm	:	12.97 kg ± 0.10 kg
750 mm	:	15.15 kg ± 0.10 kg

## Relevant Standards

Conforms to EN 795:2012 Type A



ANCHOR BASE



CE 0598