



---

USER INSTRUCTION MANUAL  
**STAINLESS STEEL POINT ANCHOR**

THESE INSTRUCTIONS APPLY TO THE FOLLOWING MODELS:

AFA935515, AFA935515(75) and AFA935508



II 2G  
Ex h IIc T6 Gb  
EN 80079-36:2016  
EN 80079-37:2016

EN 795:2012 TYPE A

Please read and understand the manufacturer's instructions for each component or part of the complete system. Manufacturer's instructions must be followed for proper use, care, and maintenance of this product. These instructions must be retained and be kept available for the user's reference at all times. Alterations or misuse of this product, or failure to follow instructions, may result in serious injury or death.

**Note:** The user is advised to keep this user instructions document for the life of the product.

- 1. INTRODUCTION:** The ANCHORS are classed as a Personal Protective Equipment (PPE) by the European PPE Regulation (EU)2016/425 and have been shown to comply with this Regulation through the Harmonized European Standard EN 795:2012 Type A.

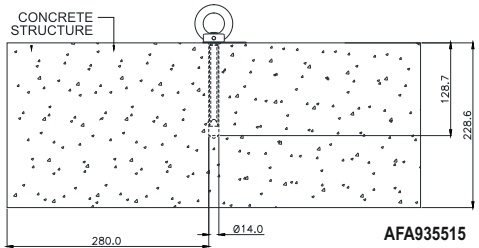
This Anchor is designed to minimize the risk of/provide protection against the danger of falling from heights. However, always remember that no item of PPE can provide full protection and care must always be taken while carrying out the risk related activity.

- 2. PERFORMANCE AND LIMITATIONS OF USE:**

The Anchor has been tested in accordance with EN 795:2012 Type A and has achieved the following performance levels:

EN 795:2012 Type A test	Result/Comment
General Requirements for Anchor devices (Clause 4.2)	(PASS) No sharp edges (PASS).
Static Strength (Clause 4.4.1.3)	Sustained a force of 12 kN for 3 minutes (PASS).
Dynamic Strength & Integrity Test (Clause 4.4.1.2)	When tested with rigid steel mass of 100 kg, the test mass held after test with the device remaining stable throughout. (PASS) Anchor Holds an increased load of 300kg for 3 min following dynamic test.
Corrosion Resistance (Clause 4.7)	No corrosion evident after 48 hours of salt spray testing. (PASS)

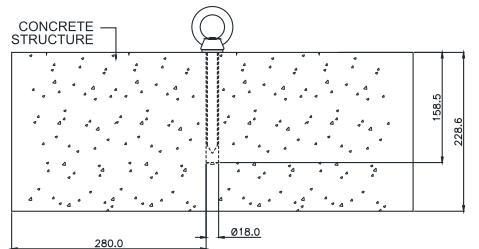
- 3. APPLICATION:** This Anchor is designed for fastening into concrete. The anchorage eye is used as an anchorage point for fall protection equipment.
- 4. INSPECTION:** A formal inspection of fall protection products/components must be performed preferably every six months or at least annually by a competent person other than the user. The frequency of formal inspections should be based on conditions of use or exposure. Record the inspection results in the inspection and maintenance log at the end of this manual. The component should be checked for Cut, Frayed, Heavily Soiled, welding burns etc. Metal parts like D-rings should be duly check for the crack, bent, deformities, corrosion etc.



- 5. PRECAUTIONS:**
  - Ensure the Medical condition of the user does not affect his safety in normal and emergency use.
  - Ensure that the Anchor is installed directly above the user's head.
  - Ensure that the equipment is compatible with other items when assembled into a system.

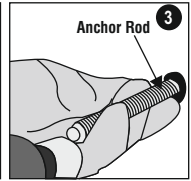
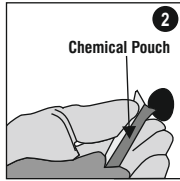
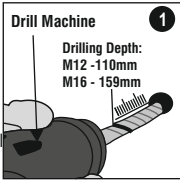
- 6. INSTRUCTIONS FOR INSTALLATION OF STEEL POINT ANCHOR (AFA935515 and AFA935508):**

Follow below steps for Installation of Steel Point Anchor (AFA935515 and AFA935508) or refer to Hilti Installation guide for Chemical fasteners.

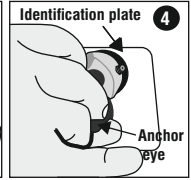
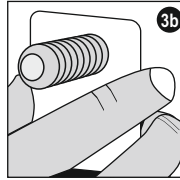
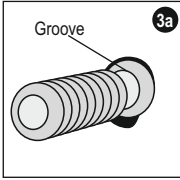


AFA935508

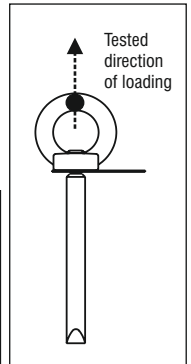
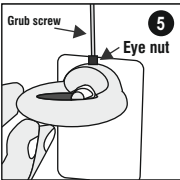
**STEP 1:** Make a drill of Ø14.0mm, depth 110mm on the concrete section for AFA935515 (M12) and for AFA935508(M16) make a drill of Ø18.0mm, depth 159mm. Clean the hole immediately before setting the anchor, remove drilling dust and standing water from the base of the hole by blowing out well with at least 4 strokes of the blow out pump, or using compressed air or an industrial vacuum cleaner, the anchor hole must be free of dust, water, ice, oil, bitumen, chemicals or any other foreign matter or contaminates.



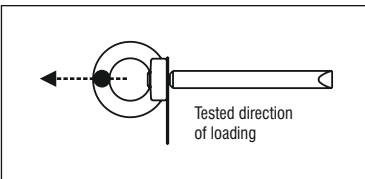
**STEP 2:** Check that the hole is drilled to the correct depth before setting the anchor. Hole depth is correct when the anchor rod contact the base of the hole and setting depth mark coincides with the concrete surface. Now push the chemical pouch into the drilled hole.



**STEP 3:** Use the setting tool to drive the anchor rod into the hole applying moderate pressure, stop the setting tool when the setting depth is reached and the leave it for minimum 30 minutes to get the chemical cured.



Ensure that the stud is pushed inside, so that the edge of groove provided is stud flushed on the face of the structure. And similarly, the identification plate should be seated on the groove and flushed over the surface. Please refer image 3(a), (b).

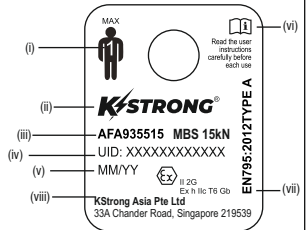


**STEP 4:** Insert the identification plate and tighten the anchor eye.

**STEP 5:** Tighten the Grub screw to secure lock the eye nut. Now the anchor is ready for use.

7. **ANCHORAGE STRENGTH :** Ensure that the structure on to which the anchor is fitted is strong enough to withstand a load of 12 kN. If unsure of structure strength, refer to an engineer.
8. **COMPATIBILITY:** To optimise protection, in some instance it may be necessary to use the steel anchor with suitable ppe such as boots/gloves/helmet/ear defenders. In this case, before carrying out the risk-related activity, consult your supplier to ensure that all your protective products are compatible and suitable for your application.
9. **LIMITATIONS:**
  - Anchors should be the personal property of its user.
  - It should not be used in highly acid or basic environments.
  - The anchor has been tested to EN 795:2012 and is appropriate only for single person use with an energy absorber as per EN 355:2002.
10. **REPAIR:** If the product becomes damaged, it will NOT provide the optimum level of protection, and therefore should be immediately removed from service. Never use the damaged product. Repair is permitted, provided that it is either done by the manufacturer or a competent repair centre or individual approved by the manufacturer.
11. **WITHDRAWAL FROM USE:** If the system has been used to arrest a fall, it should be removed from service and returned to the manufacturer or a competent repair centre for servicing and re test.
12. **CLEANING AND MAINTENANCE:** In case of minor soiling, wipe the anchor with cotton cloth or a soft brush. Do not use any abrasive material. For intensive cleaning wash the anchor in water at a temperature between 30°C to 60°C by using a neutral detergent (pH+ 7). The washing temperature should not exceed 60°C. Do not use acid or basic detergents.

**MARKING**



**The Anchor is marked with :**

- (i) For 1 user only.
- (ii) Identification of the manufacturer
- (iii) Type or product code
- (iv) UID for traceability
- (v) Manufacturing Date
- (vi) Read the user instructions before use.
- (vii) Norm Reference.
- (viii) Manufacturer's Address

**13. STORAGE AND TRANSPORT :** When not in use, store the anchor away from heavily acidic or basic environment. Never place heavy items on top of it. Also ensure that it is stored away from chemically hazardous environment preferably storage should be in dry environment.

**14. WARNING:**

- Do not make any alterations or additions to the equipment without the manufacturer's prior written consent and that any repair shall only be carried out by personnel trained by the manufacturer & duly authorized by him.
- The equipment shall not be used outside its limitation, or for any purpose other than that for which it is intended.
- It is essential for safety of the user that equipment is immediately withdrawn from use should it have been used to arrest a fall. Do not use the product until confirmed in writing by a competent person that it is acceptable to do so.

**LIFESPAN:** The estimated product Lifespan is 10 years from the date of manufacture. The following factors can reduce the Lifespan of the product: intense use, contact with chemical substances, specially aggressive environments, extreme temperature exposure, UV exposure, abrasions, cuts, violent impacts, bad use or maintenance.

**DISCLAIMER:** Prior to use, the end user must read and understand the manufacturer's instructions supplied with this product at the time of shipment and seek training from their employer's trained personnel on the proper usage of the product. Manufacturer is not liable or responsible for any loss, damage or injury caused or incurred by any person on grounds of improper usage or installation of this product.

EQUIPMENT RECORD				
Product				
Model & type/identification		Trade Name		Identification number
Manufacturer		Address		Tel, email into use
Year of manufacture		Purchase Date		Date first put into use
Other relevant information (eg. document number)				
PERIODIC EXAMINATION AND REPAIR HISTORY				
Date	Reason for entry (periodic examination or repair)	Defects noted, repairs carried out and other relevant information	Name and signature of competent person	Periodic examination next due date

**Certification Body:**

SATRA Technology Centre, Wyndham Way, Telford Way, Kettering, NN16 8SD, UK (Notified Body 0321)

For EU Declaration, please visit <https://kstrong.com/asia/eu-declaration-form/>



**KStrong Asia Pte Ltd**

33A Chander Road, Singapore 219539  
Contact Email: [customercare@kstrong.com](mailto:customercare@kstrong.com)

[www.kstrong.com](http://www.kstrong.com)

USA	South America	Asia
-----	---------------	------