



USER INSTRUCTION MANUAL
PURLIN ANCHOR FOR METAL ROOF
STRUCTURES

THESE INSTRUCTIONS APPLY TO THE FOLLOWING MODEL:

AFA935501, AFA935502, AFA935503, AFA935504,
AFA935505, AFA935506 and AFA935507

CERTIFIED PRODUCT



AUSTRALIA & NZ STANDARDS
Certified to AS/NZS 5532:2013
Issued by BSI
Vide Lic. No.: BMP 760374

EN 795:2012 Type A

Please read and understand the manufacturer's instructions for each component or part of the complete system. Manufacturer's instructions must be followed for proper use, care, and maintenance of this product. These instructions must be retained and be kept available for the user's reference at all times. Alterations or misuse of this product, or failure to follow instructions, may result in serious injury or death.

Note: The user is advised to keep this user instructions document for the life of the product.

"To be used in accordance with manufacturer's instructions"

- 1. INTRODUCTION-** The Purlin Anchors are in compliance with European Standard EN 795:2012 Type A for one user. These anchors are Quick and Easy to install and these anchors are designed to be installed on all type of roof. These anchors deploys in the event of fall to absorb the energy hence leaves the roof panel intact to maintain architectural integrity.
- 2. PERFORMANCE AND LIMITATIONS OF USE:** The Purlin Anchors have been tested in accordance with EN 795:2012 Type A & AS/NZS 5532:2013 have achieved the following performance levels-

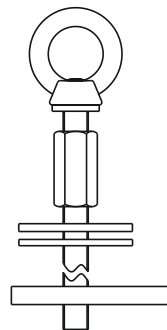
EN 795:2012 Type A test	Result/Comment
General Requirements for Anchor devices (Clause 4.1)	(PASS) No sharp edges (PASS).
Static Strength (Clause 4.4.2.3)	Sustained a force of 15 kN for 3 minutes (PASS).
Dynamic Strength & Integrity Test (Clause 4.4.1.2)	When tested with rigid steel mass of 100 kg, the test mass held after test with the device remaining stable throughout. (PASS). Anchor Holds an increased load of 300kg for 3 min following dynamic test.
Corrosion Resistance (Clause 4.2.2.1)	No corrosion evident after 48 hours of salt spray testing. (PASS)
AS/NZS 5532:2013 test	Result/Comment
Static Strength (Clause 5.3)	Sustained a force of 15 kN for 3 minutes (PASS).
Dynamic Performance (Clause 5.3)	When tested with rigid steel mass of 100 kg, the test mass held after test with the device remaining stable throughout. (PASS)

3. INSTRUCTIONS FOR INSTALLATION:

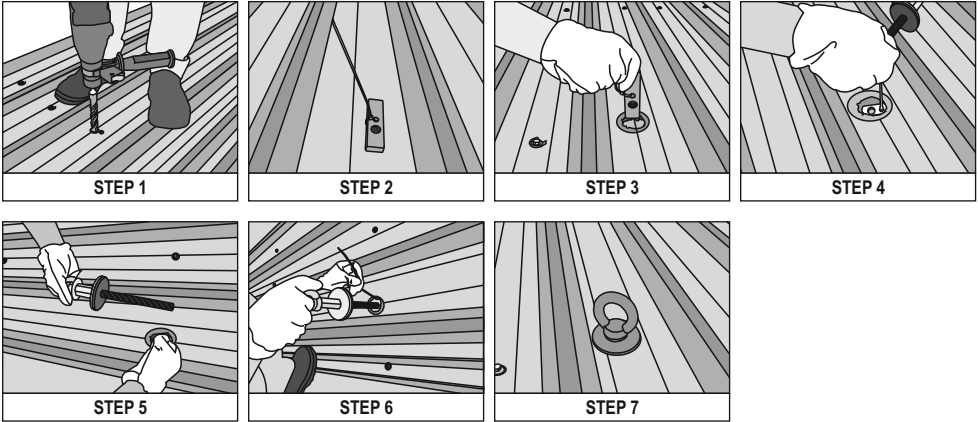
- For AFA935501, AFA935502, AFA935503, AFA935504, AFA935505, AFA935506, AFA935507, AFA935506 AND AFA935507

Anchor is to be installed directly on the purlin in the following way –

- STEP 1-** Drill a hole of Ø 30mm on the roof through purlin.
- STEP 2** Fix the cable tie in the hole adjacent to the Ø16mm hole on the flat plate.
- STEP 3** Insert the Flat plate in Ø30mm hole, ensuring that bigger hole of plate enters first. Once inserted completely, pull the cable tie upward to flush the flat plate against the purlin.
- STEP 4** Match the hole of plate with that of Purlin.
- STEP 5** Put the metal washer followed by rubber washer in the stud and fix the stud in the thread of flat plate.
- STEP 6** Once the 2/3rd part of thread has been locked, remove cable tie.
- STEP 7** Tight stud to the fullest. Eye of the device is now ready to be used as anchor point.

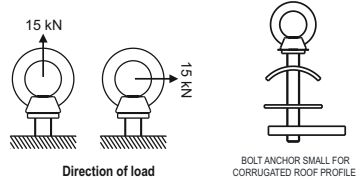


AFA935501



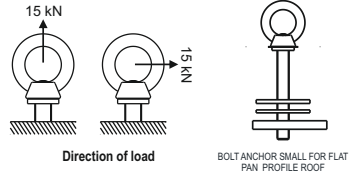
Purlin Anchor small for Corrugated Roof Profile (AFA935502)

Bolt anchor design to be fixed on purlins of corrugated roof profile to create permanent anchor.



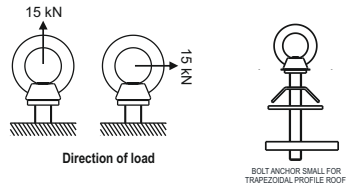
Purlin Anchor small for Flat Pan Roof Profile (AFA935503)

Bolt anchor design to be fixed on purlins of corrugated roof profile to create permanent anchor.



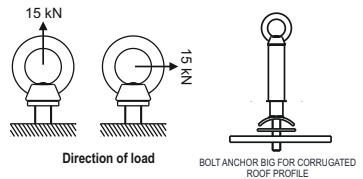
Purlin Anchor small for Trapezoidal Roof Profile (AFA935504)

Bolt anchor design to be fixed on purlins of corrugated roof profile to create permanent anchor.



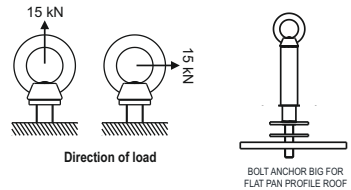
Purlin Anchor Big for Corrugated Roof Profile (AFA935505)

Bolt anchor design to be fixed on purlins of corrugated roof profile to create permanent anchor.



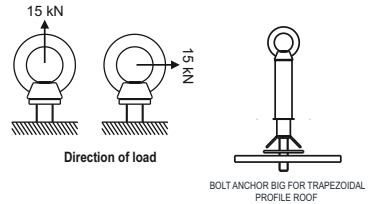
**Purlin Anchor Big for Flat Pan Profile Roof
(AFA935506)**

Bolt anchor design to be fixed on purlins of corrugated roof profile to create permanent anchor.



**Purlin Anchor Big for Trapezoidal Profile Roof
(AFA935507)**

Bolt anchor design to be fixed on purlins of corrugated roof profile to create permanent anchor.



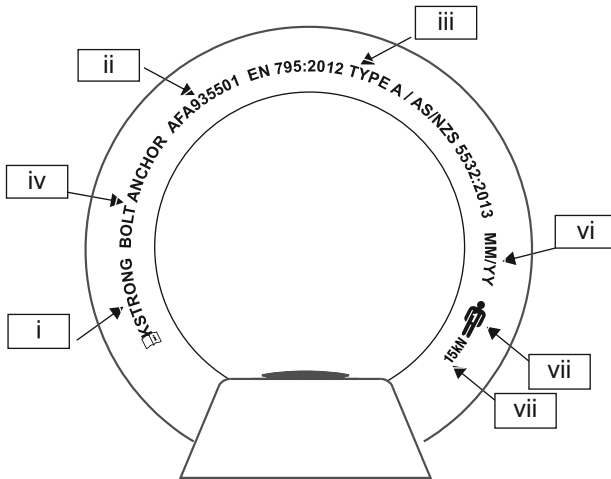
4. ADVICE & INFORMATION:

- It should not be used in highly acid or basic environments.
- This anchor has been tested to AS/NZS 5532:2013 and is appropriate only for single person use with an energy absorber as per EN 355:2002 that is rated to user mass up to 100kg.
- Ensure that the structure on to which the anchor is fitted is strong enough to with stand a load of 20 kN.
- Ensure that the anchor is installed directly above the user's head.
- Ensure that the equipment is compatible with other items when assembled into a system.
- It is essential to verify the free space required beneath the user at work place before each occasion of use so that in case of a fall there will be no collision with ground or other obstacle in the fall path.
- It is essential for the safety of user that if the product is resold outside the original country of destination, the reseller shall provide instruction for use, maintenance, for periodic examination and for repair in the language of the country in which product in to be used.
- Anchor device should only be used for personal fall protection equipment and not for lifting equipment.

5. WARNING:

- Ensure the Medical condition of the user does not affect his safety in normal and emergency use.
- The equipment shall only be used by a person trained and competent in its safe use.
- A rescue plan shall be in place to deal with any emergencies that could arise during the work.
- Do not make any alteration or additions to the equipment without the manufacturer's prior written consent and repair shall only be carried out by personnel trained by the manufacture & duly authorized by him.
- The equipment shall not be used out side its limitation, or for any purpose other than that for which it is intended.

6. **INSPECTION:** Visually inspect the system before each use to ensure that it is in a serviceable condition and is operating correctly. If during inspection, doubts are raised about the safety of the system or a component, these should be replaced either by the manufacturer or a competent person.
7. **COMPATIBILITY:** To optimise protection, in some instance it may be necessary to use the anchor with suitable ppe such as boots/ gloves/ helmet/ear defenders. In this case, before carrying out the risk-related activity, consult your supplier to ensure that all your protective products are compatible and suitable for your application.
8. **STORAGE AND TRANSPORT:** When not in use, store the anchor in a well-ventilated area away from heavily acidic or basic environment. Never place heavy items on top of it. Also ensure that it is stored away from chemically hazardous environment preferably storage should be in dry environment.
9. **REPAIR:** If the product becomes damaged, it will NOT provide the optimum level of protection, and therefore should be immediately removed from service. Never use the damaged product. Repair is permitted, provided that it is either done by the manufacturer or a competent repair centre or individual approved by the manufacturer.
10. **CLEANING:** In case of minor soiling, wipe the anchor with cotton cloth or a soft brush. Do not use any abrasive material. For intensive cleaning wash the anchor in water at a temperature between 30C to 60C by using a neutral detergent (pH 7). The washing temperature should not exceed 60C. Do not use acid or basic detergents.
11. **WITHDRAWAL FROM USE:** If the system has been used to arrest a fall, it should be removed from service and returned to the manufacturer or a competent repair centre for servicing and re test.

Marking-

*AFA935501, AFA935502, AFA935503, AFA935504, AFA935505, AFA935506, AFA935507

The anchor post is marked with:

- i) Identification of manufacturer.
- ii) Type of product code.
- iii) Norm Reference.
- iv) Product description
- v) Read the instruction before use.
- vi) Batch Number
- vii) For Single User Only
- (viii) Load Rating

LIFESPAN: The estimated product Lifespan is 10 years from the date of manufacture. The following factors can reduce the Lifespan of the product: intense use, contact with chemical substances, specially aggressive environments, extreme temperature exposure, UV exposure, abrasions, cuts, violent impacts, bad use or maintenance.

DISCLAIMER: Prior to use, the end user must read and understand the manufacturer's instructions supplied with this product at the time of shipment and seek training from their employer's trained personnel on the proper usage of the product. Manufacturer is not liable or responsible for any loss, damage or injury caused or incurred by any person on grounds of improper usage or installation of this product.

EQUIPMENT RECORD				
Product				
Model & type/identification		Trade Name	Identification number	
Manufacturer		Address	Tel, email into use	
Year of manufacture		Purchase Date	Date first put into use	
Other relevant information (eg. document number)				
PERIODIC EXAMINATION AND REPAIR HISTORY				
Date	Reason for entry (periodic examination or repair)	Defects noted, repairs carried out and other relevant information	Name and signature of competent person	Periodic examination next due date

Certification Body:

SATRA Technology Centre Kettering, Northants, UK (Notified Body 0321)

Certification Body & Ongoing Assessment Body (AUSTRALIA & NZ STANDARDS)

BSI Group ANZ Pty Ltd, Suite 1, Level 1, 54 Waterloo Road, Ongoing Assessment Body
Macquarie Park, NSW 2113, Australia.

For EU Declaration, please visit <https://kstrong.com/asia/eu-declaration-form/>



KStrong Asia Pte Ltd

33A Chander Road, Singapore 219539
Contact Email: customercare@kstrong.com

www.kstrong.com

USA

South America

ASIA
