



USER INSTRUCTION MANUAL
IRSQ SEIZE'M RESCUE KIT

THESE INSTRUCTIONS APPLY TO THE FOLLOWING MODEL:

AFX209001

Please read and understand the manufacturer's instructions for each component or part of the complete system. Manufacturer's instructions must be followed for proper use, care, and maintenance of this product. These instructions must be retained and be kept available for the user's reference at all times. Alterations or misuse of this product, or failure to follow instructions, may result in serious injury or death.

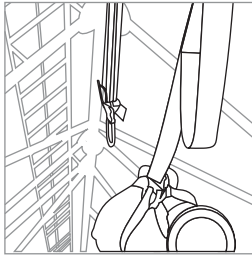
Note: The user is advised to keep this user instructions document for the life of the product.

- 1. INTRODUCTION:** Kstrong introduces the IRSQ RESCUE KIT specifically designed to be used to rescue a casualty who is currently suspended by a fall arrest lanyard or Fall arrest Block. The Rescuer can raise the casualty to release their current attachment so they can be raised or lowered to safety without the need for the rescuer to access the casualty.

The Kit comes complete with a Aluminium Double Pulleys, Steel Karabiners, 50m of Kernmantle Rope, Grip Descender, Rope Clamp, Telescopic Pole with Aluminium Rebar Hook, Anchorage Webbing Slings & Kit Back Bag.

The IRSQ RESCUE KIT is to provide a rescue kit that will enable a rescuer to:

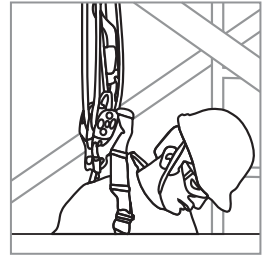
Attach a casualty who is suspended by a fall arrest lanyards.



Raise the casualty in order to release their current attachment.



Raise or lower the casualty to a point of safety.



The above capabilities are all achievable without the need for the rescuer to access the casualty.

To carry out this, the rescuer must be able to access the point at which the casualty has anchored their lanyard. The control feature of the rescue kit locks automatically if released.

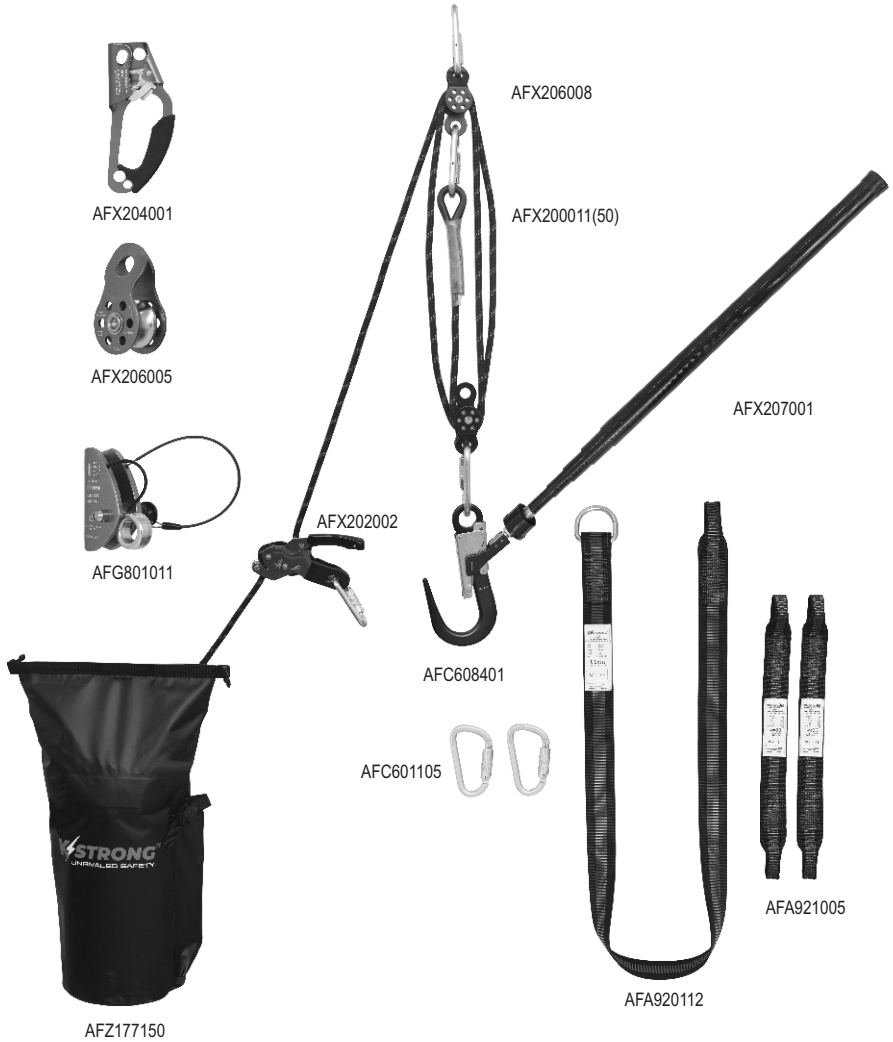
The IRSQ RESCUE KIT can be used in two different modes depending upon whether the anchor point is at the rescuer's foot level or above (being 1.5 m above to have any material effect).

If the anchor is at foot level, then the system will not be able to raise the casualty sufficiently to bring them back to their start point. The casualty must be raised to release their lanyard, then lowered to the ground if there is no obstruction. To help the rescuer to raise the casualty, the kit has been designed with a mechanical advantage of (4:1).

If the anchor is 1.5 m above foot level, preferably at head height it will be possible to raise the casualty to their start point. Again the rescuer is able to use their weight to assist in the operation with the help of the mechanical advantage of (4:1).

2. PRODUCT DESCRIPTION:

Product Codes	Description	Qty
AFX204001	Ascender Handle (Right)	1
AFX202002	Self braking Descender	1
AFX206008	SS. Double Mini Aluminum Pulley c/w double attachment	2
AFG801011	Aluminum Rope Grab for Inertia Reels	1
AFX200011(50)	11mm Semi Static Kernmantle	50m
AFA921005	Webbing 50mm Cross Arm Strap 0.5m	2
AFA920112	Cross Arm Anchor Strap c/w D ring & Loop at other	1
AFC601105	Steel Quarter Turn Karabiner	6
AFX207001	3m Rescue Pole	1
AFC608401	Aluminum Scaffold Hook 60mm Opening	1
AFZ177150	Rescue Bag	1
AFG801011	Rope Grab	1



3. INSTALLATION & USER INSTRUCTIONS:

Rescuers must ensure their own safety and always follow the correct working at heights procedures before commencing a rescue.

High Anchor Point: Anchorage more than 1.5 m above the foot level.

1. Reach exactly above Access casualty's anchorage point.



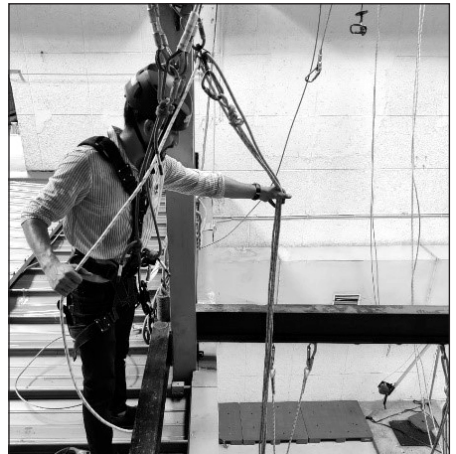
2. Attach the anchor sling to a suitable anchor point above the casualty.



3. Remove the 4:1 preassembled kit from the bag, Attach the Double aluminium pulley system to the anchor.



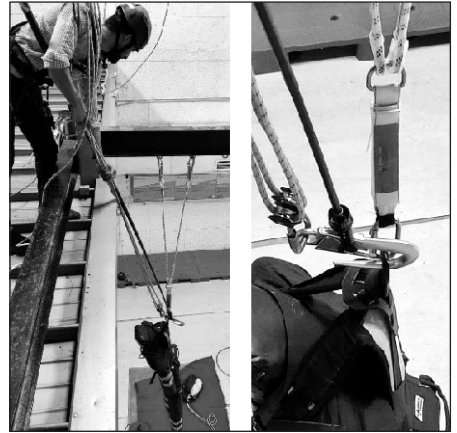
4. Attach the Scaffold hook to the end of the pole.



5. Adjust pole & pulley to the required length.



6. Connect the Descender to the rope and attach to the rescuer's chest D ring.



7. Connect Hook to casualty's connection point



8. Once Scaffold Hook is attached to the casualty's attachment on the harness, pull and remove the pole from the Scaffold Hook.



9. Pull rope slack back through the descender until rope is tight from the casualty's weight. Now Rescuer squats downwards pulling rope through descender and raises casualty to Disconnect casualty from anchor point.



10. Once the casualty's weight has been transferred to the rescue kit, then their lanyard can be disconnected.



11. The casualty can now be lowered at a controlled speed to the ground or a point of safety if there is no obstructions. If obstructions are below then the casualty can be raised to the rescuer.

- **Low Anchor Point (foot level)**

1. Access casualty's anchorage point.
2. Attach the anchor sling to a suitable anchor point at foot level.
3. Remove the 4:1 preassembled kit from the bag
4. Attach the Double aluminium pulley system to the anchor point.
5. Attach the Scaffold hook to the end of the pole.
6. Adjust pole to the required length.
7. Adjust ropes in-between the pulleys to the same length as the pole.
8. Connect the Descender to the rope and attach to the rescuer's chest D ring.
9. Pull rope through the Descender to create downward slack for pulleys and hook.
10. Reel back the Hook and open Hook to connect to the telescopic pole.
11. Connect Hook to casualty's connection point.
12. Once Scaffold Hook is attached to the casualty's attachment on the harness, pull and remove the pole from the Scaffold Hook.
13. Pull rope slack back through the descender until rope is tight from the casualty's weight.
14. Rescuer now squats downwards pulling rope through descender and raises casualty to Disconnect casualty from anchor point.
15. Once the casualty's weight has been transferred to the rescue kit, then their lanyard can be disconnected.
16. The casualty can now be lowered at a controlled speed to the ground or a point of safety if there are no obstructions. If obstructions are below then the casualty can be raised to the rescuer.

4. INSPECTION AND EXAMINATION:

Keep these instructions, or a copy with the IRSQ RESCUE KIT to aid future inspection, and examination.

The equipment must be given a visual and tactile inspection when delivered to site/works, and before every use. We recommend recorded inspection by a competent person every 6 months.

Particular attention should be paid to the following:

- **Hardware & Rope:**

Inspect for signs of damage/distortion/corrosion, and correct operation & locking of connectors. Examine for any signs of wear/abrasion, including inter strand wear, unravelling, extension and fusion.

Local abrasion as distinct from general wear may be caused by the passage of the rope over sharp edges or protrusions while under tension and may cause serious loss of strength. Slight damage to outer fibres and occasional yarn may be considered harmless but any reduction in diameter of the rope or serious distortion to the sheath pattern should lead to rejection.

All Personal Protective Equipment should be immediately removed from service after being subjected to any shock or if there is any doubt about its condition.

5. CLEANING: The IRSQ RESCUE KIT may be cleaned if required. The following procedure must be adhered to:

- Use a mild detergent with hand hot water.
- Use a cloth, or sponge to wipe the SEIZE'EM RESCUE KIT and avoid over wetting.
- This procedure should then be repeated with clean water to rinse,
- Then allow drying naturally away from any direct heat source. If you require more information, please contact KStrong Asia.

6. TRANSPORTATION: All equipment should be stored and transported with the following precautions:

- Prevent contact with sharp objects.
- Keep away from harmful substances.
- Keep in a cool dry place free from direct sunlight.

LIFESPAN: The estimated product Lifespan is 10 years from the date of manufacture. The following factors can reduce the Lifespan of the product: intense use, contact with chemical substances, specially aggressive environments, extreme temperature exposure, UV exposure, abrasions, cuts, violent impacts, bad use or maintenance.

DISCLAIMER: Prior to use, the end user must read and understand the manufacturer's instructions supplied with this product at the time of shipment and seek training from their employer's trained personnel on the proper usage of the product. Manufacturer is not liable or responsible for any loss, damage or injury caused or incurred by any person on grounds of improper usage or installation of this product.

EQUIPMENT RECORD				
Product				
Model & type/Identification		Trade Name		Identification number
Manufacturer		Address		Tel, email into use
Year of manufacture		Purchase Date		Date first put into use
Other relevant information (eg. document number)				
PERIODIC EXAMINATION AND REPAIR HISTORY				
Date	Reason for entry (periodic examination or repair)	Defects noted, repairs carried out and other relevant information	Name and signature of competent person	Periodic examination next due date

For EU Declaration, please visit <https://kstrong.com/asia/eu-declaration-form/>



KStrong Australia Pty Ltd
 Unit 4-5 20 Lathe Place, Unanderra, New South Wales, Australia 2526
 Contact Email: customercare@kstrong.com.au

www.kstrong.com

USA	South America	Asia	Australia	New Zealand
KS GROUP				

AKS-AFX201051-121022-V2