

KSTRONG[®]
UNRIVALED SAFETY.

CASE STUDY
PT YAMAHA MOTOR
PARTS MANUFACTURING
INDONESIA

ROOF LIFELINE SYSTEM FOR SOLAR MAINTENANCE

AFF4000 IMPACT LIFELINE SYSTEM

PROJECT CASE STUDY

SCAN TO VIEW
PRODUCT



Client : PT Yamaha Motor Parts Manufacturing Indonesia
Project name : Roof Lifeline System for Solar Maintenance
Products used : AFF4000 IMPACT Kliplok and Standing Seam

Background

In line with their commitment to safety, health, and environmental sustainability, Yamaha is making strides to reduce their environmental impact by installing PV solar panels on all major buildings at their factory. This transition from fossil fuels to renewable energy reflects Yamaha's dedication to minimizing environmental harm. However, the installation of these solar panels has increased the need for work at height, as maintenance teams are now required to clean and inspect the panels. Recognizing the heightened fall hazards associated with this activity, and in line with their strong safety commitment, Yamaha engaged KStrong to assess the area and provide a Horizontal Lifeline solution for the roof.

Requirement

The horizontal lifeline needed to cover the entire area where all solar PV maintenance takes place, including safe access to the roof. It was essential that the lifeline comply with international standards, which had to be demonstrated through valid certifications. Additionally, the installation team was required to be certified according to local standards and equipped with properly certified work-at-height PPE.



KStrong Solution

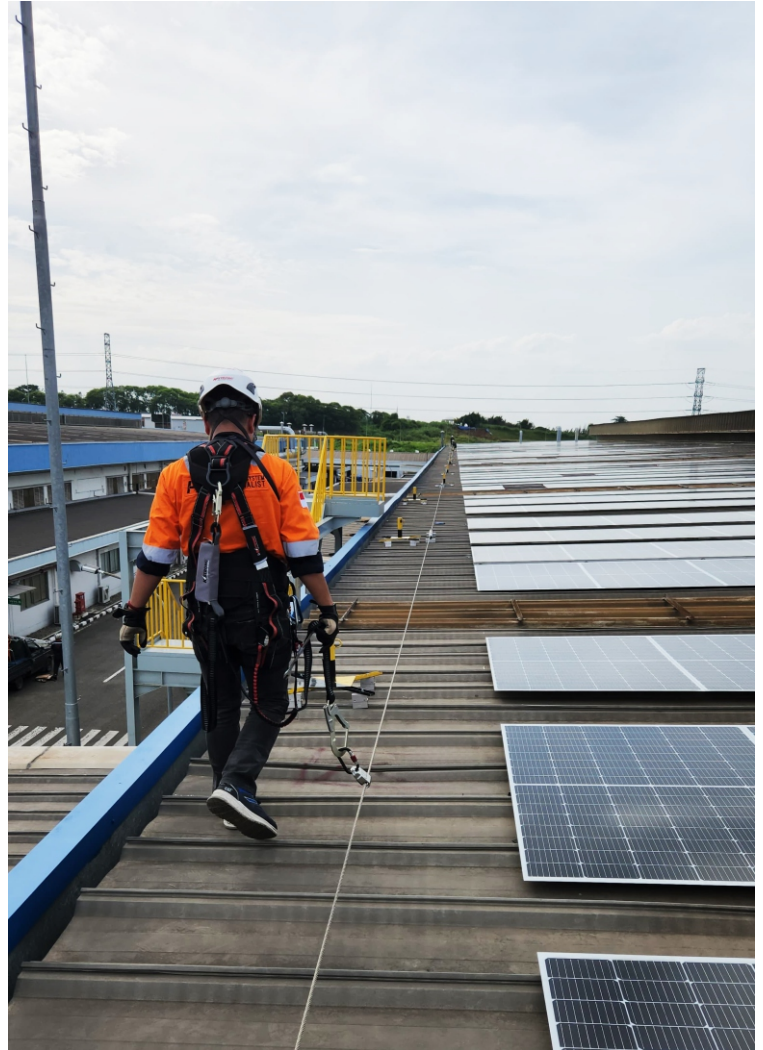
Following discussions on both technical and commercial aspects, Yamaha selected KStrong to install the IMPACT Roof Horizontal Lifeline System series. Due to the factory having two different roof profiles—Kliplok and Standing Seam—two types of IMPACT Roof Lifelines were required. During the installation, the certified KStrong team, equipped with the appropriate certified work-at-height equipment and PPE, utilized their extensive experience in installing such systems on solar roofs. After the installation, KStrong provided comprehensive training on the use and maintenance of the systems, as part of their after-sales and installation services.

About KStrong

The founders of KStrong have been successfully manufacturing personal protective equipment globally for over 20 years. With the support of a large team of highly experienced research and product development specialists along with global manufacturing facilities, KStrong is poised to become the preeminent brand of choice for personal protective safety products. KStrong takes pride in assuring careful measures to ensure all products meet applicable government codes and professional standards, such as EN, AS/NZS and ANSI. We look forward to helping your company protect its most valued possession, its workers!



Project Gallery





KStrong Asia Pacific
Contact E-mail : customercare@kstrong.com

www.kstrong.com

USA

SOUTH AMERICA

ASIA
