



USER INSTRUCTION MANUAL
IRSQ ROPE CLAMPS

THESE INSTRUCTIONS APPLY TO THE FOLLOWING MODELS:

AFX204002 and AFX204001

CE 0598
EN 567:2013

Please read and understand the manufacturer's instructions for each component or part of the complete system. Manufacturer's instructions must be followed for proper use, care, and maintenance of this product. These instructions must be retained and be kept available for the user's reference at all times. Alterations or misuse of this product, or failure to follow instructions, may result in serious injury or death.

Note: The user is advised to keep this user instructions document for the life of the product.

- 1. INTRODUCTION:** The IRSQ Ascenders are classed as Personal Protective Equipment (PPE) by the European PPE Regulation EU 2016/425 and have been shown to comply with this Regulation through the Harmonized European Standard EN 567:2013.

These Ascenders are designed to minimize the risk of/provide protection against the danger of falling from heights. However, always remember that no item of PPE can provide full protection and care must always be taken while carrying out the risk related activity.

- 2. TECHNICAL SPECIFICATION:**

| Ref. | Material | Weight | Works on | Finish | Certified to |
|------------------------|--------------------|----------|---|--------------------|--------------|
| AFX204002 AFX204001 | Aluminium Alloy | 195.0gms | 10.0mm to 12.0mm dia Kernmantle Rope | Coloured, Anodized | EN 567:2013 |

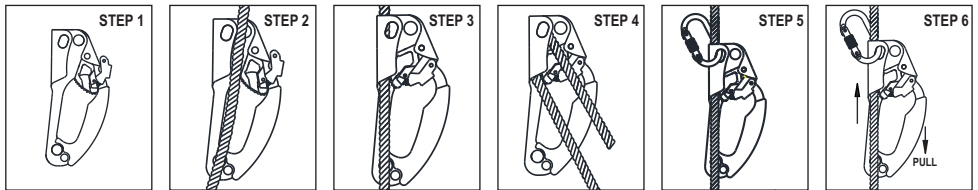
- 3. PERFORMANCE AND LIMITATIONS OF USE:** These Ascenders have been tested in accordance with EN 567:2013 and have achieved the following performance levels as laid down in the norm.

| EN 567:2013 test | Result/Comment |
|-------------------------------------|--|
| Design & Ergonomics (Clause 4.1) | Achieves required performance as stated in EN 567:2013 (Pass) Lock onto rope and accessory cord of diameter between 10 mm & 12 mm(Pass) Ascenders lock automatically when tension is applied in the 'downward' direction. Rope allowed to slip freely when force is applied to the rope clamp in the upward direction (Pass) No visual evidence of significant damage to ropes or cords following strength testing (Pass) Minimum width of handle opening=32 mm (Pass) |
| Static Strength (EN 567:2013) | Testing using 10 mm rope: Reference "AFX204002 subjected to 4kN applied 5 times in succession without visual evidence of damage to device or rope. Testing using 12 mm rope: Reference "AFX204001 subjected to 4kN applied 5 times in succession without visual evidence of damage to device or rope. |
| Pushing Test | Maximum rope diameter: 12mm No damage occurred to rope or rope clamp after 400N force is applied. Minimum rope diameter : 10mm No damage occurred to rope or rope clamp after 400N force is applied. |
| Pulling Test | Maximum rope diameter : 12mm No damage occurred to rope on rope clamp after 2000N force is applied. Minimum rope diameter : 10mm No damage occurred to rope or rope clamp after 2000N force is applied |

4. **POSSIBLE USAGE - AFX204002 & AFX204001:** Rope Clamp is ideal to use during ascent and occasionally for hauling.
Use of Ascender is feasible only in combination with other parts of the total equipment needed. Therefore, check carefully whether the products is compatible with other parts/components of the said equipment. Each of the components constituting the system ought to have the relevant CE certification.
5. **INSPECTION :** Visually inspect the system before each use to ensure that it is in a serviceable condition and is operating correctly. If during inspection, doubts are raised about the safety of the system or a component, these should be replaced either by the manufacturer or a competent person. Also check for the legibility of the markings on the product.
6. **PRECAUTIONS:**
- Ensure the Medical condition of the user does not affect his safety in normal and emergency use.
 - The equipment shall only be used by a person trained and competent in its safe use.
 - A rescue plan shall be in place to deal with any emergencies that could arise during the work.
 - It is essential to verify the free space required beneath the user at work place before each occasion of use so that in case of a fall there will be no collision with ground or other obstacle in the fall path.

7. **HOW TO USE:**

• **AFX204002 & AFX204001**



Pull the spring lever down and then towards outside with the help of your thumb.

Put the Kernmantle rope of the dia 10-12 mm inside the empty space left after opening of the spring lever.

Now from the outside direction press the spring lever down with the help of your thumb, it will automatically lock the rope.

Now check that ropes locked safely with the spring lever and there are no chances of slippage downwards.

Now put a Karabiner is the two holes adjacent to the rope. It will ensure that the rope dose not slip out of the ascender.

Before starting the ascent from the ground level, always check the ascender handle by pulling it towards yourself and ensure that the clamp locks on the rope when pulled downwards & slides upwards freely on the rope.

8. **ANCHORAGE STRENGTH :** Ensure that the structure on to which the anchor is fitted is strong enough to withstand a minimum load of 12kN.
9. **LIMITATIONS:**
- It should be the personal property of its user.
 - It should not be used in highly acid or basic environments.
 - This equipment shall not be used outside its limitation, or for any purpose other than that for which it is intended.
 - The ascender has been tested to EN 567:2013 and is appropriate only for single person use with an energy absorber as per EN 355:2002.
 - Ensure that the equipment is compatible with other items when assembled into a system.
 - It is essential for the safety of user that if the product is resold outside the original country of destination, the reseller shall provided instruction for use, for maintenance, for periodic examination and for repair in the language of the country in which product in to be used.
 - Do not exceed the limits of this equipment!. KStrong cannot be held liable for any accident, whether direct or indirect, resulting from a usage other than that provided for in this guide.

10. **COMPATIBILITY:** To optimize protection, in some instance it may be necessary to use the anchor with suitable PPE such as: boots/ gloves/ helmet and ear protection. In this case, before carrying out the risk-related activity, consult your supplier to ensure that all your protective products are compatible and suitable for your application.
11. **REPAIR:** If the product becomes damaged, it will NOT provide the optimum level of protection, and therefore should be immediately removed from service. It needs to be inspected to see if it is replaced or repaired. Never use the damaged product. Repair is only permitted by the manufacturer or a nominated repair centre or individual approved by the manufacturer
12. **WITHDRAWAL FROM USE :** If the system has been used to arrest a fall, it should be removed from service and returned to the manufacturer or a competent repair centre for servicing and retest.
13. **CLEANING & MAINTENANCE:** In case of minor soiling, wipe the anchor with cotton cloth or a soft brush. Do not use any abrasive material. For intensive cleaning wash the anchor in water at a temperature between 30°C to 60°C by using a neutral detergent (pH 7). The washing temperature should not exceed 60°C. Do not use acidic or basic detergents.
14. **STORAGE AND TRANSPORT:** When not in use, store the anchor in a well-ventilated area away from heavily acidic or basic environment. Never place heavy items on top of it. Also ensure that it is stored away from chemically hazardous environment. Preferably storage should be in dry environment.
15. **WARNING:**
 - Do not make any alterations or additions to the equipment without the manufacturer's prior written consent and that any repair shall only be carried out by personnel trained by the manufacturer & duly authorized by him.
 - The equipment shall not be used outside its limitation, or for any purpose other than that for which it is intended.
 - An inappropriate use can cause serious and even fatal accidents.
 - Regular periodic examinations must be carried out at a frequency of 12 months. And the Periodic examinations are to be carried out by a trained and competent person and strictly in accordance with the manufacturer's procedure.
 - The Safety of the user depends upon continued efficiency and durability of the equipment.

| MARKING | |
|--|--|
|  |  |
| FOR ROPE :Ø10~12MM | |
|  0598 | EN 567:2013  |
| The Ascender is marked with : | |
| (i) Type or product code | |
| (ii) The CE mark showing that the product meets the requirements of the PPE Regulation (EU) 2016/425 | |
| (iii) Minimum breaking load | |
| (iv) Identification of the manufacturer | |
| (v) EN Norms to which it complies | |

LIFESPAN: The estimated product Lifespan is 10 years from the date of manufacture. The following factors can reduce the Lifespan of the product: intense use, contact with chemical substances, specially aggressive environments, extreme temperature exposure, UV exposure, abrasions, cuts, violent impacts, bad use or maintenance.

DISCLAIMER: Prior to use, the end user must read and understand the manufacturer's instructions supplied with this product at the time of shipment and seek training from their employer's trained personnel on the proper usage of the product. Manufacturer is not liable or responsible for any loss, damage or injury caused or incurred by any person on grounds of improper usage or installation of this product.

| EQUIPMENT RECORD | | | | |
|--|---|---|---|---------------------------------------|
| Product | | | | |
| Model & type/Identification | | Trade Name | | Identification number |
| Manufacturer | | Address | | Tel, email into use |
| Year of manufacture | | Purchase Date | | Date first put into use |
| Other relevant information (eg. document number) | | | | |
| PERIODIC EXAMINATION AND REPAIR HISTORY | | | | |
| Date | Reason for entry (periodic examination or repair) | Defects noted, repairs carried out and other relevant information | Name and signature of competent person | Periodic examination next due date |
| | | | | |
| | | | | |
| | | | | |
| | | | | |
| | | | | |
| | | | | |
| | | | | |
| | | | | |
| | | | | |
| | | | | |

Certification Body:

SATRA Technology Europe Ltd, Bracetown Business Park, Clonee, Dublin D15 YN2P Ireland (Notified Body 2777)

Ongoing Assessment Body:

SGS Fimko Oy, Takomotie 8, FI-00380 Helsinki, Finland (Notified Body 0598)

For EU Declaration, please visit <https://kstrong.com/asia/eu-declaration-form/>



KStrong Australia Pty Ltd

Unit 4-5 20 Lathe Place, Unanderra, New South Wales, Australia 2526

Contact Email: customercare@kstrong.com.au

www.kstrong.com

USA South America Asia Australia New Zealand

KS GROUP
