

KSTRONG[®]
UNRIVALED SAFETY.



BRUTE
SERIES

USER INSTRUCTION MANUAL
RETRACTABLE FALL ARRESTERS
WITH RETRIEVAL SYSTEM

THESE INSTRUCTIONS APPLY TO THE FOLLOWING MODEL:
AFS510020R AND AFS510030R

CE 0598

EN 360:2002,
EN 1496:2017 CLASS B



II 2G
Ex h IIc T6 Gb
EN 80079-36:2016
EN 80079-37:2016

Please read and understand the manufacturer's instructions for each component or part of the complete system. Manufacturer's instructions must be followed for proper use, care, and maintenance of this product. These instructions must be retained and be kept available for the user's reference at all times. Alterations or misuse of this product, or failure to follow instructions, may result in serious injury or death.

Note: The user is advised to keep this user instructions document for the life of the product.

The Brute Retractable Fall Arrester with Retrieval System is classed as a Personal Protective Equipment (PPE) by the European PPE Regulation (EU)2016/425 and has been shown to comply with this Regulation through the Harmonized African Standard EN 360:2002 and EN 1496:2017 class B.

This Retractable Fall Arrester with Retrieval System is designed to minimise the risk of/provide protection against the danger of falling from heights. **However, always remember that no item of PPE can provide full protection and care must always be taken while carrying out the risk related activity.**

1. PERFORMANCE AND LIMITATIONS OF USE:

The equipment has been tested in accordance with EN 360:2002 and EN 1496:2017 Class B has achieved the following performance levels :

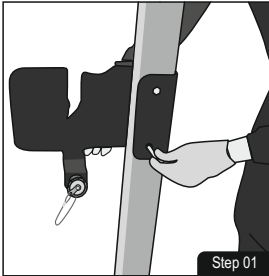
EN 360:2002 test	Result/Comment
Clause 4.1 Design & Ergonomics	Achieves required performance as stated in EN 360:2002 (PASS). Lanyard free from sharp or excessively abrasive surface (PASS). No unnecessary features which add significantly to overall mass (PASS).
Clause 4.2 Materials & Construction	Lanyard end terminated with a loop, for connection to harness and fall arrest system (PASS). Lanyard meets static strength requirement (PASS).
Clause 4.3.1 Locking after Conditioning (EN 364:1992)	After conditioning, it locks & remains locked until released with 5 kg Max. (PASS)
Clause 4.4 Static Strength (EN 364:1992)	15 kN sustained for 3 minutes without release for synthetic rope block (PASS).
Clause 4.5 Dynamic Performance (EN 364:1992)	Arrest force <6.0kN, Arrest distance <2.0m (PASS).
Clause 4.7 Corrosion Resistance (EN 364:1992)	Corrosion test in accordance with ISO 9227:1990-24 hours (PASS).
EN 1496:2017 test	Result/Comment
4.2 Ergonomics	Force applied to handle to lift 136Kg is 140N
4.3 Material & constructions	No sharp edges or burrs that could add additional risk to user
4.5 Dynamic Performance & function test for class B	136 Kg mass held, Peak Arrest force : >6.0 kN following Dynamic performance, 204Kg & 30Kg could be raised and lowered on lifting device. On release of handle the arrest distance : 0mm
4.6 Static strength	13.4kN sustained for 3 mins without failure
4.7 Corrosion Resistance	Corrosion test in accordance with ISO 9227:2012, 48 Hrs (Pass)

2. POSSIBLE USAGE :

- The Retractable Block with Rescue Retrieval System is coupled with Rescue Winch to enable easy retrieval of a victim of a fall.
- The Locking Pin on the side of the casing at the base of the handle allows this dual system to work in independent Fall Arrest & Rescue Mode modes.
- It can be easily mounted on the leg of KStrong Tripods AFT710007/ AFT710010, Extreme Davit AFT7500 and Davits using specialized brackets.
- Retrieval Type fall Arrest Block AFS510020R & AFS510030R conforms to EN 360:2002 and EN 1496:2017 Class B

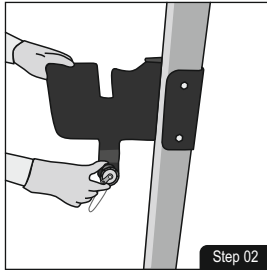
3. HOW TO USE :

INSTRUCTIONS FOR INSTALLATION OF RESCUE RETRIEVAL BLOCK (AFS510020/RAFS510030) ON EXTREME DAVIT (AFT7500)



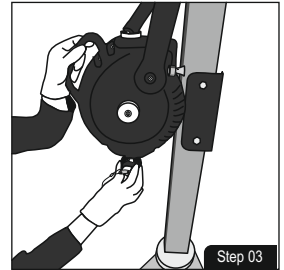
Step 01

Fix the Mounting Bracket for installing the Rescue Retrieval Block.
(AFT7500B20 for AFS510020R & AFT7500B30 for AFS510030R)



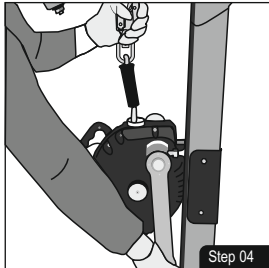
Step 02

Release the knob of the Mounting Bracket to place the Block.



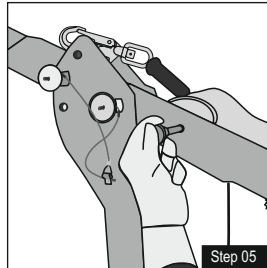
Step 03

Once the Block is placed, tighten the knob to fix it.



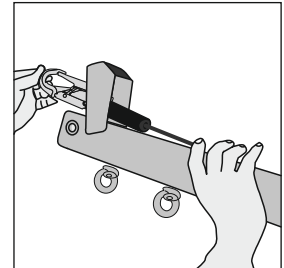
Step 04

Release the webbing of the Block to pass it along the Extreme Davit's Arm.

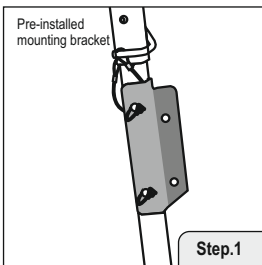


Step 05

Unlock the pin of the pulley to pass along the Hook of the Block from the Extreme Davit's Arm & then insert the pin to lock it. Now the hook is ready to be used as an Attachment Point.

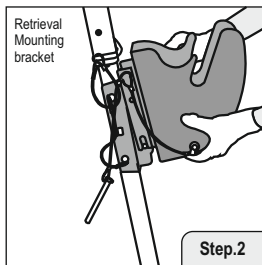


10. INSTALLATION OF RETRIEVAL BLOCK (AFS510020R/AFS510030R) ON TRIPOD (AFT710007/AFT710010)



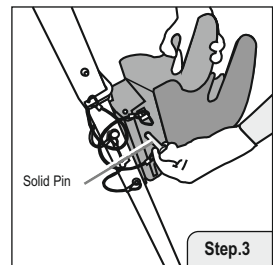
Step.1

Locate the tripod leg that has pre-installed mounting bracket for installing the retrieval block.

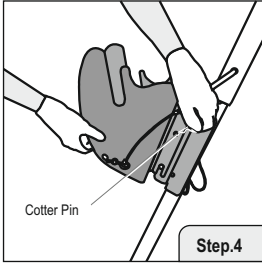


Step.2

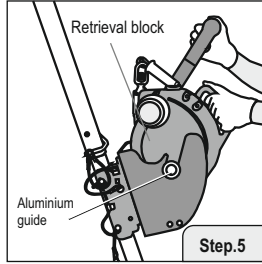
Place the retrieval mounting bracket on the lower mounting bracket pre-installed on the tripod leg and insert the guiding pin into the slot.



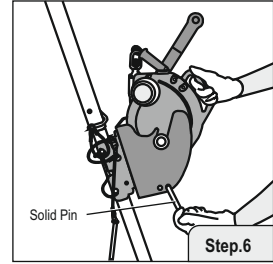
Step.3



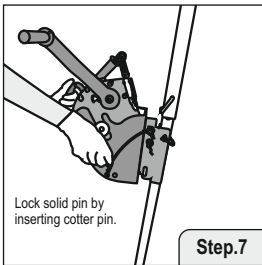
Use solid pin for locking the Retrieval Mounting bracket on pre-installed mounting bracket of tripod leg. Lock the solid pin on mounting brackets using cotter pin.



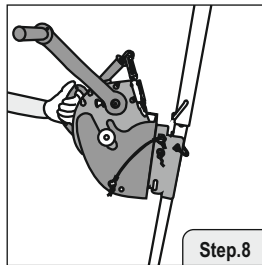
Insert retrieval block in bracket guided by aluminum guide provided on both side of retrieval.



Lock the anchorage eye with bracket followed by solid pin.



lock solid pin from other end by inserting cotter pin.

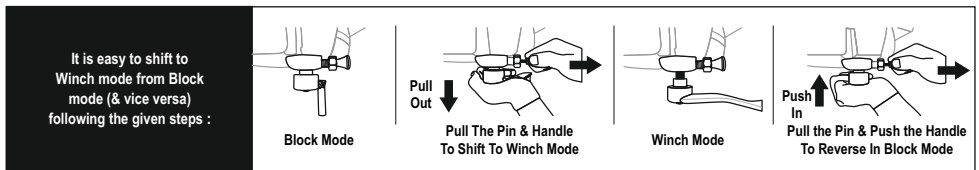


Now the retrieval block is ready to be used on tripod.

B. Usage : Retractable Mode - Pull the Push pin out side and push the handle downside to change the mode of AFS510020R & AFS510030R in Retractable mode.

Rescue Mode - After a fall been arrested by the retractable, pull the pin outside and allow the handle to move out to activate the Retrieval function. *The device comes with an additional hand-operated lowering function intended for lowering a person over a distance limited to 2 meter for a rescue by descent, a descender device conforming to EN 341 should be used.*

NOTE: Check the Shaft that Green band comes out fully if not, rotate the handle and try to pull upside until the green band is out fully. The victim can now be raised up and lowered down.



It is easy to shift to Winch mode from Block mode (& vice versa) following the given steps :

4. INSTRUCTIONS FOR SAFETY:

- **Putting into service :**
 - Ensure anchor point to which retractable block is being connected complies to EN 795: 2012.
 - All connectors used for making connections must comply with EN 362:2004.
- **Use :**
 - Harness in compliance with EN361 is the only recommended body holding device when used with retractable block.
 - Attach the life line of to the Dorsal D-ring of the harness.
- **Training :**
 - It is impertinent to get trained by authorized/ competent person for safe installation adjustment & usage.
- **Maintenance:**
 - Cleaning of soil & dirt with cloth must be done at a safe area to avoid accumulation of static charge.
 - In case of any doubt arising about the safe condition of the product such as crack in the housing or any other metal part, hindered retractions, delayed / early locking fall indicator showing red mark, in such cases immediately remove from service & send it to authorized repair center.
 - Product is safe to use up to maximum temperature of 50 C.
 - Maximum surface temperature of the device is 40°C.
 - Any alteration & misuse of the product can lead to serious injury or death.

5. SPECIFIC CONDITIONS FOR USE:

- Please read the instructions supplied with the product before installing and using the product.
- Cleaning and maintenance shall be conducted in non- hazardous area.
- The product shall only be used by a person trained and competent in its safe use.
- The product shall not be used outside its limitation for only purpose other than for which it is intended

6. WARNING:

- Ensure that the medical condition of the user does not affect his safety in normal and emergency use.
- The Retractable Fall Arrester with all Rescue Retrieval System shall only be used by a person trained and competent in its safe use.
- A rescue plan shall be in place to deal with any emergencies that could arise during the work.
- Do not make any alterations or additions to the Retractable Fall Arrester with Retrieval System without the manufacturer's prior written consent and that any repair shall only be carried out by personnel trained by the manufacturer & duly authorized by him.
- The Retractable Fall Arrester shall not be used outside its limitation, or for any purpose other than that for which it is intended.
- The lifting / lowering function is for rescue purposes only and not for lifting / lowering loads.
- Do not lift the unit by handle strap.

7. ADVICE & INFORMATION:

- The Retractable Fall Arrester with Retrieval System should be the personnel property of the user.
- Ensure that the Retractable Fall Arrester with Retrieval System is compatible with other items when assembled into a system.
- Usage with other un-compatible items may be dangerous & hazardous as the safe function of one item may be affected or interferes with the safe function of another.
- The user should carry out a pre-use check of the Retractable Fall Arrester with Retrieval system, to ensure that it is in a serviceable condition and operates correctly before it is used.
- The pre use check shall involve checking of any wear or abrasion on wire ropes and sign of corrosion if any on metal parts or any breakage of the plastic/aluminium casing.
- Withdraw from use immediately if there is any doubt about its safe condition or if it has already arrested a fall, the equipment shall not be used again until confirmed in writing by a competent person that it is acceptable to do so.
- Ensure that the strength of the anchor device is greater than 12kN.
- Use karabiner conforming to EN 362 for connecting to the anchor points.
- It is advisable to use the dorsal attachment D-Ring of the harness for connection to the Retractable Fall Arrester with Retrieval System. However if it is not possible for any reason, the chest attachment element may also be used.
- The enclosure of the fall arrest block is made of Polyamide, cleaning and maintenance shall only be conducted in a safe area.
- Following conditions may be hazardous & may affect the performance of Retractable Fall Arrester with Retrieval System:-
 - Extreme temperatures
 - Trailing or looping of Lanyards over sharp edges.
 - Extreme acidic or basic environments.
 - Abrasive or sharp edge structures which can damage the equipment.
 - Pendulum falls.

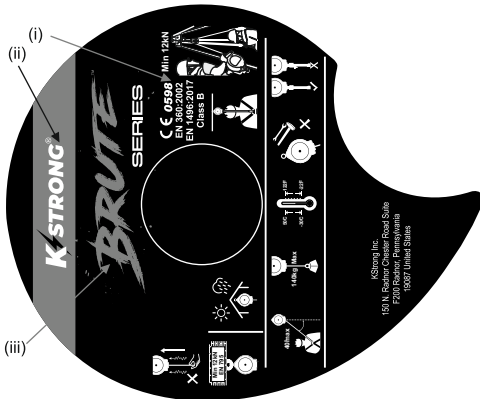
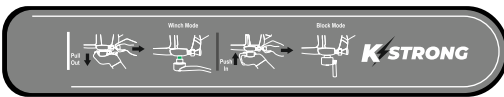
- Ensure that manufacturer's packing is used during transportation to prevent damage. In case original packing is not available, use polybag which is sealed to prevent moisture.
- It is essential for the safety of the user that if the product is resold outside the original country of destination, the reseller shall provide instruction for use, for maintenance, for periodic examination and for repair in the language of the country in which product is to be used.
- There should be direct or indirect visual contact or some other means of communication of the victim with the rescuer at all times during the rescue process.
- Maximum Lifting Distance is 20 Mtrs. (AFS510020R) / 30 Mtrs. (AFS510030R).

8. INSTRUCTION FOR MAINTENANCE:

- In case of minor soiling, wipe the equipment with cotton cloth or soft brush. Do not use any abrasive material. For intensive cleaning wash in water at a temperature between 25C to 50C using a neutral detergent. It should be allowed to dry by itself and be kept away from open fire or any other source of heat. Avoid direct sunlight.
- Store in cool dry place, preferably away from moisture, direct sunlight, extra acidic or basic conditions, sharp edges.

Label

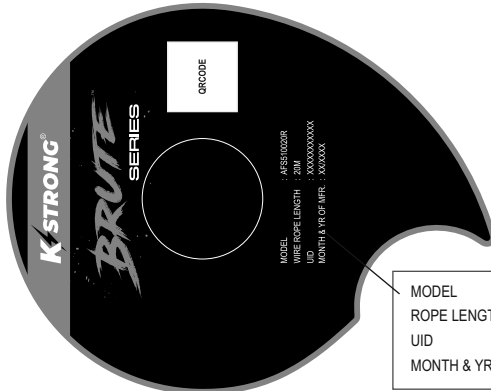
AFS510020R



MARKING EXPLANATION

Retractable Fall Arrester is marked with :


- (i) The 'CE' mark showing that the product meets the requirements of the PPE Regulation (EU)2016/425
- (ii) Identification of the manufacturer
- (iii) Type of product
- (iv) Product Ref. No.
- (v) Wire Rope Length
- (vi) UID for traceability
- (vii) Month/Year of Manufacture




MODEL	: AFS510020R	(iv)
ROPE LENGTH	: 20 MS	(v)
UID	: XXXX	(v)
MONTH & YR OF MFR.	: XXYYYY	(vii)




ICON EXPLANATION:


- 


Keep away from sunlight or heavy rains.




Read the Instructions carefully before each use.
- 


Ensure that the anchorage point has strength of min 12kN.




Connect the lanyard to the dorsal attachment element of your harness.
- 


Ensure that the max angle between the vertical and the lanyard is 40°.




To be used by person not weighing more than 140 kgs.
- 


Ensure that wire rope/webbing has no cuts or abrasion marks before use.



Do not attempt repair unless trained by the manufacturer.
- 

Once the wire rope/Webbing has been reeled out, do not leave it suddenly to retract inside on its own, let it go inside gradually by guiding it slowly inside.



Use between temperature range of -30°C to + 50°C.
- 

Access confined space with Systems having min. Strength of 12kN.

LIFESPAN: The estimated product Lifespan is 10 years from the date of manufacture. The following factors can reduce the Lifespan of the product: intense use, contact with chemical substances, specially aggressive environments, extreme temperature exposure, UV exposure, abrasions, cuts, violent impacts, bad use or maintenance.

DISCLAIMER: Prior to use, the end user must read and understand the manufacturer's instructions supplied with this product at the time of shipment and seek training from their employer's trained personnel on the proper usage of the product. Manufacturer is not liable or responsible for any loss, damage or injury caused or incurred by any person on grounds of improper usage or installation of this product.

EQUIPMENT RECORD				
Product				
Model & type/identification		Trade Name		Identification number
Manufacturer		Address		Tel, email into use
Year of manufacture		Purchase Date		Date first put into use
Other relevant information (eg. document number)				
PERIODIC EXAMINATION AND REPAIR HISTORY				
Date	Reason for entry (periodic examination or repair)	Defects noted, repairs carried out and other relevant information	Name and signature of competent person	Periodic examination next due date

Certification Body :

SATRA Technology Europe Ltd, Bracetown Business Park, Clonee, Dublin D15 YN2P Ireland (Notified Body 2777)

Ongoing Assessment Body:

SGS Fimko Oy, Takomotie 8, FI-00380 Helsinki, Finland (Notified Body 0598)

For EU Declaration, please visit <https://kstrong.com/asia/eu-declaration-form/>



KStrong Inc.
150 N. Radnor Chester Road Suite F200
Radnor, Pennsylvania 19087 United States
Contact number : 1-833-KSTRONG

www.kstrong.com

USA	South America	ASIA
-----	---------------	------