

JUNCTION NUT TO CONNECT ALUMINUM RAILS FOR AFF8000 SYSTEMS

AFF533000

Features

- The Junction nuts secures the AFF8000 Aluminum Rail sections together, ensuring alignment of the sections which allows the AFF539000 Vertical Trolley to move up and down smoothly.

How To Use

Refer to User Instruction Manual



Metal Components

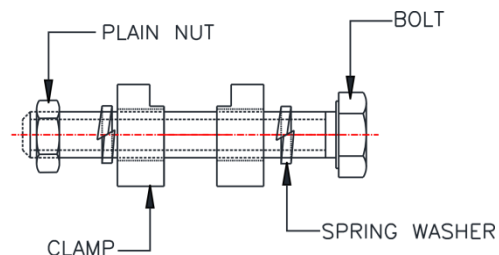
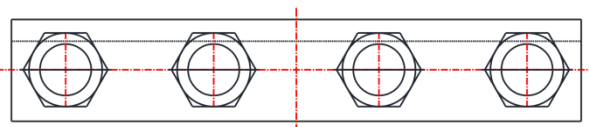
Bolts and Nut Assembly	:	316 Stainless Steel
Junction	:	Aluminum Alloy

Weight

0.18 kg

Relevant Standards

Part of AFF9000 System which Conforms to EN353-1:2014 + A1:2017
ATEX directive 2014/34/UE



CE 0598