

LADDER EXTENSION ARM 2.1M STAINLESS STEEL (AFF7000)

AFF516600(SS)

Features

- Ladder extension arm is a basic and effective tool used to provide additional support for assisting workers while transitioning from a ladder to a raised working surface.
- It easily attaches to nearly any ladder
- Assembly compatible to accommodate minimum Rung diameter of Ø22.0 mm to maximum rung dia. Ø44.0 mm.

How To Use

Refer to User Instruction Manual



Metal Components

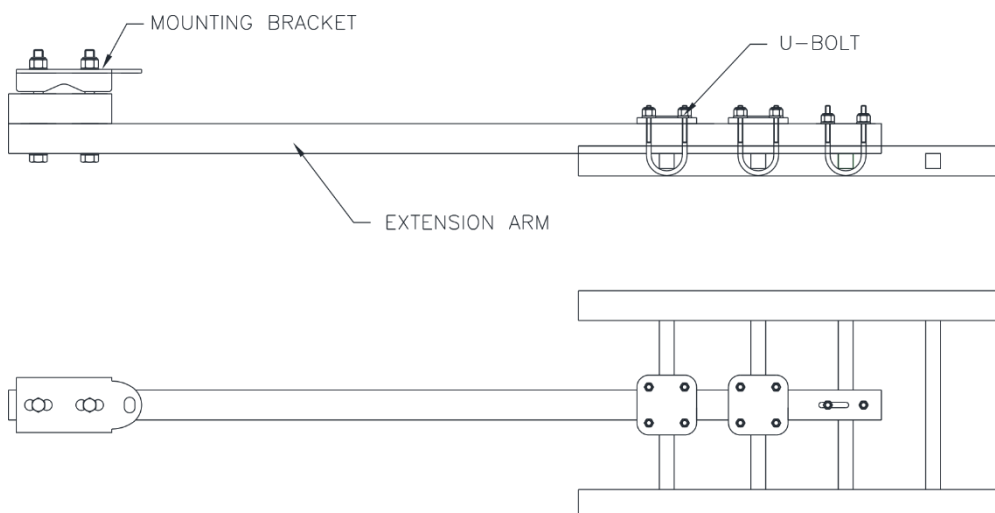
Extension Arm	:	316 Stainless Steel: Polished
Mounting Brackets & Bolts	:	316 Stainless Steel: Polished
Minimum Breaking Strength	:	16 kN

Weight

13.21 kg ± 0.10 kg

Relevant Standards

Conforms to EN 795:2012 Type A



CE 0598