



USER INSTRUCTION MANUAL
BEAM CONNECTOR

THESE INSTRUCTIONS APPLY TO THE FOLLOWING MODEL:

AFA945026

CE 0598
EN 795:2012 Type B

CERTIFIED PRODUCT



AUSTRALIA & NZ STANDARDS
Certified to AS/NZS 5532:2013
Issued by BSI
Vide Lic. No.: BMP 760374

Please read and understand the manufacturer's instructions for each component or part of the complete system. Manufacturer's instructions must be followed for proper use, care, and maintenance of this product. These instructions must be retained and be kept available for the user's reference at all times. Alterations or misuse of this product, or failure to follow instructions, may result in serious injury or death.

Note: The user is advised to keep this user instructions document for the life of the product.

1. **INTRODUCTION:** This product is classed as personal protective equipment (PPE) by the European PPE regulation (EU) 2016/425 and have been shown to comply with this Regulation through the Harmonized European Standard EN 795:2012 Type B Australia & NZ Standards AS/NZS 5532:2013.

This product is designed to minimize the risk of/provide protection against the danger of falling from heights. **However, always remember that no item of PPE can provide full protection and care must always be taken while carrying out the risk related activity.**

2. **PERFORMANCE AND LIMITATIONS OF USE:**

This product has been tested in accordance with EN 795:2012 Type B, Australia & NZ Standards AS/NZS 5532:2013 and have achieved the following performance levels-

EN 795:2012 Type B	Result/Comment
General (Clause 4.1)	(PASS)
Static Strength (Clause 4.4.2.3)	Sustained a force of 12 kN for 3 Min. (PASS)
Dynamic Strength (Clause 4.4.2.2)	When tested with rigid steel mass of 100 kg, the test mass held after test with the remaining stable throughout. (PASS)
Corrosion Resistance (Clause 4.2.2.2)	No corrosion evident after 48 hours of salt spray testing (PASS)

AS/NZS 5532:2013 test	Result/Comment
Static Strength (Clause 5.3)	Sustained a force of 15 kN for 3 minutes (PASS).
Dynamic Performance (Clause 5.3)	When tested with rigid steel mass of 100 kg, the test mass held after test with the device remaining stable throughout. (PASS)

3. **APPLICATION:**

Quick and Easy to install, product is designed to be installed on I-beam.

4. **PRECAUTIONS:**

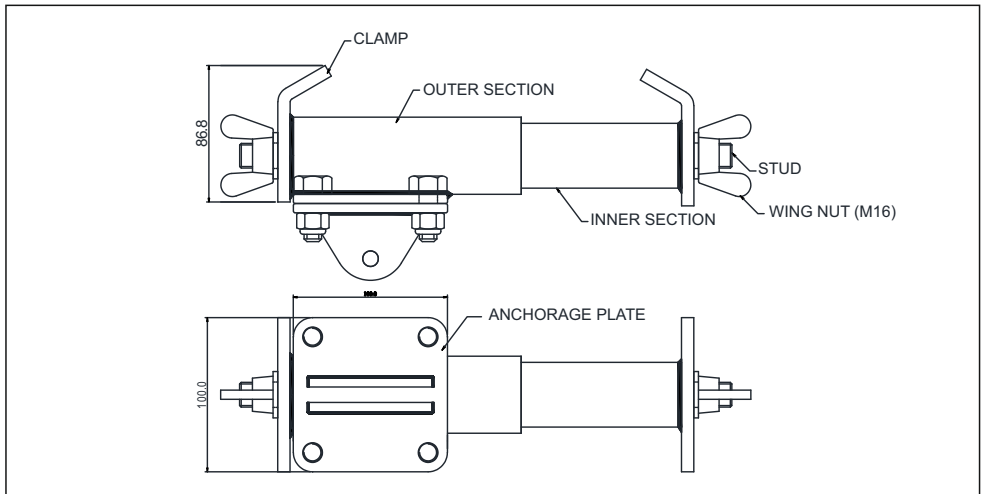
- Ensure the Medical condition of the user does not affect his safety in normal and emergency use.
- The equipment shall only be used by a person trained and competent in its safe use.
- A rescue plan shall be in place to deal with any emergencies that could arise during the work.
- Ensure that the product is installed directly above the user's head.
- It is essential to verify free space required beneath the user at work place before each occasion of use so that in case of a fall there will be no collision with ground or other obstacle in the fall path.
- Beam Connector Device is for Single user only.
- User should connect with the Beam Connector device with help of an energy absorbing lanyard to lower down the fall arrest forces under 6kN.

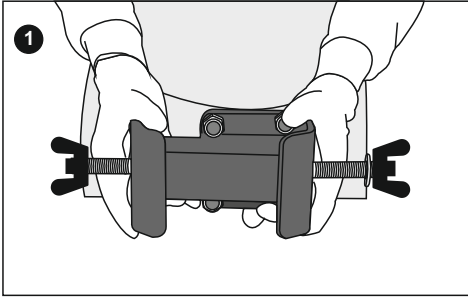
- The Beam Connector device must be marked with inspection date and next due date of inspection.
- Follow the installation steps shared here in the UIM for optimum stability of the Beam Connector device onto the structure.
- Beam Connector device is to be used for only Fall protection and not for Lifting equipments.
- The equipment shall not be used outside its limitations, or for any purpose other than that for which its intended.
- Only make compatible connections for the safe use of the product. Please ensure that safe function of one item does not interfere with the safe function of the other item, otherwise it may cause serious injury or death.
- Perform pre-use check of the Beam Connector before usage to ensure -
 - No crack or dent marks that may raise the concern about the safe working of the unit
 - All the Nuts and Bolts are in place
 - All fasteners are secured properly, no loose connections.
- If any of the above raise a concern about the safe working of the unit, remove the device from the service.
- Prevent the Beam Connector device from the conditions such as extreme temperature, chemical reagent and fumes, direct exposure to sunlight as this may affect the service life of the product.
- Always use the standard packaging of the device during transportation to prevent it from damage.
- It is essential for the safety of the user if the product is resold outside the original country of destination, the seller must provide the instructions for use, periodic examination and maintenance/repair in the language of the country in which it is being used.
- If the product becomes wet, it should be allowed to dry naturally and keep it away from direct heat.
- it is recommended to conduct the periodic examination of the Beam Connector atleast once every year. depending upon the environment, legislation and severity of the usage frequency may be increased. Safety of user depends upon continued efficiency and durability of the product.

5. LIMITATIONS:

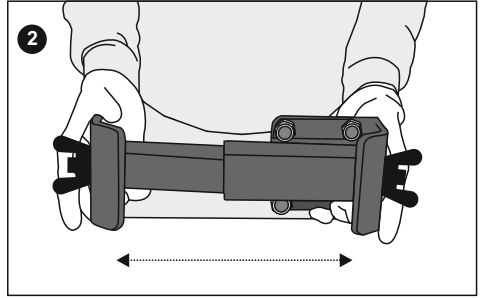
- Product should be the personal property of its user.
- It should not be used in highly acid or basic environment.
- The anchor has been tested to EN 795:2012 Type B / AS/NZS 5532:2013 and is appropriate only for single person use with an energy absorber as per EN 355:2002.
- Ensure that the structure on to which the anchor is fitted is strong enough to withstand a load of 12kN as per EN and a minimum of 15kN for AS/NZS.

6. INSTRUCTIONS FOR INSTALLATION OF BEAM CONNECTOR FOR I-BEAM.

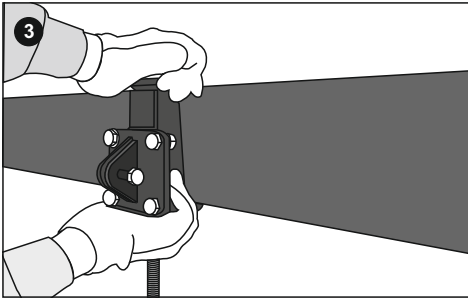




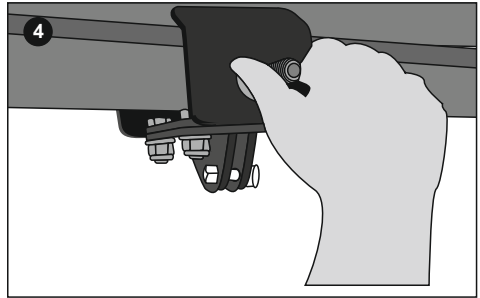
Hold the anchor from both the clamps as indicated in the figure above.



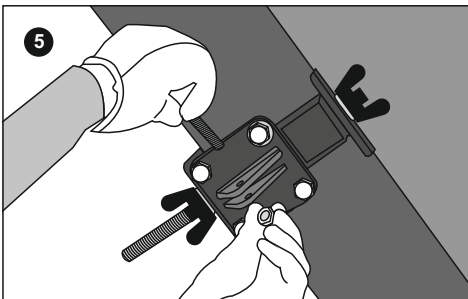
Pull both the clamps in opposite directions to open the gauge between the Beam Connector for placement over the beam.



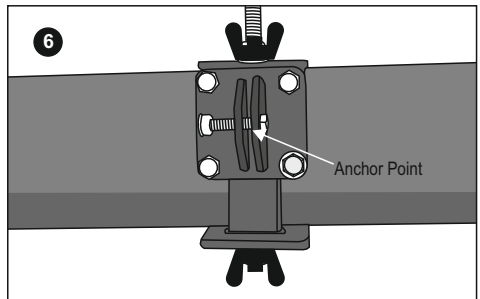
Place the anchor on the beam over the head as indicated in the figure and push in the clamp on the inner section arm.



Tighten the Wingnuts on the clamps from both the sides.



Insert the connecting end/plate of another anchor between the anchor's plates and insert the screw as indicated in the figure above to establish a connection.



The beam connector is now ready to use.

Fall Clearance : If there is a risk of fall or if the only anchorage is below the attachment points on the harness, it is essential to use a lanyard provided with an energy absorber. Before using a shock-absorbing lanyard, check that there is sufficient fall clearance below the user to prevent any collision with the structure or the ground.

7. **INSPECTION:** Visually inspect the system before each use to ensure that it is in a serviceable condition and is operating correctly. If during inspection, doubts are raised about the safety of the system or a component, these should be replaced either by the manufacturer or a competent person.
8. **COMPATIBILITY :** To optimize protection, in some instance it may be necessary to use the anchor with suitable boots/ gloves/ helmet/ ear defenders. In this case, before carrying out the risk-related activity, consult your supplier to ensure that all your protective products are compatible and suitable for your application.
9. **STORAGE AND TRANSPORT :** When not in use, store the anchor away from heavily acidic or basic environment. Never place heavy items on top of it. Also ensure that it is stored away from chemically hazardous environment. Preferably storage should be in dry environment.
10. **REPAIR:** If the product becomes damaged, it will NOT provide the optimum level of protection, and therefore it must be immediately replaced. Never use damaged product.
11. **CLEANING:** In case of minor soiling, wipe the anchor with cotton cloth or a soft brush. Do not use any abrasive material. For intensive cleaning wash the anchor in water at a temperature between 30°C to 60°C by using a neutral detergent (pH 7). The washing temperature should not exceed 60°C. Do not use acid or basic detergents.
12. **WITHDRAWAL FROM USE :** If the system has been used to arrest a fall, it should be removed from service and returned to the manufacturer or a competent repair centre for servicing and re test.
13. **STORAGE AND TRANSPORT:** When not in use, store the anchor in a well-ventilated area away from heavily acidic or basic environment. Never place heavy items on top of it. Also ensure that it is stored away from chemically hazardous environment preferably stored in a dry environment.
14. **WARNING:**
 - Do not make any alterations or additions to the equipment without the manufacturer's prior written consent and that any repair shall only be carried out by personnel trained by the manufacturer and duly authorized by him.
 - The equipment shall not be used outside its limitation, or for any purpose other than that for which it is intended.
 - It is essential for safety of the user that equipment is immediately withdrawn from use should it has been used to arrest a fall. Do not use the product until confirmed in writing by a competent person that it is acceptable to do so.
 - It is important to conduct regular periodic examination of the product because the safety of the user depends upon the continued efficiency and durability of the product.
 - It is recommended to conduct the regular periodic examination of the equipment depending upon the usage frequency and its environment and legislations.
 - It is important to conduct a periodic examination by a competent person at least once in 12 months.
 - Please ensure to follow the installation steps recommended here to achieve the stability of the anchor device during usage. This is important for the safe and intended use of the product.

MARKING**The Anchor is marked with :**

- (i) Identification of the manufacturer
- (ii) Product description
- (iii) Type or product code
- (iv) UID for traceability
- (v) Manufacturing Date
- (vi) Minimum Breaking Strength
- (vii) Norm Reference
- (viii) Read the instructions before use
- (ix) Maximum number of users

Certification Body :

SATRA Technology Europe Ltd, Bracetown Business Park, Clonee, Dublin D15 YN2P Ireland (Notified Body 2777)

Ongoing Assessment Body:

SGS Fimko Oy, Takomotie 8, FI-00380 Helsinki, Finland (Notified Body 0598)

Certification Body & Ongoing Assessment Body (AUSTRALIA & NZ STANDARDS)

BSI Group ANZ Pty Ltd, Suite 1, Level 1, 54 Waterloo Road, Macquarie Park, NSW 2113, Australia.

For EU Declaration, please visit <https://kstrong.com/asia/eu-declaration-form/>



KStrong Australia Pty Ltd

Unit 4-5 20 Lathe Place, Unanderra, New South Wales, Australia 2526

Contact Email: customercare@kstrong.com.au

www.kstrong.com

USA

South America

Asia

Australia

New Zealand

KS GROUP