

STANDING SEAM CLAMP TO SUIT FXLINE POSTS 18MM - 23MM WITH BOLTS AFF4000

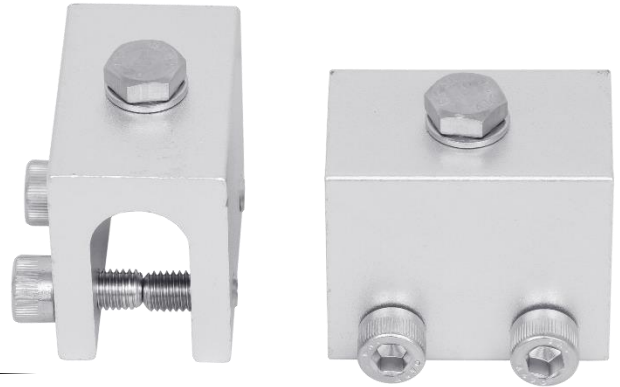
AFA935170

Features

- Fixed block clamps are designed to fix to FXLine Corners, Extremities or Intermediates Posts for standing seam roof profiles.
- Clamp Suitable for 18mm to 23.0mm wide standing seam bulb size profile.
- Comes with specially designed bolts to avoid damage to the roof.

How To Use

Refer to User Instruction Manual



Metal Components

Clamp	:	6061 T6 Aluminum Anodized
Bolts	:	316 Stainless Steel

Weight

0.250 kgs ± 0.010 kgs

Relevant Standards

AFF4000 System Specifications - Conforms to EN795:2012 Type C & TS 16415:2013

