



USER INSTRUCTION MANUAL
MEMBRANE ANCHOR POSTS

THESE INSTRUCTIONS APPLY TO THE FOLLOWING MODELS:

AFA935290, AFA935291, AFA935292(60), AFA935292(90),
AFA935292(120) & AFA935292(CB)

CE 0598

EN 795:2012 Type A and
CEN/TS 16415:2013 Type A

Please read and understand the manufacturer's instructions for each component or part of the complete system. Manufacturer's instructions must be followed for proper use, care, and maintenance of this product. These instructions must be retained and be kept available for the user's reference at all times. Alterations or misuse of this product, or failure to follow instructions, may result in serious injury or death.

Note: The user is advised to keep this user instructions document for the life of the product.

Manufacturer	:	KStrong Asia Pte Ltd, 33A Chander Road, Singapore 219539,
Certification Body	:	SATRA Technology Centre, Wyndham Way, Telford Way, Kettering, NN16 8SD, UK (Notified Body 0321)

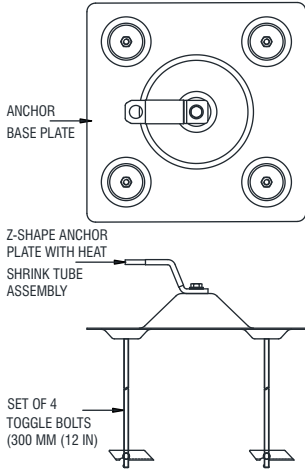
- 1. INTRODUCTION:** Quick and Easy to install, these Anchor Plates come with Swivel and are designed to be installed on metal Pitched Roof. The Membrane Anchor Plate is designed to be fixed on Membrane roof. These anchors are to be fixed on the roof sheets peak to prevent water clogging.
 These Anchor are in compliance with European Standard EN795:2012 Type A for one user and CEN/TS 16415:2013 Type A for up to four users simultaneously.
- 2. PERFORMANCE AND LIMITATIONS OF USE:**
 These Anchors are tested in accordance with EN 795:2012 Type A and [CEN/TS 16415:2013 Type A for SA 87A Series only] and have achieved the following performance levels-

EN 795:2012 Test	Result/Comment
General Requirements for Anchor devices (Clause 4.1)	(PASS) No sharp edges (PASS).
Static Strength (Clause 4.4.2.3)	Sustained a force of 12 kN for 3 minutes (PASS).
Dynamic Strength and Integrity Test (Clause 4.4.1.2)	When tested with rigid steel mass of 100 kg, the test mass held with the device remains stable throughout. (PASS). Anchor Holds an increased load of 300kg for 3 min following dynamic test.
Corrosion Resistance (Clause 4.2.2.1)	No corrosion evident after 48 hours of salt spray testing. (PASS)
TS16415:2013 Type A Test	Results
General Requirement Clause 4.1	Pass
	Specific Requirement
Static Strength Test Clause 4.2.1.2 Dynamic Strength and Integrity test Clause 4.2.1.1	Sustained a Static Load of 15kN (4 users) for 3 mins without failure Drop #01 Peak Force 8.6kN and Max Deflection 79mm Drop #02 Peak Force 7.3kN and Max Deflection 87mm Drop #03 Peak Force 6.4kN and Max Deflection 94mm Following Dynamic Test 900kg load sustained for 3 mins without failure

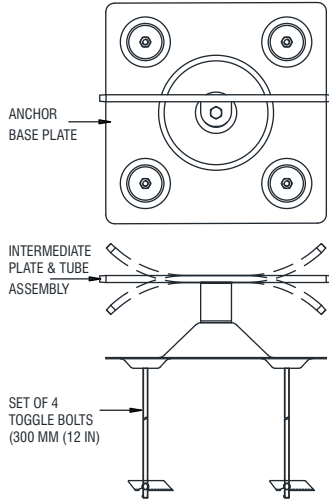
- 3. INSTRUCTIONS FOR USAGE:**
 - The Anchor plates are designed to be fixed on a Membrane Roof with the help of toggle anchor bolts.
 - The Toggle Bolts should be fixed directly thru the purlin or structure for strength.
 - They are compatible with Pitch range 203.0 mm to 263.0 mm

4. FEATURES AND BENEFITS:

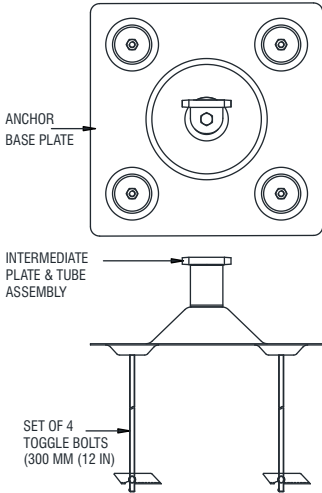
ANCHOR POSTS WITH SET OF 4 NOS TOGGLE ANCHOR



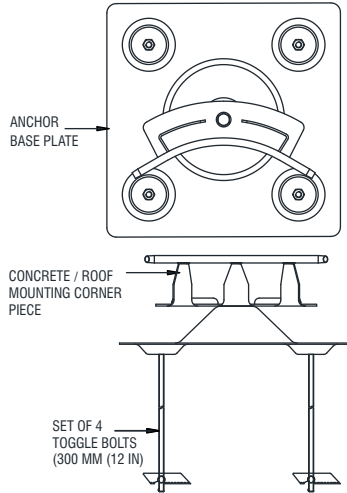
ANCHOR POST (EXTREMITY) WITH SET OF 4 NOS TOGGLE ANCHOR AFA935290



ANCHOR POST (Variable Corner Bend) WITH SET OF 4 NOS TOGGLE ANCHOR AFA935292(CB)

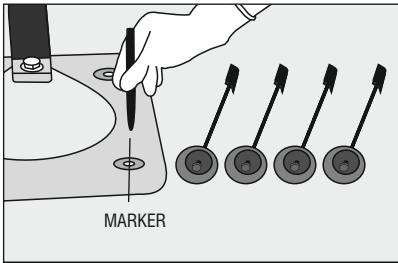


ANCHOR POST (INTERMEDIATE) WITH SET OF 4 NOS TOGGLE ANCHOR AFA935291

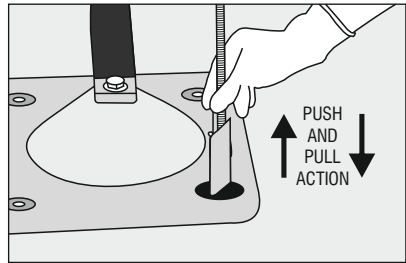


ANCHOR POST (CORNER) WITH SET OF 4 NOS TOGGLE ANCHOR AFA935292(60), AFA935292(90), AFA935292(120)

How to install: Follow the steps for installation of anchor post with Set of 4 Nos Toggle Anchor-

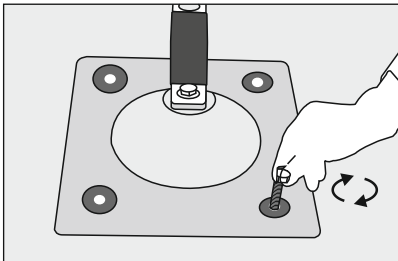


Place all the components of the posts together on the roof. Now, place the post on the place of requirement. Mark the position of the holes using a marker on the membrane roof.

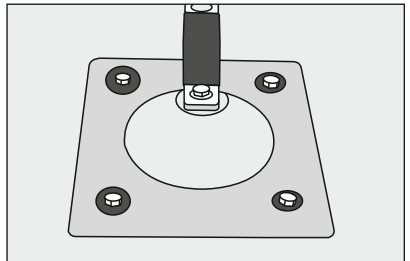


Take a drill and attach a drilling cap of dia ranging between 25-30mm. Drill four holes on the four marked points required for fixing the post.

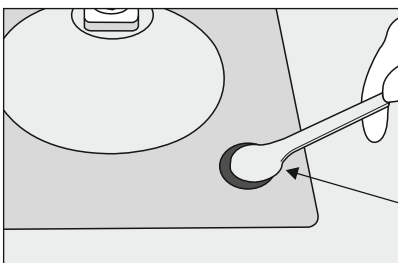
Place the post in perfect alignment with Holes. Insert the provided studs in the post holes using a push and pull action to make sure the passage is clear of obstruction from membrane filling.



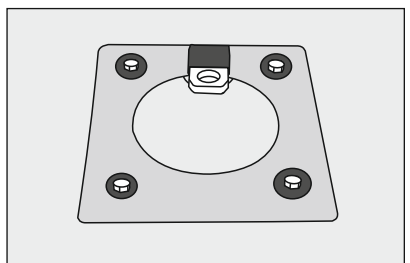
First twist them using hands to let them grab hold of the roof. Now, when all the studs are inserted at their positions,



Repeat the same process for other three studs.



Now, use a wrench to tighten the studs, securing them permanently to the roof.



The post is ready for use.

Note:- Fit the required weather proof cowl and finish the needed weatherproofing after consulting an authorised metal roofing /maintenance contractor.

The minimum insulation thickness is 3 inches (75 mm), with the maximum insulation thickness for a 300 mm (12-inch) thickness being 9 inches, and for a 300 mm (18-inch) thickness, it is 15 inches.

WARNING: Do not install it on Ply Timber deck sheets having thickness less than 18mm or trapezoidal liner sheets having thickness less than 0.7mm. If in doubt, do not install and seek advice from KSTRONG customer care. Ensure that the base plates are located at least 2m away from any roof edge or opening.

5. INSPECTION :

- Visually inspect the system before each use to ensure that it is in a serviceable condition and is operating correctly. If during inspection, doubts are raised about the safety of the system or a component, equipment must be replaced either by the manufacturer or a competent person.

6. LIMITATIONS:

- The Anchor plates should be the personal property of its user.
 - They should not be used in highly acidic or basic environment.
 - The anchor has been tested to EN 795:2012 and is appropriate only for single person use with an energy absorber as per EN 355:2002 that is rated to user mass up to 100kg.
 - Ensure that the equipment is compatible with other items when assembled into a system.
 - Before each use it is essential to verify the free space required beneath the user at work place so that in case of a fall there will be no collision with ground or other obstacle in the fall path.
 - It is essential for the safety of the user that if the product is resold outside the original country of destination, the reseller must provide instructions for use, maintenance, periodic examination and repair in the language of the country in which the product is to be used.
 - A full body harness is the only acceptable body holding device that can be used in a fall arrest system.
 - Always use the dorsal attachment of the harness to connect to the system with the help of steel (swivel) snap hook.
 - When Anchor device is used as part of a fall arrest system, the user shall be equipped with a means of limiting the maximum dynamic forces exerted on the user during the arrest of a fall to a maximum of 6 kN.
 - Anchor Device must be marked with Last Inspection date.
 - Following conditions may be hazardous and may affect the performance of Anchor.
 - Extreme temperature.
 - Trailing or looping of Lanyards over sharp edges.
 - Extreme acidic or basic environments.
 - Abrasive or sharp edge structures which can damage the equipment.
 - Chemical Reagents.
 - Climatic exposure.
 - The user must carry out a pre-use check of the Anchor to ensure that it is in a serviceable condition and operates correctly before it is used.
 - When the equipment become wet, either from being in use or when due to cleaning. It should be allowed to dry by itself and be kept away from open fire or any other source of heat.
 - The Safety of users depends upon the continued efficiency and durability of the equipment.
 - Periodic Examination are only to be conducted by a competent person for periodic examination.
 - User must check for the legibility of product marking before each and every use.
 - It is recommended that the user **MUST** carry out a pre-use inspection of the equipment, to ensure that it is in a serviceable condition and operates correctly before it is used.
 - A rescue plan shall be in place to deal with any emergencies that could arise during the work.
 - For safety reasons and before each use, make sure that in the event of a fall there is no obstacle obstructing the normal deployment of the fall arrest system fixed on this anchor point.
- 7. COMPATIBILITY:** To optimise protection, in some instance it may be necessary to use an anchor with suitable boots/gloves/helmet/ear defenders. In this case, before carrying out the risk-related activity, consult your supplier to ensure that all protective equipment are compatible and suitable for your intended application.
- 8. STORAGE AND TRANSPORT:** When not in use, store the anchor in a well-ventilated area away from coarse acidic or basic environment. Never place heavy items on top of an anchor, ensure that it is stored away from chemically hazardous environment. Preferably storage should be in dry environment.
- 9. REPAIR:** If the product becomes damaged, it will NOT provide the optimum level of protection, and therefore it must be immediately replaced or repaired. Never use damaged product. Repair is permitted, provided that it is either done by the manufacturer or a competent repair centre or individual approved by the manufacturer.
- 10. WITHDRAWAL FROM USE:** If the system has been used to arrest a fall, it must be removed from service and returned to the manufacturer or a competent repair centre for servicing and re test.

11. CLEANING:

In case of minor soiling, wipe the anchor with cotton cloth or a soft brush. Do not use any abrasive material. For intensive cleaning, wash the anchor in water at a temperature between 30°C to 60°C by using a neutral detergent (pH 7). The washing temperature should not exceed 60°C. Do not use acidic or basic detergents.

12. WARNING:

- Do not make any alterations or additions to the equipment without the manufacturer's prior written consent and that any repair shall only be carried out by personnel trained by the manufacturer and duly authorized by him.
- The equipment shall not be used outside its limitation, or for any purpose other than that for which it is intended.
- It is essential for safety of the user that equipment is immediately withdrawn from use should it has been used to arrest a fall. Do not use the product until confirmed in writing by a competent person that it is acceptable to do so.
- It is important to conduct regular periodic examination of the product because the safety of the user depends upon the continued efficiency and durability of the product.
- It is recommended to conduct the regular periodic examination of the equipment depending upon the usage frequency and its environment and legislations.
- It is important to conduct a periodic examination by a competent person at least once in 12 months.
- Please ensure to follow the installation steps recommended here to achieve the stability of the anchor device during usage. This is important for the safe and intended use of the product.

MARKINGS**The Anchor Post is marked with:-**

- i) Identification of manufacturer.
- ii) Type of product code.
- iii) Norm Reference.
- iv) Product description
- v) Read the instruction before use.
- vi) Batch Number
- vii) Serial Number
- viii) Date of Manufacturing
- ix) Number of Users

KSTRONG®
UNRIVALED SAFETY

MEMBRANE ROOF TOP ANCHOR EXTREMITY POST

AFA935290

UID : XXXXXXXXXXXXX
Date of Mfg : XXXX
M.B.S. : 15kN

Read the user instructions carefully before each use.

MAX

EN 795:2012 Type A
TS 16415:2013 Type A

MADE IN INDIA

KStrong Asia Pte Ltd
33A Chander Road, Singapore 219539

KSTRONG®
UNRIVALED SAFETY

MEMBRANE ROOF MOUNTING VARIABLE CORNER BEND POST

AFA935292(CB)

UID : XXXXXXXXXXXXX
Date of Mfg : XXXX
M.B.S. : 15kN

Read the user instructions carefully before each use.

MAX

EN 795:2012 Type C
TS 16415:2013 Type C

MADE IN INDIA

KStrong Asia Pte Ltd
33A Chander Road, Singapore 219539

KSTRONG®
UNRIVALED SAFETY

MEMBRANE ROOF TOP ANCHOR INTERMEDIATE POST

AFA935291

UID : XXXXXXXXXXXXX
Date of Mfg : XXXX
M.B.S. : 15kN

Read the user instructions carefully before each use.

MAX

EN 795:2012 Type C
TS 16415:2013 Type C

MADE IN INDIA

KStrong Asia Pte Ltd
33A Chander Road, Singapore 219539

KSTRONG®
UNRIVALED SAFETY

MEMBRANE ROOF MOUNTING CORNER POST (120 DEGREE)

AFA935292(120)

UID : XXXXXXXXXXXXX
Date of Mfg : XXXX
M.B.S. : 15kN

Read the user instructions carefully before each use.

MAX

EN 795:2012 Type C
TS 16415:2013 Type C

MADE IN INDIA

KStrong Asia Pte Ltd
33A Chander Road, Singapore 219539

KSTRONG®
UNRIVALED SAFETY

MEMBRANE ROOF MOUNTING CORNER POST (90 DEGREE)

AFA935292(90)

UID : XXXXXXXXXXXXX
Date of Mfg : XXXX
M.B.S. : 15kN

Read the user instructions carefully before each use.

MAX

EN 795:2012 Type C
TS 16415:2013 Type C

MADE IN INDIA

KStrong Asia Pte Ltd
33A Chander Road, Singapore 219539

KSTRONG®
UNRIVALED SAFETY

MEMBRANE ROOF MOUNTING CORNER POST (60 DEGREE)

AFA935292(60)

UID : XXXXXXXXXXXXX
Date of Mfg : XXXX
M.B.S. : 15kN

Read the user instructions carefully before each use.

MAX

EN 795:2012 Type C
TS 16415:2013 Type C

MADE IN INDIA

KStrong Asia Pte Ltd
33A Chander Road, Singapore 219539

LIFESPAN: The estimated product Lifespan is 10 years from the date of manufacture. The following factors can reduce the Lifespan of the product: intense use, contact with chemical substances, specially aggressive environments, extreme temperature exposure, UV exposure, abrasions, cuts, violent impacts, bad use or maintenance.

DISCLAIMER: Prior to use, the end user must read and understand the manufacturer's instructions supplied with this product at the time of shipment and seek training from their employer's trained personnel on the proper usage of the product. Manufacturer is not liable or responsible for any loss, damage or injury caused or incurred by any person on grounds of improper usage or installation of this product.

EQUIPMENT RECORD				
Product				
Model & type/Identification		Trade Name	Identification number	
Manufacturer		Address	Tel, email into use	
Year of manufacture		Purchase Date	Date first put into use	
Other relevant information (eg. document number)				
PERIODIC EXAMINATION AND REPAIR HISTORY				
Date	Reason for entry (periodic examination or repair)	Defects noted, repairs carried out and other relevant information	Name and signature of competent person	Periodic examination next due date

For EU Declaration, please visit <https://kstrong.com/asia/eu-declaration-form/>



KStrong Asia Pte Ltd
 33A Chander Road,
 Singapore 219539
 Contact Email: customercare@kstrong.com

www.kstrong.com

USA South America Asia
