

K^{STRONG}
UNRIVALED SAFETY.

CASE STUDY

WESTSIDE CITY RESORTS WORLD

GRAND WESTSIDE HOTEL

INSTALLATION OF ROOF LIFELINE FOR BRIDGEWAY

AFF4000 IMPACT HORIZONTAL LIFELINE SYSTEM

PROJECT CASE STUDY

SCAN TO VIEW
PRODUCT



Client : Westside City Resorts World
Industry : Hotels, Restaurants, Leisure Parks, & Entertainment Centers
Project name : Installation of Roof Horizontal Lifeline for Westside City Resorts World Bridgeway
Products used : AFF4000 Impact Series Horizontal Lifeline System on Standing Seam Roof

Background

Westside City Resorts World is an integrated resort complex located within Entertainment City in Parañaque, Philippines. The development is set to include a mix of luxury hotels, gaming facilities, and a variety of entertainment attractions.

Key Features:

- **Main Hotel & Casino:** 475 luxury hotel rooms, ballroom, gaming tables, and slot machines
- **Other Attractions:** Shopping mall, Grand Opera House, restaurants, theatre district, residential spaces, and township components

Requirement

The client required a compliant fall protection system specifically designed for a **standing seam metal roof** on the **bridgeway** connecting the main center and casino to the hotel, which crosses a major highway.

Key challenges included:

- A **domed roof structure** requiring customized configuration
- A **non-penetrating solution** to preserve the integrity of the standing seam roof
- An **aesthetically integrated design** in line with the architectural vision
- **Safe access for maintenance and cleaning** activities along the bridgeway



KStrong Solution

KStrong supplied and installed the **AFF4000 Impact Series Horizontal Lifeline System**, specifically engineered for standing seam roof applications. The system met the client's need for:

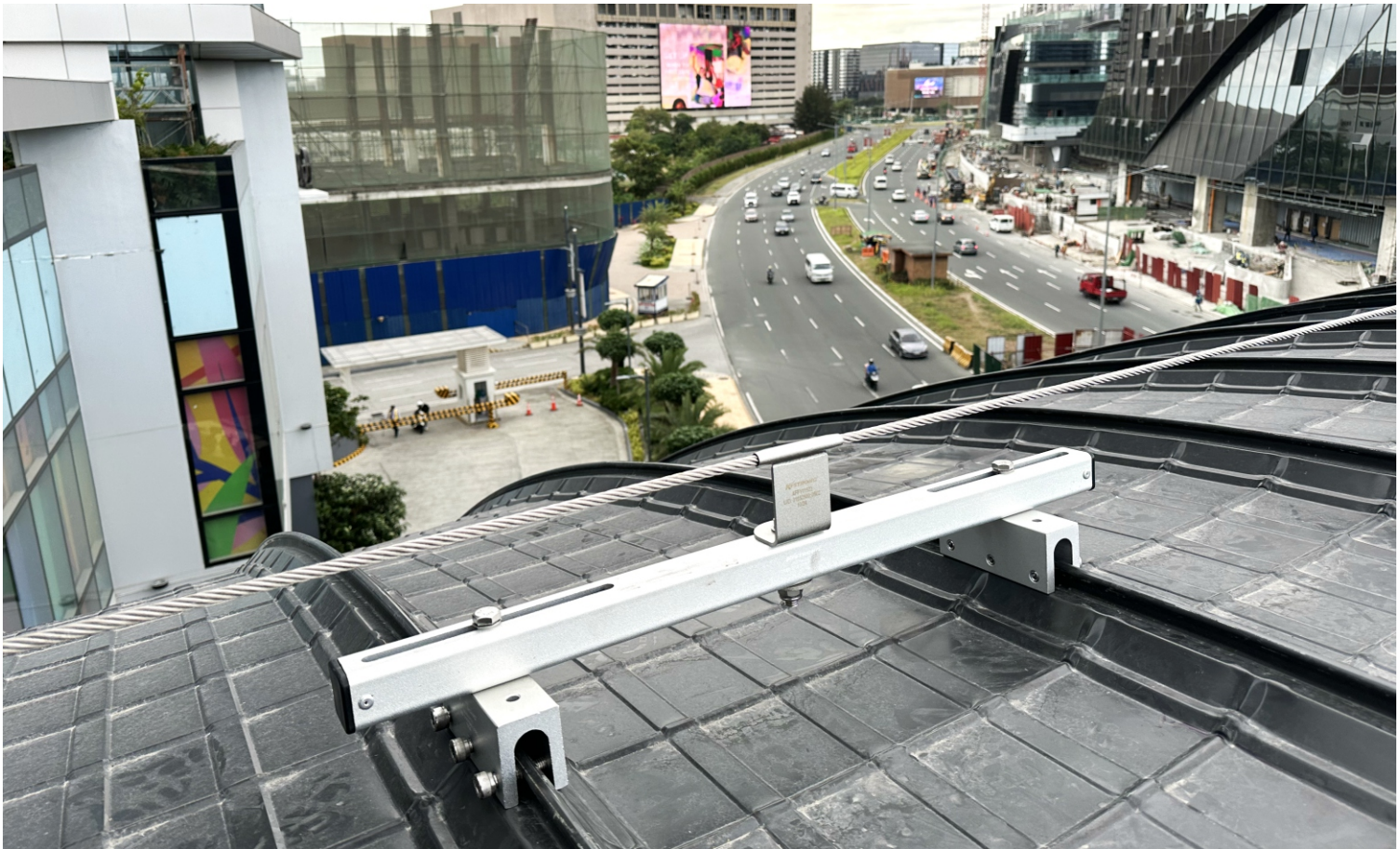
- **Non-penetrating roof clamps** that preserved the roof's waterproofing
- **Architectural compatibility** with the bridgeway's design
- **Reliable fall protection** for safe routine maintenance access

KStrong's solution delivered both **compliance and safety** while enhancing the **functional utility** of the bridgeway without compromising its aesthetic appeal.

About KStrong

The founders of KStrong have been successfully manufacturing personal protective equipment globally for over 20 years. With the support of a large team of highly experienced research and product development specialists along with global manufacturing facilities, KStrong is poised to become the preeminent brand of choice for personal protective safety products. KStrong takes pride in assuring careful measures to ensure all products meet applicable government codes and professional standards, such as EN, AS/NZS and ANSI. We look forward to helping your company protect its most valued possession, its workers!







KStrong Asia Pacific

Contact E-mail : customercare@kstrongasia.com

www.kstrong.com

USA

SOUTH AMERICA

ASIA

KS GROUP