

**KSTRONG**<sup>®</sup>  
UNRIVALED SAFETY.

**KS GROUP**

**CASE STUDY**  
**MULTINATIONAL CHOCOLATE BRAND**



**ROOF LIFELINE SYSTEM**

**FXLINE AFF4000 FIXED LINE SYSTEM**

## PROJECT CASE STUDY

SCAN TO VIEW  
PRODUCT



**Client** : Multinational Chocolate Brand  
**Project name** : Roofing Lifeline System for Multinational Chocolate Brand  
**Products used** : FXLINE AFF4000 Klip-Lok Roofing Lifeline System

### Background

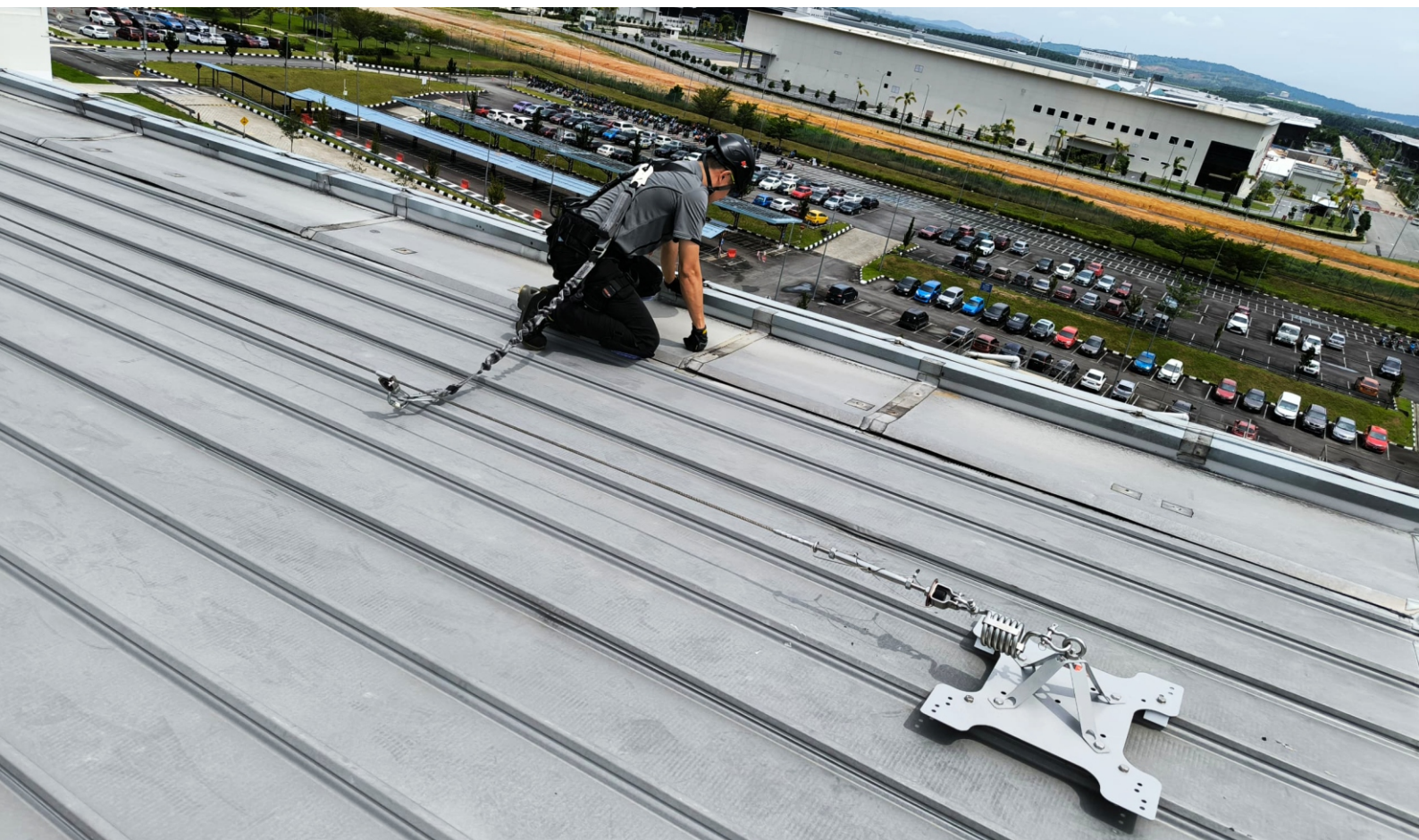
A Multinational Chocolate Brand has established a new state-of-the-art manufacturing plant in Johor, Malaysia, to meet the growing consumer demand across more than 35 countries in Asia, Europe, the Middle East, and Africa, as well as to support supplies to the US and Latin America.

In collaboration with KStrong Asia, the client conducted a thorough risk assessment and enhanced the safety measures for working at heights. They provided integrated fall protection equipment to workers and contractors, ensuring the prevention of fall incidents during roof leak repairs, gutter maintenance, and solar panel servicing.

### Requirement

The installed lifeline complies with EN795:2012 and CEN/TS 16415 standards. It is mounted on the Klip-Lok roof using KStrong clamps, eliminating the need to puncture the roof and thereby preserving the warranty provided by the roofer. The installation was carried out safely, adhering to working-at-height standards, and was performed by a competent and certified installer in Malaysia.

These systems were designed to be robust enough to arrest a worker's fall while also protecting the building envelope from damage in the event of a fall. High-quality materials were essential to ensure durability under the high heat and humidity of Malaysia's tropical climate.



## KStrong Solution

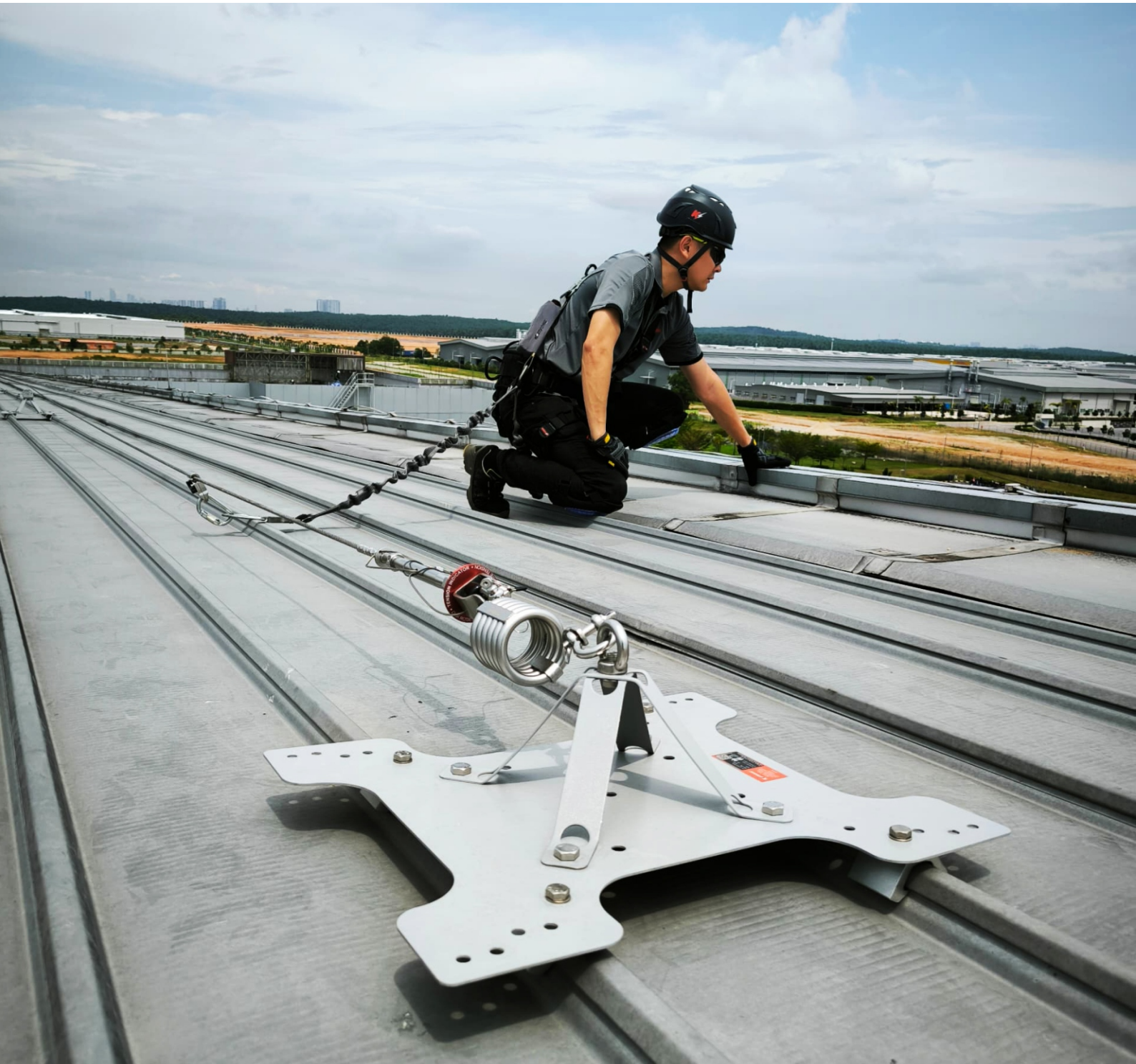
---

KStrong utilized the FXLINE AFF4000 Extremity Post Series, which is compatible with all types of Klip-Lok profiles as needed. The lifeline is certified to EN795:2012 and CEN/TS 16415, using anchor types A and C. KStrong's local certified installer, along with a trained, professional, and competent installation team, met the client's highest standards.

## About KStrong

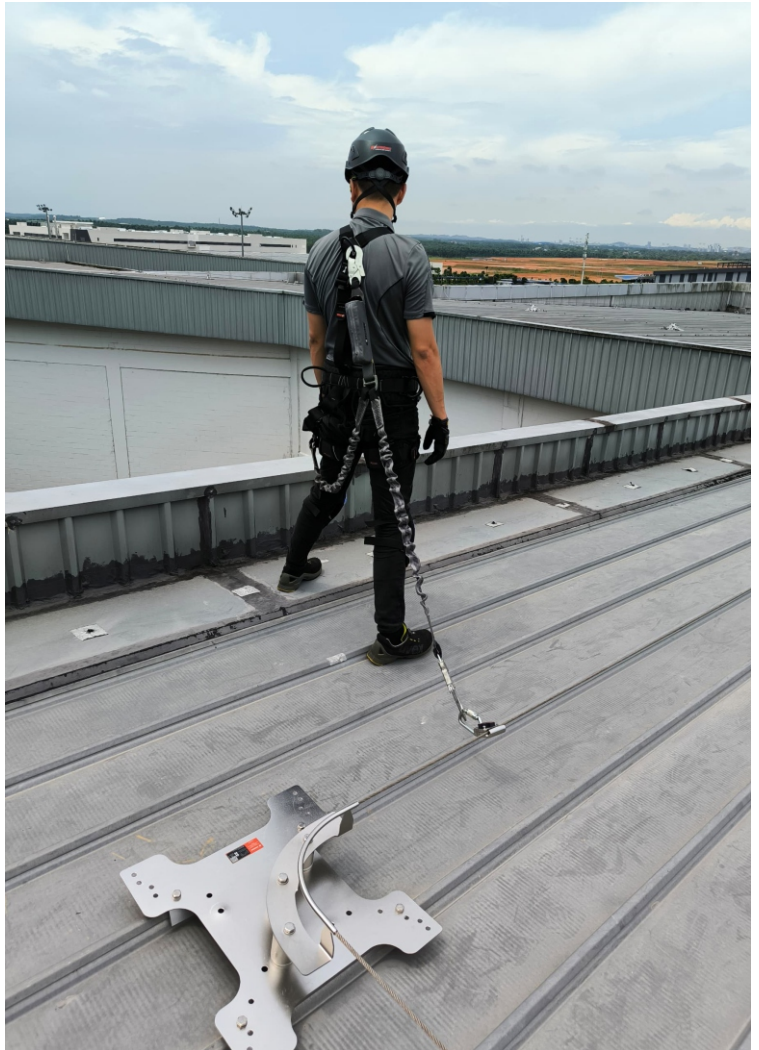
---

The founders of KStrong have been successfully manufacturing personal protective equipment globally for over 20 years. With the support of a large team of highly experienced research and product development specialists along with global manufacturing facilities, KStrong is poised to become the preeminent brand of choice for personal protective safety products. KStrong takes pride in assuring careful measures to ensure all products meet applicable government codes and professional standards, such as EN, AS/NZS and ANSI. We look forward to helping your company protect its most valued possession, its workers!



# Project Gallery

---





KStrong Asia Pacific  
Contact E-mail : [customercare@kstrong.com](mailto:customercare@kstrong.com)

[www.kstrong.com](http://www.kstrong.com)

---

USA

SOUTH AMERICA

ASIA

---