

KSTRONG[®]
UNRIVALED SAFETY.

KS GROUP

CASE STUDY
HEINEKEN LAO BREWERY



ROOF LIFELINE SYSTEM

IMPAXX AFF4000 FIXED LINE SYSTEM

PROJECT CASE STUDY

Client : Heineken Lao Brewery
Project name : Roof Lifeline System
Products used : IMPAXX AFF4000 Fixed Line System

SCAN TO VIEW
PRODUCT



Background

Heineken Lao Brewery (HLB), previously known as Lao Asia Pacific Breweries in 2017, is a producer of beer in Laos and is based in Vientiane. It is the second brewer to be granted a beer investment license by the Government of Laos.

In collaboration with KStrong Asia, Heineken Lao Brewery performed a global audit and improved the safety aspect of working-at-heights by providing a fall protection roof lifeline system for maintenance staff when working on the roof to prevent fall incidents due to the fragility of the skylight roof as well as the wear and tear of the roof over the years.

Requirement

The lifeline installed conforms to international standards as required by Heineken Lao Brewery to be fully certified EN795:2012. The total length of the lifeline installed is 668 meters which covers the entire roof area. The lifeline system provided the maintenance staff with freedom of movement to access every area of the roof for maintenance work while being safely tethered to the lifeline.

The lifeline system installed is robustly designed to arrest a worker's fall and also protect the building envelope from damage in the event of a fall. The actual install needed to be carried out safely when working at standard heights and the installer had to be certified and competent.

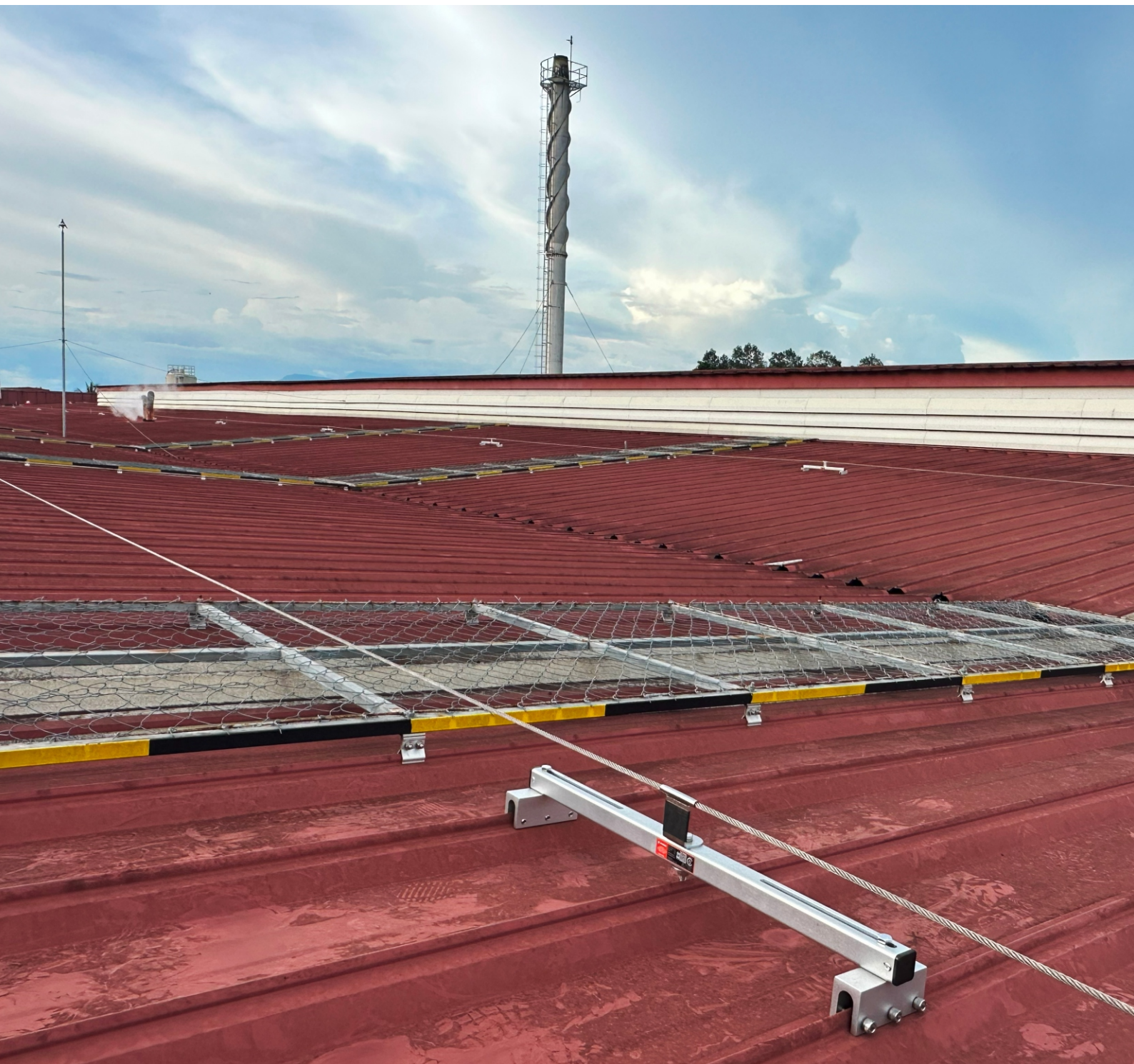


KStrong Solution

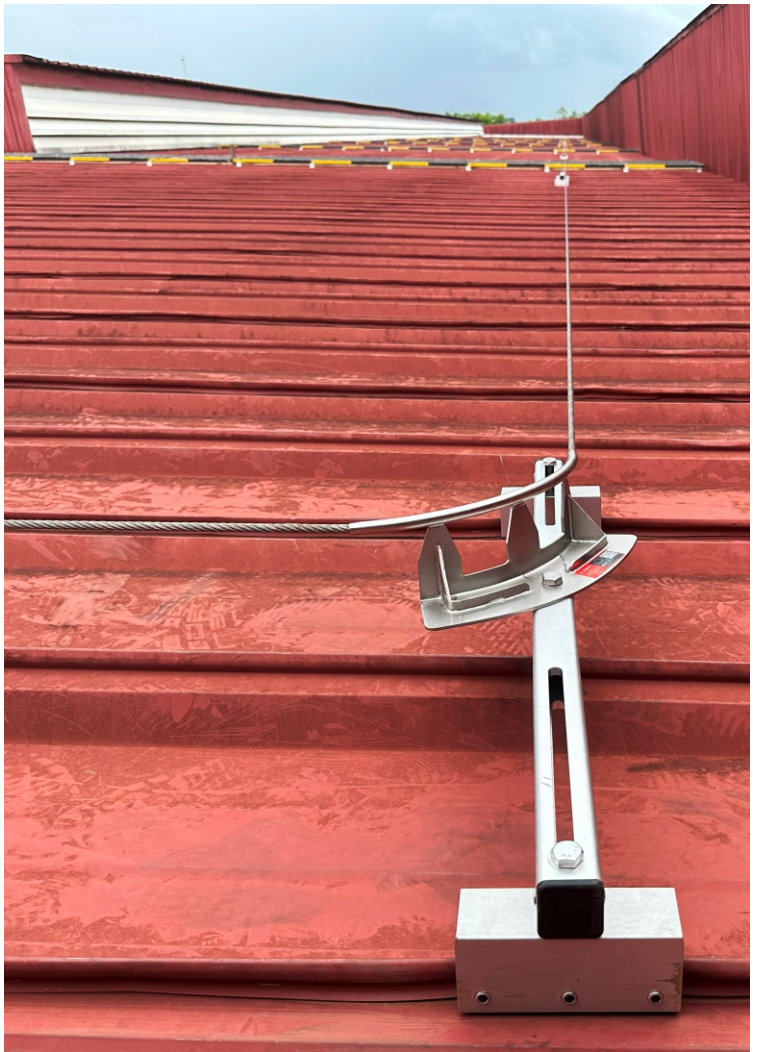
KStrong solutions successfully met the requirements of Heineken Lao Brewery by installing the new AFF4000 IMPAxx Series Fixed Lifeline System. This series is adjustable to the wide profile of the roof, which was a key requirement. Additionally, the installed lifeline is certified to EN795:2012, supported by comprehensive engineering design and on-site lifeline engineer supervision. The installation was efficient and well-equipped team with all necessary tools completed a full load-proof test within just four days.

About KStrong

The founders of KStrong have been successfully manufacturing personal protective equipment globally for over 20 years. With the support of a large team of highly experienced research and product development specialists along with global manufacturing facilities, KStrong is poised to become the preeminent brand of choice for personal protective safety products. KStrong takes pride in assuring careful measures to ensure all products meet applicable government codes and professional standards, such as EN, AS/NZS and ANSI. We look forward to helping your company protect its most valued possession, its workers!



Project Gallery





KS GROUP

KStrong Asia Pacific

Contact E-mail : customercare@kstrongasia.com

www.kstrong.com/asia

USA SOUTH AMERICA AUSTRALIA NEW ZEALAND ASIA
