

**K<sup>STRONG</sup>**  
UNRIVALED SAFETY.

CASE STUDY

PT FLORA FOOD MANUFACTURING  
INDONESIA



LIFELINE SYSTEM FOR ROOF MAINTENANANCE

AFF4000 IMPACT HORIZONTAL LIFELINE SYSTEM





## PROJECT CASE STUDY

**Client** : PT Flora Food Manufacturing Indonesia  
**Industry** : Food Processing  
**Project name** : Roof Lifeline System for Roof Maintenance  
**Products used** : IMPACT Kliplik Series with Special Clamp to fit 406 Profiles

### Background

At **PT Flora Food Manufacturing Indonesia**, ensuring workplace safety is a top priority—especially when it comes to working at heights. Over time, the building had been in use for many years, and the need for regular roof maintenance was steadily increasing. As more workers were required to access the roof, so did the risk of fall incidents. To protect their employees and meet safety compliance, the management sought a long-term solution that would provide **permanent anchor connectors** and a **safety lifeline system**. This setup was critical to fulfilling the full **ABC of fall protection**, ensuring workers could carry out their tasks on the rooftop with confidence and security.

### Requirement

The lifeline system needed to cover the entire roof area and be compatible with the **Kliplik 406 roof profile**. It was essential that the system could safely support **up to four users working simultaneously**, while also complying with international safety standards **EN795:2012** and **CEN TS 16415:2013**. To ensure proper installation and functionality, on-site testing was required to verify that the system was safe and secure. Additionally, all members of the installation team were **certified professionals** and were required to use **proper temporary fall protection** throughout the installation process.



## KStrong Solution

---

To meet all project requirements, the **KStrong IMPACT Kliplok System** was selected—featuring a specially designed clamp compatible with the **Kliplok 406 roof profile**, which KStrong was able to supply. An **experienced and certified installation team** was engaged, ensuring full compliance with both KStrong's standards and **local Indonesian regulations**. A detailed installation timeline was developed, with all team members protected using

KStrong's temporary fall protection systems throughout the process. In line with KStrong's standard procedures, on-site testing of the **extremity anchors and wire terminations** was carried out and fully documented as part of the system handover protocol. To complete the project, **usage and maintenance training** was provided to PT Flora Food Manufacturing Indonesia's employees, reinforcing KStrong's

## About KStrong

---

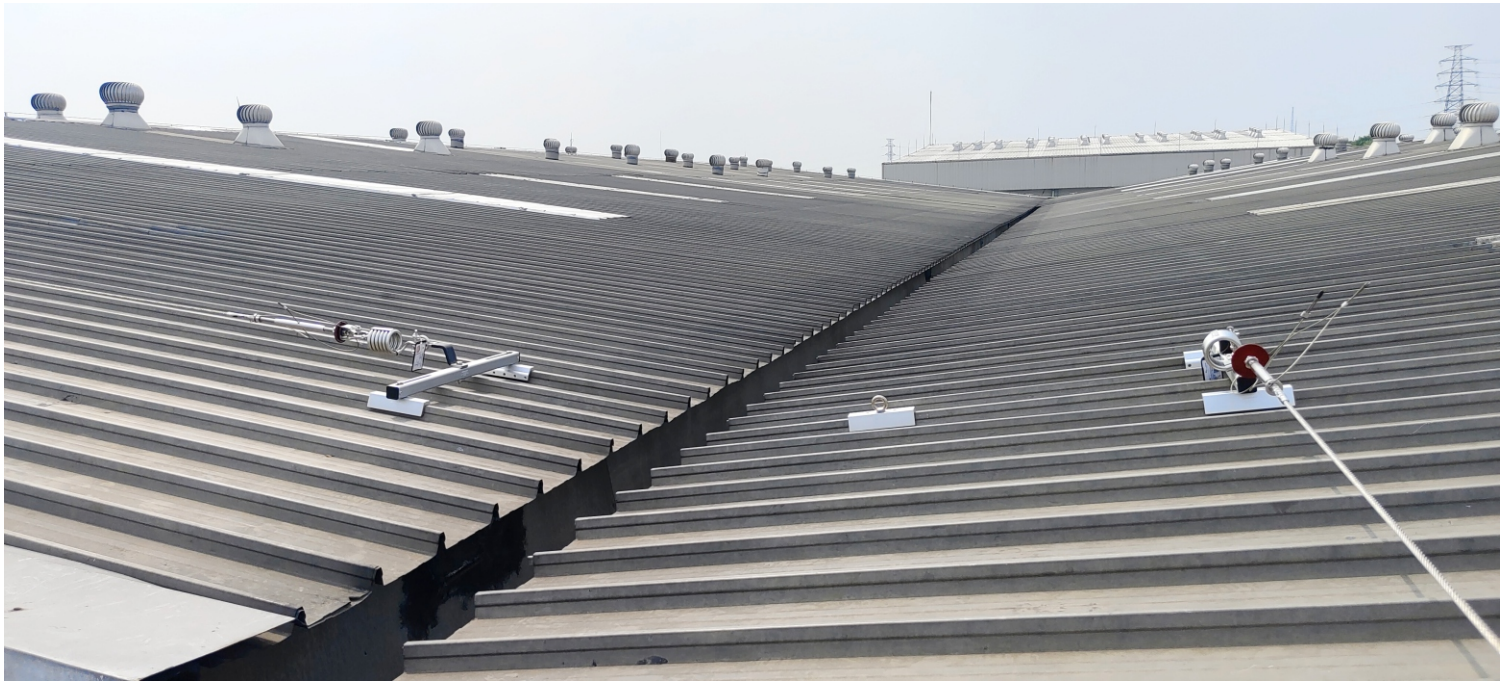
The founders of KStrong have been successfully manufacturing personal protective equipment globally for over 25 years. With the support of a large team of highly experienced research and product development specialists along with global manufacturing facilities, KStrong is poised to become the preeminent brand of choice for personal protective safety products. KStrong takes pride in assuring careful measures to ensure all products meet applicable government codes and professional standards, such as EN, AS/NZS and ANSI. We look forward to helping your company protect its most valued possession, its workers!





# Project Gallery

---







KStrong Asia Pacific

Contact E-mail : [customercare@kstrongasia.com](mailto:customercare@kstrongasia.com)

[www.kstrong.com/asia](http://www.kstrong.com/asia)

---

USA

SOUTH AMERICA

ASIA

---

**KS GROUP**