

**KSTRONG**<sup>®</sup>  
UNRIVALED SAFETY.

**KS GROUP**

**CASE STUDY**

**ROOFING LIFELINE FOR MAIN BUILDING**  
**IMPACT FIXED LINE SYSTEM**  
**FOR ROOF APPLICATION**



**EUROPEAN MULTINATIONAL IN MALAYSIA**

**IMPACT FIXED LINE SYSTEM  
FOR ROOF APPLICATION**

## PROJECT CASE STUDY

SCAN TO VIEW  
PRODUCT

**Client** : European Multinational with Malaysian Facility  
**Project name** : Roofing Lifeline for Main Building  
**Product used** : Impact Fixed Line System for Roof Application



### Background

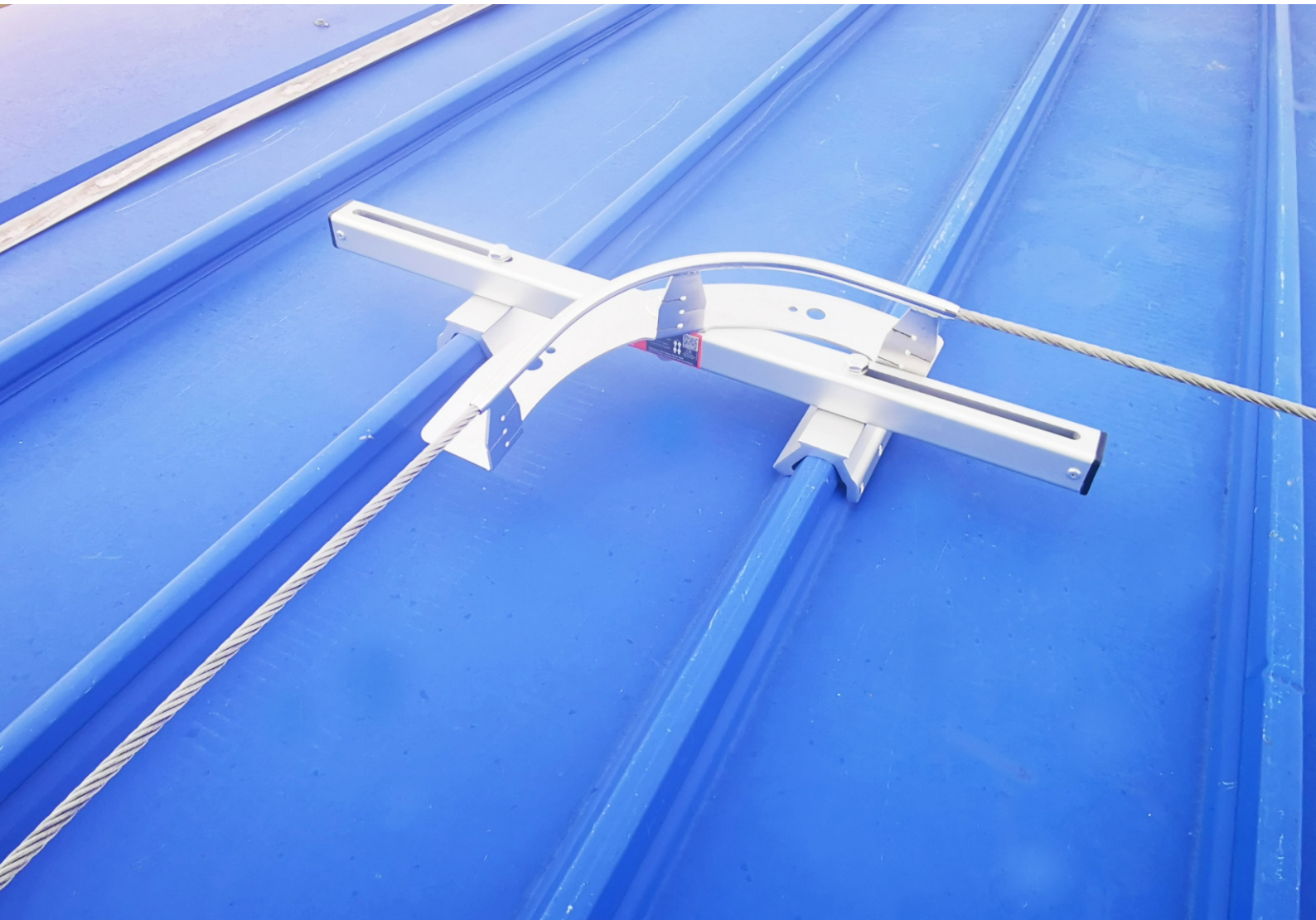
---

This European multinational is one of the largest paints and coating manufacturers in Malaysia. They have a strong commitment to protecting people and the environment. They are very keen when it comes to Occupational Health Safety to assure the well-being of their employees and contractors. Working At Heights is one of the highest-risk activities for employees and workers thus this Multinational strives to mitigate any risks regarding activity when working on roofs. They thus needed the right anchorage points in a certified system to ensure 100% tie-off during work activities.

### Requirement

---

The roof profile used was a Klip-Lok system to avoid the necessity of any holes being made on the roofs metal sheets so as to prevent any water leakage as well as avoiding any affect to the roof warranty, a specific requirement of the Multinational client. The main building required a roof safety lifeline system specifically designed to follow the edge of the solar panel's roof layout. The safety lifeline had to comply with international standards for anchors to respect their status as a multinational company that complies with the highest international safety standards.



## KStrong Solution

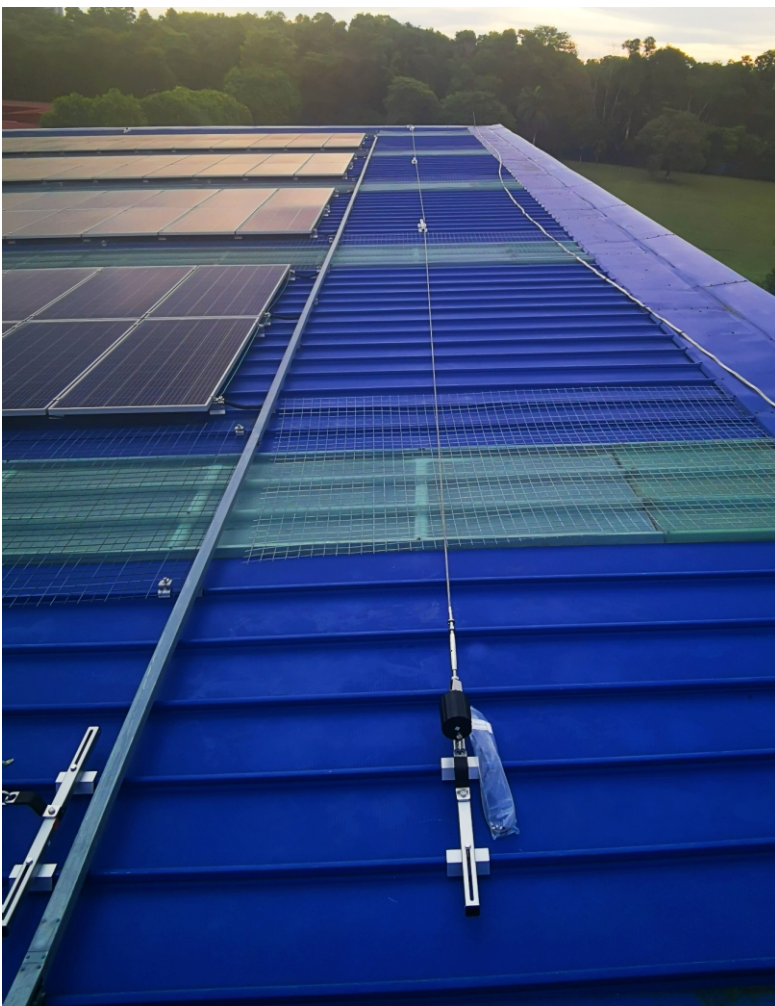
---

KStrong offered the Impact Series Fixed Line Roof System by using clamp methods adjusted with the right torque. Note that the design took into consideration all the safety requirements that included minimizing swing falls on the edge of the roof. The Impact series has been certified by EN795:2012 type C anchor and CEN TS 16415 for multiple users. KStrong was chosen because of our competitive advantages in terms of product design, quality, value, and local support. **KStrong installed a total length of 500 meters of lifeline for this project.**

## About KStrong

---

The founders of KStrong have been successfully manufacturing personal protective equipment globally for over 20 years. With the support of a large team of highly experienced research and product development specialists along with global manufacturing facilities, KStrong is poised to become the preeminent brand of choice for personal protective safety products. KStrong takes pride in taking careful measures to ensure all products meet applicable respective government codes and professional standards, such as EN, AS/NZS and ANSI. We look forward to helping your company protect its most valued possession, its workers!





***KS GROUP***

KStrong Asia Pacific

Contact E-mail : [customercare@kstrongasia.com](mailto:customercare@kstrongasia.com)

[www.kstrong.com/asia](http://www.kstrong.com/asia)

---

USA    SOUTH AMERICA    AUSTRALIA    NEW ZEALAND    ASIA

---