

BRUTE TYPE 3 RETRACTABLE FALL ARREST WITH RETRIEVAL

KStrong has developed a range of Retractable Fall Arrest Blocks with an integrated Rescue Retrieval function that allows a person (after a fall) to be lifted up or down in a controlled manner, this eliminates the rescuer to descend to the person and reduces the amount of time involved to carry out the rescue.



CE 0598

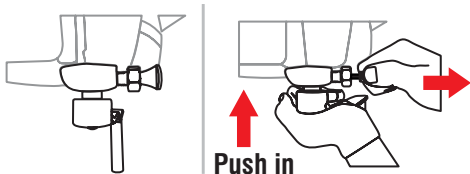
EN 360:2002

EN 1496:2017 Class B

IT IS EASY TO SHIFT TO WINCH MODE FROM BLOCK MODE (AND VICE VERSA) FOLLOWING THE BELOW STEPS

BLOCK MODE

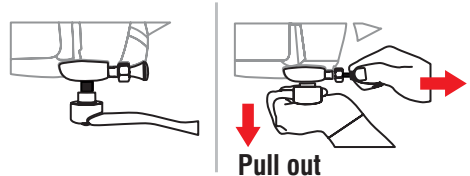
Enables easy movement of the user while working in confined space



Pull the pin and push the handle to reverse in Block mode

WINCH MODE

Enables easy retrieval of the victim post fall arrest



Pull the pin and handle to shift to Winch Mode

Features and Benefits

- ♦ Swivel Anchorage Eye
- ♦ High Impact Load Bearing Polymer Casing
- ♦ Ergonomic Carry Handle for ease of transportation
- ♦ Locking Pin to engage and release Fall Arrest and Rescue mode
- ♦ Integrated manual rescue mode function (hoisting and descending)
- ♦ Automatic Retractable Block
- ♦ Hydro Seepage System to allow water to be drained from block
- ♦ 4.5mm Galvanised Steel Cable for added strength and safety
- ♦ Snout reduces the locking of the cable when it is suddenly released
- ♦ Load Capacity 140kg
- ♦ MBS-15kN
- ♦ Temperature Range : -30 to +50 C
- ♦ QR code for ease of Identification and Service History
- ♦ Steel Swivel Snap Hook with Fall Indicator
- ♦ Can be supplied with Stainless Steel Cable and Stainless Steel Swivel Snap Hook on Request

Materials

- ♦ Polymer Casing
- ♦ 4.5mm Galvanised Steel Wire - MBS 15kN
- ♦ Galvanised Steel Snap Hook - MBS 23kN
- ♦ Galvanised Steel Karabiner - MBS 23kN

How To Use

- ♦ Refer to User Instruction Manual 



AFS510020R

Length: 20m
Weight: 8.1kg



AFS510030R

Length: 30m
Weight: 14.6kg