

BRUTE™ SERIES

BRUTE SEALED TYPE 3 RETRACTABLE FALL ARREST BLOCK WITH RETRIEVAL

KStrong has developed a range of Sealed Retractable Fall Arrest Blocks with an integrated Rescue Retrieval function. They are suitable for the most extreme environments. The heavy duty sealed design, corrosion resistant material used in the Block ensures the critical working components are kept free of dirt, grease, water, and chemicals. Ideally suited for Oil and Gas, Sewage Plants and all Offshore areas.



CE 0598

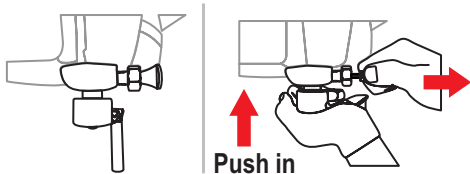
EN 360:2023,
IP69K as per ISO-20653,
Vibration Test IEC 60068-2-6:2007,
EN 1496:2017 Class B
AS/NZS 1891.3 2020
EN 80079-36:2016
EN 80079-37:2016
ATEX 2014/34/EU



IT IS EASY TO SHIFT TO WINCH MODE FROM BLOCK MODE (AND VICE VERSA) FOLLOWING THE BELOW STEPS

BLOCK MODE

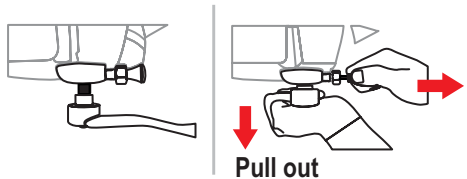
Enables easy movement of the user while working in confined space



Pull the pin and push the handle to reverse in Block mode

WINCH MODE

Enables easy retrieval of the victim post fall arrest



Pull the pin and handle to shift to Winch Mode

Features and Benefits

- High Impact Load Bearing Polymer Casing
- Ergonomic Carry Handle for ease of transportation
- Locking Pin to engage and release Fall Arrest and Rescue mode
- Integrated manual rescue mode function (hoisting and descending)
- Automatic Retractable Block
- Hydro Seepage System to allow water to be drained from block
- 4.8mm Stainless Steel Cable for added strength and safety
- Snout reduces the locking of the cable when it is suddenly released
- Load Capacity 140kg
- MBS: 15kN
- Temperature Range : -30° to +50° C
- ATEX Certified
- QR code for ease of Identification and Service History
- ANSI Stainless Steel Swivel Snap Hook with Fall Indicator

Materials

- Polymer & Stainless Steel Casing
- 4.8mm Stainless Steel Wire - MBS 15kN
- ANSI Stainless Steel Swivel Snap Hook - MBS 23kN
- ANSI Stainless Steel Karabiner - MBS 23kN

How To Use

- Refer to User Instruction Manual 



SCAN TO DOWNLOAD



AFS570020R

Length: 20m
Weight: 13.14kg



AFS570030R

Length: 30m
Weight: 19.3kg