

# BRUTE™ SERIES

## BRUTE TYPE 3 RETRACTABLE FALL ARREST WITH RETRIEVAL

KStrong has developed a range of Retractable Fall Arrest Blocks with an integrated Rescue Retrieval function that allows a person (after a fall) to be lifted up or down in a controlled manner, this eliminates the rescuer to descend to the person and reduces the amount of time involved to carry out the rescue.



**CE 0598**

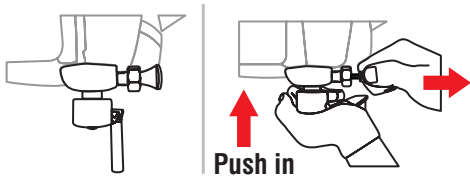
EN 360:2002

EN 1496:2017 Class B

**IT IS EASY TO SHIFT TO WINCH MODE FROM BLOCK MODE  
(AND VICE VERSA) FOLLOWING THE BELOW STEPS**

### BLOCK MODE

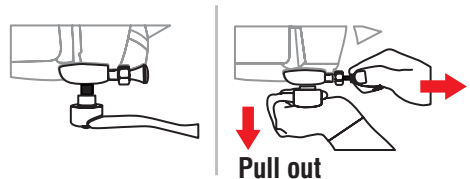
Enables easy movement of the user while working in confined space



Pull the pin and push the handle to reverse in Block mode

### WINCH MODE

Enables easy retrieval of the victim post fall arrest



Pull the pin and handle to shift to Winch Mode

### Features and Benefits

- ♦ Swivel Anchorage Eye
- ♦ High Impact Load Bearing Polymer Casing
- ♦ Ergonomic Carry Handle for ease of transportation
- ♦ Locking Pin to engage and release Fall Arrest and Rescue mode
- ♦ Integrated manual rescue mode function (hoisting and descending)
- ♦ Automatic Retractable Block
- ♦ Hydro Seepage System to allow water to be drained from block
- ♦ 4.5mm Galvanised Steel Cable for added strength and safety
- ♦ Snout reduces the locking of the cable when it is suddenly released
- ♦ Load Capacity 140kg
- ♦ MBS-15kN
- ♦ Temperature Range : -30° to +50° C
- ♦ QR code for ease of Identification and Service History
- ♦ Steel Swivel Snap Hook with Fall Indicator
- ♦ Can be supplied with Stainless Steel Cable and Stainless Steel Swivel Snap Hook on Request

### Materials

- ♦ Polymer Casing
- ♦ 4.5mm Galvanised Steel Wire - MBS 15kN
- ♦ Galvanised Steel Snap Hook - MBS 23kN
- ♦ Galvanised Steel Karabiner - MBS 23kN

### How To Use

- ♦ Refer to User Instruction Manual 



**AFS510020R**

Length: 20m  
Weight: 8.1kg



**AFS510030R**

Length: 30m  
Weight: 14.6kg