

MODULAR DAVIT WITH CORE MOUNTING SLEEVE ASSEMBLY

KStrong Extreme Davit systems have been designed for confined space entry / retrieval applications. Its modular interchangeable design allows the system to be mounted on multiple bases for all applications.

FEATURES

- The Extreme Core Mounting Davit breaks down into two components for easy storage, transport and setup. No tools are required for assembly. (MAST AFT756201 & Boom AFT756001)
- Core mounting sleeve assembly is a permanent solution for the structure.
- Core mounting sleeve assembly for installation on a concrete base.
- Base Installation must be approved to local regulations by a qualified engineer.





How To Use

Refer to User Instruction Manual

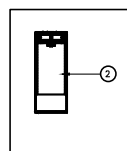
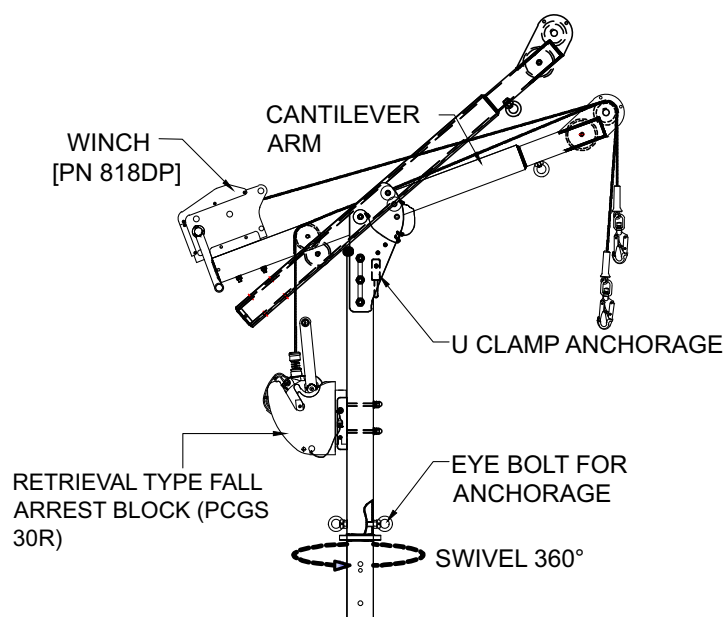
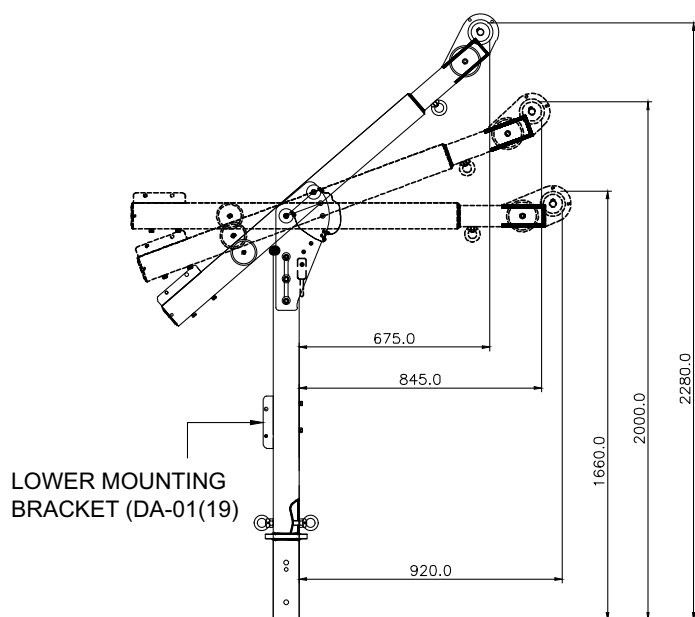


SCAN TO DOWNLOAD

Product Code	Picture	Bracket used for Mounting
Winch Bracket AFT710007UW		Winch AFT730020, AFT730040 AFT730042
Retrieval Bracket AFT710007UR		Retrieval Blocks AFS510020R, AFS510030R

Height Adjustment And Reach

Product Code	Upper	Middle	Lower
Distance from column	0.675 m	0.845 m	0.920 m
Height of arm	1.900 m	1.620 m	1.280 m



TECHNICAL SNAPSHOT

Material	High Strength and Durable Aluminium Alloy
Maximum Load Capacity	500 kg (for Confined Space Rescue) 250 kg (for Material Lifting as per Machine Directive)
Finish	Powder Coated
System Strength	15kN
Certification	EN 795:2012 Type A & AS/NZS 5532:2013
Weight	Mast & Boom: 44.44kgs \pm 0.10kgs Core Mounting Sleeve Assembly: 2.20 kgs \pm 0.10 kgs

DAVIT MAST

Features

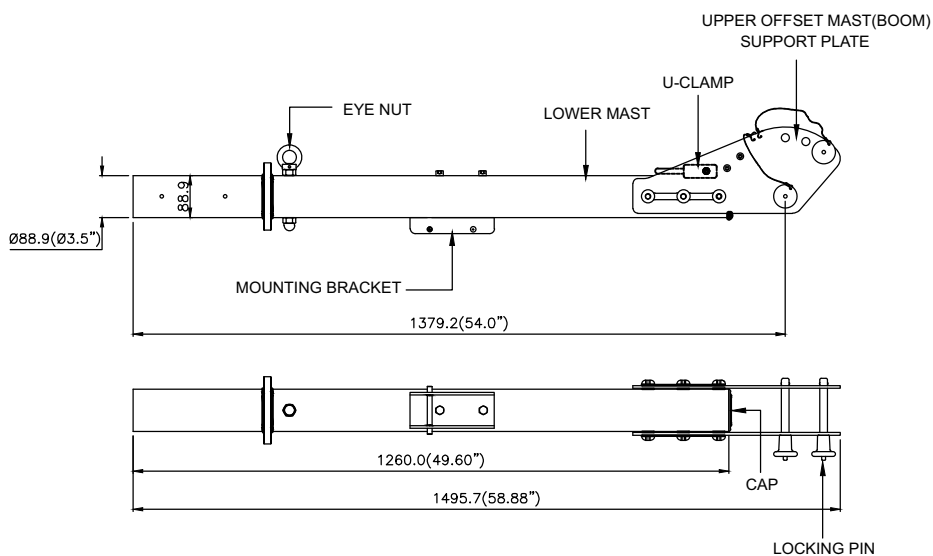
- Lower mast assembly is designed to be fixed on different davit system with H-Base davit, Wall/floor mounted, Hitch mounting davit/Concrete flush mounted davit.
- Comes with pre installed mounting bracket which is Compatible with Retrieval blocks by using universal mounting bracket.
- Upper offset mast (BOOM) support plate is designed to attach the Upper offset mast with the help of locking pins & can be adjusted at 3 defined positions.
- Additional eye nut is provide to use as an anchorage point in case of rescue.
- Cap is provided on top of assembly to prevent from ingress of water and dust particle.

Components

Lower mast	: Aluminium alloy, Powder Coated Black
Eye nut	: Stainless steel, electropolished / E Coated
Mounting bracket	: Alloy steel, ED coated black

Weight

18.089 kgs ± 0.20 kgs



DAVIT BOOM CANTILEVER ARM ASSEMBLY

Features

- Offset mast (BOOM) is designed to be fixed upon Lower mast assembly to make complete Davit system for confined space entry.
- Upper Offset Mast can be used with Lower mast of all models of davit system (i.e. H-Base mounting, Wall/floor mounted, Hitch mounting davit/Concrete flush mounted davits).
- Comes with pre-installed mounting bracket which is compatible to mount STRONG winches-
AFT730020, AFT730040, AFT730042, AFT730042SS, AFT730120, AFT730135
- Comes with pulleys, which are used for smooth movement of rope / wire used for lowering / lifting or rescue.
- Additional eye nut is provide to use as an anchorage point in case of rescue.

Components

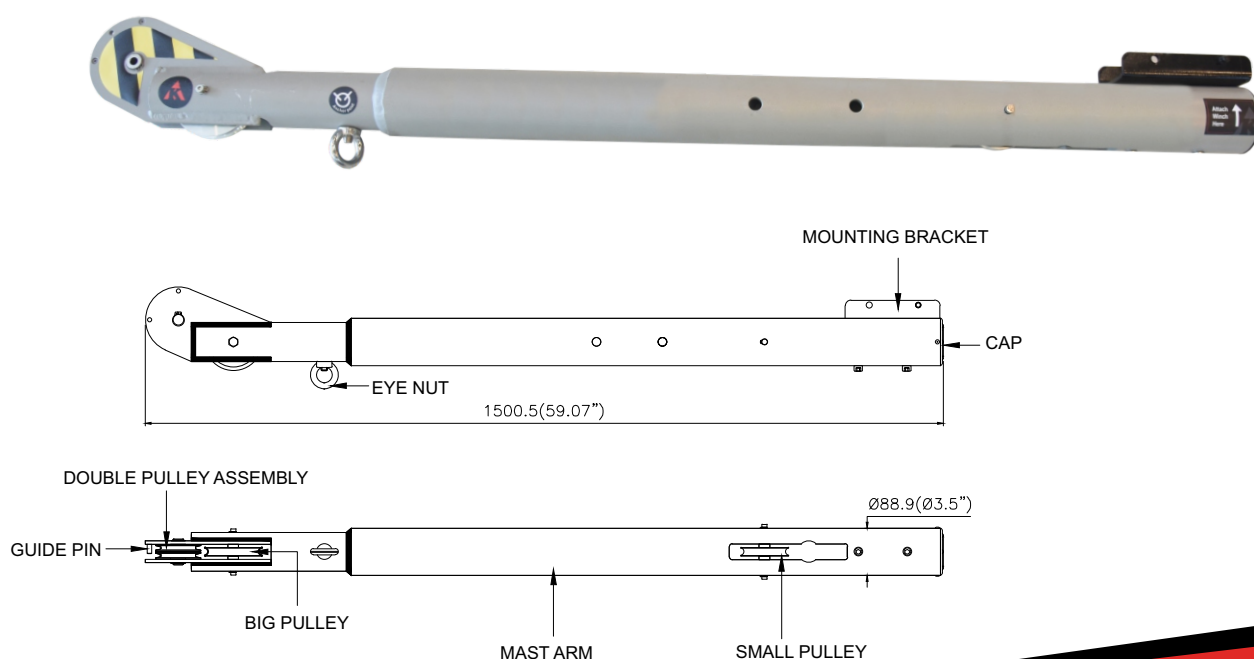
Mast arm & Big pulley	: Aluminium alloy, ED coated grey
Small pulley & Eye nut	: Stainless steel, electropolished / E Coated
Mounting bracket	: Alloy steel, ED coated black

System Strength

15kN

Weight

12.47 kgs ± 0.20 kgs



CORE MOUNTING SLEEVE ASSEMBLY

Features

- Core mounting sleeve can be permanently flushed in concrete during casting or by making drill at later stage.
- Product is used to mount davit column on concrete base.
- When not in use, sleeve can be closed sealed tight with help of mounting sleeve cap designed distinctly to prevent ingress of water and dust particle.

Components

Body	:	Stainless steel, Polished
Cap	:	Polymer, Polished

System Strength

14kN

Weight

2.20 kgs \pm 0.10 kgs

