

### H-BASE DAVIT ARM

KStrong Extreme Davit systems have been designed for confined space entry / retrieval applications. Its modular interchangeable design allows the system to be mounted on multiple bases for all applications.

#### FEATURES

- The 3 piece H-Base Davit breaks down into components for easy storage, transport and set-up. No tools are required for assembly. (H-Base AFT755001, Mast AFT756201 & Boom AFT756001)
- Cantilever arm comes with 3 adjustment positions for the user to adjust the height as per the requirement.
- An ideal choice to provide overhead anchorages in large holes of confined space.
- Removable legs for easy transportation and installation purpose.
- Anchorage points for rescue applications.
- Simple height adjustment arms with Mini Spirit level
- Multi anchorage point for rescue purpose.
- Inbuilt swivel feature, Davit column assembly can be rotated upto 360° (without a load) by removing the locking pins provided to lock column and H-Base.




#### How To Use

Refer to User Instruction Manual

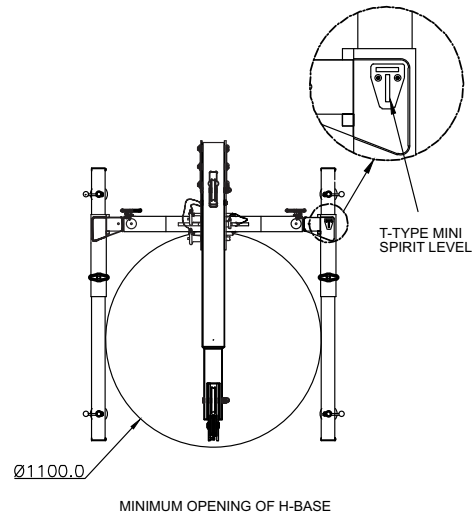
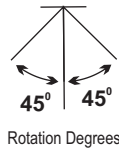
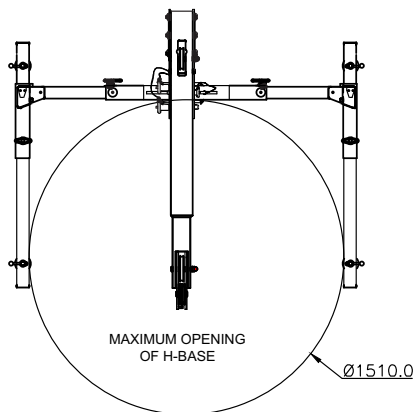
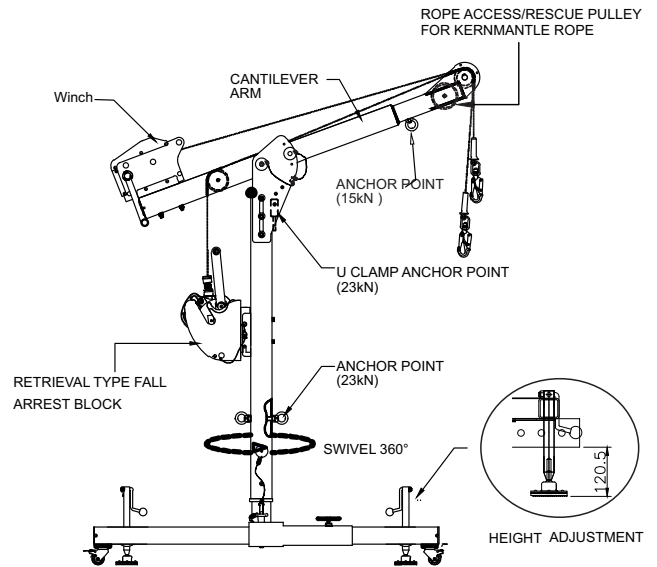
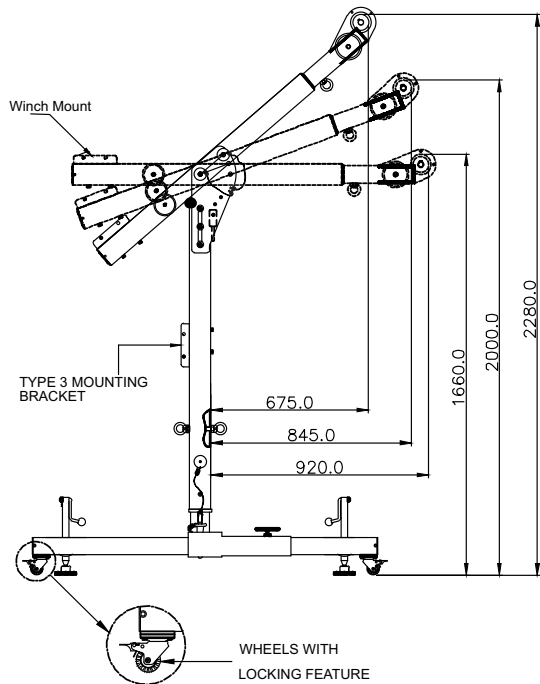


SCAN TO DOWNLOAD

Product Code	Picture	Bracket used for Mounting
Winch Bracket AFT710007UW		Winch AFT730020, AFT730040 AFT730042
Retrieval Bracket AFT710007UR		Retrieval Blocks AFS510020R, AFS510030R

#### Height Adjustment And Reach

Product Code	Upper	Middle	Lower
Distance from column	0.675 m	0.845 m	0.920 m
Height of arm	2.280 m	2.000 m	1.660 m



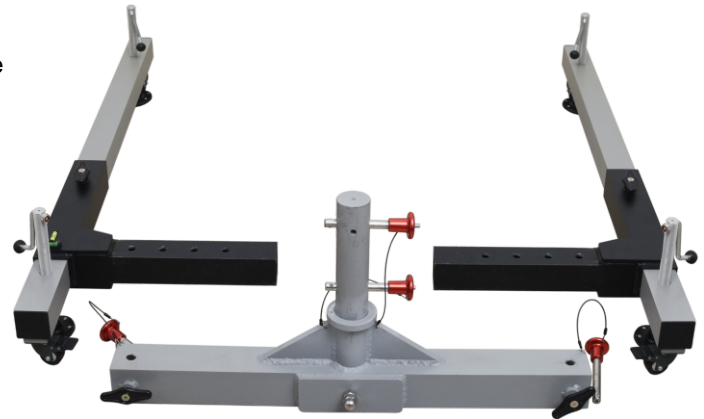
#### TECHNICAL SNAPSHOT

Material	High Strength and Durable Aluminium Alloy
Min. & Max. Opening of H Base	Ø1100 mm - Ø 1510 mm
Maximum Load Capacity	500 kg (for Confined Space Rescue) 250 kg (for Material Lifting as per Machine Directive)
Finish	ED Coated
System Strength	15kN
Certification	EN795:2012 Type B & AS/NZS 5532:2013
Weight	62.56kgs ± 0.10kgs

## 3 PIECE H-BASE

### Features

- H-Base assembly provides a safe and secure system for easy access to Confined space by making complete system with Lower mast & Upper offset mast (BOOM).
- Comes with inbuilt swivel feature, Lower mast assembly can be rotated even under load upto 360° by removing the locking pins provided to lock Lower mast & H-Base.
- A mini spirit leveler is attached in base assembly for proper leveling of Davit Legs height can also be adjusted to make the davit balanced at time of installation.
- Wheels are provide at bottom for easy movement of Davit system after assembly.



### Components

H-Base : Aluminum Alloy, ED Coated Grey & Black

### System Strength

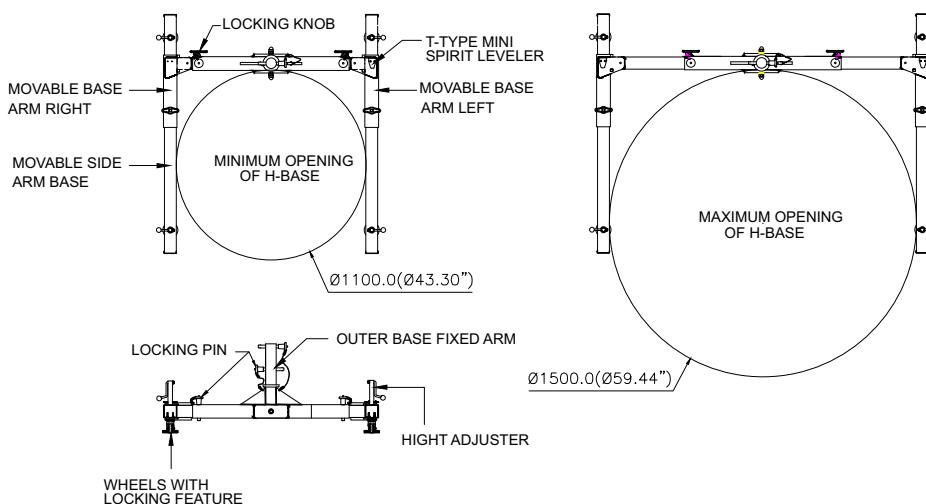
15kN

### Opening

Minimum Opening Ø1100.0(Ø43.30 inches) & Maximum Opening Ø1500.0(Ø59.44 inches).

### Weight

32.57 kgs ± 0.20 kgs



## DAVIT MAST

### Features

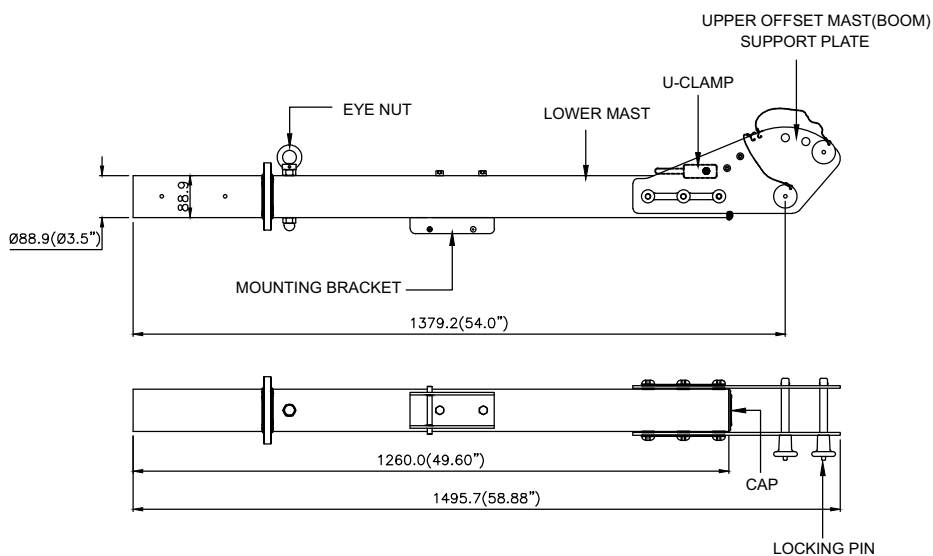
- Lower mast assembly is designed to be fixed on different davit system with H-Base davit, Wall/floor mounted, Hitch mounting davit/Concrete flush mounted davit.
- Comes with pre installed mounting bracket which is Compatible with Retrieval blocks by using universal mounting bracket.
- Upper offset mast (BOOM) support plate is designed to attach the Upper offset mast with the help of locking pins & can be adjusted at 3 defined positions.
- Additional eye nut is provide to use as an anchorage point in case of rescue.
- Cap is provided on top of assembly to prevent from ingress of water and dust particle.

### Components

Lower mast	: Aluminium alloy, Powder Coated Black
Eye nut	: Stainless steel, electropolished / E Coated
Mounting bracket	: Alloy steel, ED coated black

### Weight

18.089 kgs ± 0.20 kgs



# DAVIT BOOM CANTILEVER ARM ASSEMBLY

## Features

- Offset mast (BOOM) is designed to be fixed upon Lower mast assembly to make complete Davit system for confined space entry.
- Upper Offset Mast can be used with Lower mast of all models of davit system (i.e. H-Base mounting, Wall/floor mounted, Hitch mounting davit/Concrete flush mounted davits).
- Comes with pre-installed mounting bracket which is compatible to mount STRONG winches-  
AFT730020, AFT730040, AFT730042, AFT730042SS, AFT730120, AFT730135
- Comes with pulleys, which are used for smooth movement of rope / wire used for lowering / lifting or rescue.
- Additional eye nut is provide to use as an anchorage point in case of rescue.

## Components

Mast arm & Big pulley	: Aluminium alloy, ED coated grey
Small pulley & Eye nut	: Stainless steel, electropolished / E Coated
Mounting bracket	: Alloy steel, ED coated black

## System Strength

15kN

## Weight

12.47 kgs ± 0.20 kgs

