



USER INSTRUCTION MANUAL
MEGAPOD

THESE INSTRUCTIONS APPLY TO THE FOLLOWING MODELS:
AFT710007HD & AFT710010HD

CERTIFIED PRODUCT



AUSTRALIA & NZ STANDARDS
Certified to AS/NZS 5532:2013
Issued by BSI
Vide Lic. No.: BMP 760374

CE 0598

EN795:2012 Type B



II 2G Ex h IIc T6 Gb
EN ISO 80079-36:2016
EN ISO 80079-37:2016

ANSI Z 359.18-2017 TYPE A

Please read and understand the manufacturer's instructions for each component or part of the complete system. Manufacturer's instructions must be followed for proper use, care, and maintenance of this product. These instructions must be retained and be kept available for the user's reference at all times. Alterations or misuse of this product, or failure to follow instructions, may result in serious injury or death.

Note: The user is advised to keep this user instructions document for the life of the product.

▲ WARNING!

The products in this Instruction Manual are a part of a personal protective, work support, or rescue system. The user must read and follow the manufacturer's instructions for each component of the system. This manual contains information important to your safety and should be kept in a safe place for future reference. The instructions provided in this manual are meant for the use of this equipment and should be read thoroughly and understood by the user before the equipment is used. Manufacturer's instructions must be properly followed for the correct use and maintenance of this equipment. Please contact KStrong for any questions regarding the use of this equipment.

1. PRODUCT DESCRIPTION

The AFT71007HD & AFT710010HD Tripods are portable anchorage systems designed to provide a secure attachment point for personal fall arrest, work positioning, or confined space access systems when used with compatible PPE.

Typical Applications:

- Confined Space
- Entry Vertical Access & Egress
- Fall Arrest System

Standards & Compliance: When used correctly and in accordance with this User Instruction Manual, the AFT71007HD & AFT710010HD Tripods are intended to comply with relevant standards, including but not limited to:

- EN 795:2012 Type B – Personal fall protection equipment – Anchor devices (portable anchor devices)
- AS/NZS 5532 – Manufacturing requirements for single-point anchor devices (where applicable to anchorage function and configuration)

▲ Note:

Compliance is dependent on correct installation, compatible system components, user training, and site conditions. Always confirm site-specific, regulatory, and engineering requirements prior to use.

Important Note

While this equipment is designed to enhance safety, no item of PPE can provide absolute protection. Caution must always be exercised when performing activities involving risks. This manual is prepared to ensure safe and effective use of the Megapod Tripods. For any inquiries or further assistance, please contact KStrong email customer care@kstrongasia.com, customer care@kstrong.com.au or customer care@kstrong.co.nz.

2. TRAINING

To ensure that the user is familiar with the instructions provided in this manual, it is the responsibility of the user to undergo proper training for this, and for correct care and use of this equipment. It is also the employer's responsibility to ensure that all users are trained in proper use, inspection, and maintenance of Fall Protection Equipment.

3. POSSIBLE USAGE

The tripod is intended to:

- Act as a temporary anchorage device
- Be used with compatible fall arrest or confined space equipment
- Be installed on stable, load-bearing ground or structure

The tripod must NOT be used for:

- Lifting or suspending loads
- Applications outside manufacturer design intent
- Use on unstable, uneven, or non-load-rated surfaces

4. TECHNICAL SPECIFICATIONS:

Load Capacity:

- Personal Use: 200kg (rated for 2 users)
- Material Handling: 650kg for Rescue applications only
- Rating 23kN

5. IMPORTANT INFORMATION

- Inspect the equipment according to the manufacturer's instructions before each use.
- Inspection of equipment should be done on a regular basis by a qualified person, and the results must be recorded in the inspection log.
- DO NOT REMOVE product labels which include important warnings and information for the authorized person. "Authorized Person" is a person who is exposed to fall hazards during the course of their work. This individual requires formal training in the use of personal fall protection equipment and systems. The term "Authorized Person" may be used interchangeably with "User" and "End-User".
- DO NOT ALTER the equipment in any way.
- Always send the equipment back to the manufacturer or a KStrong Certified Service Centre or persons authorized in writing by the manufacturer for any repairs if required.
- Never use any natural material like Manila, cotton, etc. as part of a Fall Protection System.
- Fall protection equipment should only be used for the purpose for which it has been designed.
- This equipment should never be used for towing and hoisting or for any other purpose than its intended use.
- A competent person must ensure compatibility of the system to minimize any potential of accidental disengagement. Authorized persons or users shall be trained on all warnings and instructions provided in this manual.
- It is important for all authorized persons and users to refer to the applicable EN or AS/NZS Standards and to the regulations governing occupational safety.
- Take proper precautions to remove any debris, material, obstructions, etc., from the work area which could cause injury, or otherwise interfere with the functioning of the system.
- Always check for obstructions below the work area to make sure that the potential fall path is clear.
- Keep the equipment away from anything that could damage it such as sharp edges, rough or abrasive surfaces, high temperature surfaces, heat and welding sources, moving machinery, electrical hazards, etc.
- It is important to keep in mind environmental hazards when selecting fall protection equipment.
- Do not expose the equipment to chemicals, highly corrosive or caustic environments, or to direct sunlight and UV radiation, which may cause UV degradation.
- Such harmful environments require a more frequent inspection and servicing program of the fall protection equipment to maintain the integrity and safety of the equipment. Contact KStrong if in doubt.
- All the synthetic material of fall protection equipment must be protected from slag, hot sparks, open flames, or other heat sources.
- It is recommended that heat resistant materials are used in such applications.
- Allow adequate fall clearance below the work surface.
- Always have a Rescue Plan ready and at hand when using this equipment.

⚠ WARNING !!

If a fall were to occur, then the forces of impact could affect the user. Hence it is important to consider the age, fitness level and the health condition of the user before the equipment is put to use. Consult a physician in case the user is not feeling physically fit and has doubts about their ability to safely absorb the fall arrest forces. This equipment is not meant for use by pregnant women and minors.

- Immediately discard any product which is exhibiting unusual wear, deformity or deterioration.
- Immediately remove from service any equipment that has been subjected to a fall.

6. RESCUE PLAN

Rescue plan must be in place before performing work at height. The rescue operation must be performed by trained and competent personnel only. The rescue expert team should supervise the rescue operation performed. It is also advised to work in pairs while working on the site.

7. INSPECTION OF COMPONENTS OF PERSONAL FALL ARREST SYSTEM

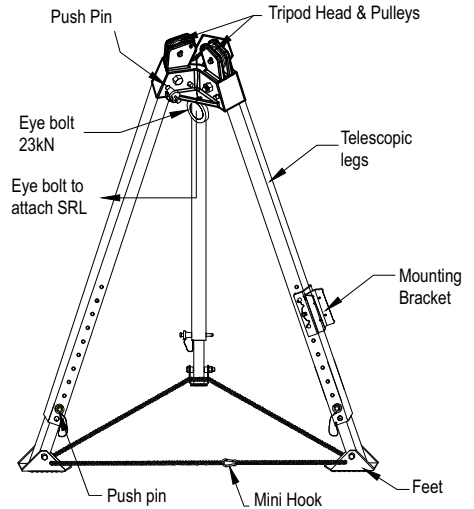
It is mandatory to have a detailed visual inspection of all the harnesses, lanyards, connectors etc. prior to each use. This ensures that the equipment is in good condition and is operating correctly. If there are any doubts regarding the safe state of product or if the product has been used to arrest a fall, then immediately withdraw the equipment and send it back to the manufacturer or to the qualified authorized repair center. Check on the back-shoulder straps of the harness for the fall indicators, which should be intact. If it is found to be deployed, then the harness should be removed from use immediately. Never attempt to repair or modify a Personal Protective Equipment (PPE).



8. PRE- USE CHECK :

Following points must be checked before use:

- Cracks, bends or deformation in legs or head assembly
- Corrosive, excessive wear, or sharp edges
- Locking pins are in its place and are properly working
- Pulley wire must be in good condition
- Eye bolt is secured must not have any cracks
- Telescopic legs are not damaged
- Mounting brackets are properly installed

**9. INSTALLATION INSTRUCTIONS****(i) Remove and Position the Tripod**

- Remove the tripod from its carry bag.
- Stand the tripod upright on a firm, flat surface with all rubberized feet firmly on the ground.
- For stability, ensure the surface is level before continuing.

(ii) Open and Lock the Telescopic Tripod Legs

- Swing each of the three legs outward until fully spread.
- Spread the legs until they butt against the head of the tripod then insert push pin to lock into place.
- Confirm that all three leg locking pins are flush with the top of the tripod head.
- This confirms the legs are fully secured.

(iii) Adjust Tripod Height - Each leg can be adjusted individually to achieve the required working height.

- Support the tripod to prevent tipping.
- Remove the push pin from the leg.
- Extend or retract the telescoping leg to the desired height
- Align the holes in the inner and outer leg tubes.
- Insert the push pin to lock leg into the desired height.

(iv) Secure the Legs with the Safety Chain

- Ensure the leg chain is fully taut when the tripod is fully extended, preventing the tripod legs from over-extending beyond their locked position.
- The chain must pass through all three legs to maintain stability and keep the load centered.
- While holding the legs in position, pull the chain tight.
- Secure the chain ends using the mini hook.

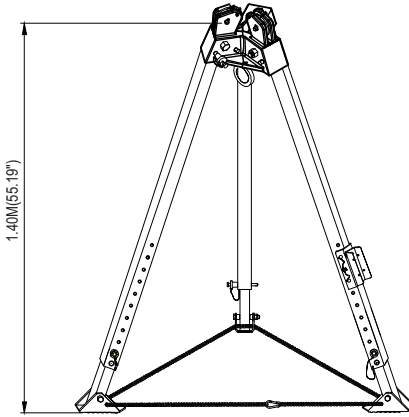
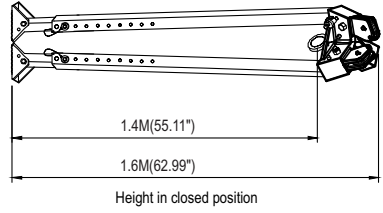
(v) Final Positioning and Safety Checks

- Position the tripod so the center eyebolt anchor point is directly over the entry shaft or opening.
- Ensure the tripod feet are set back from the edge, allowing adequate clearance.
- Confirm the tripod is stable and properly aligned.
- If adjustment is required, remove and reinsert push pins one leg at a time while maintaining tripod stability.
- Recheck all pins, chain tension, and footing before use.

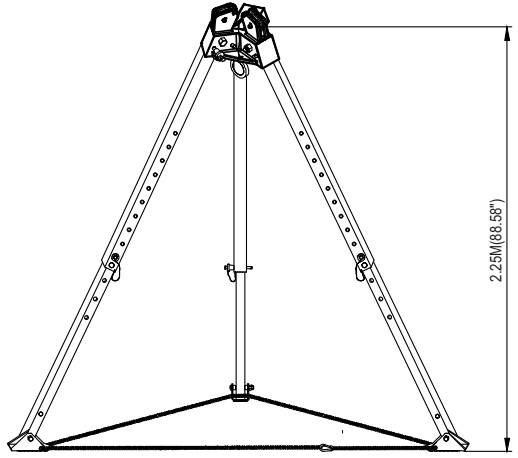
10. Megapod Height & Foot Print:

Height Ranges:

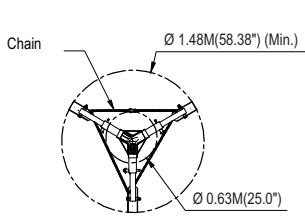
- **AFT710007HD:** Usable height from 1.40m to 2.25m



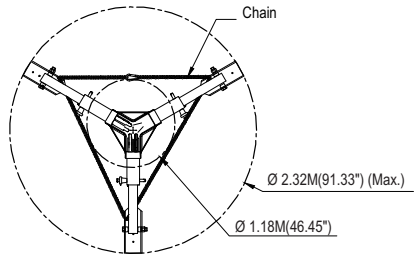
Minimum Usable Height



Maximum Usable Height



Foot print diameter at minimum height



Foot print diameter at maximum height

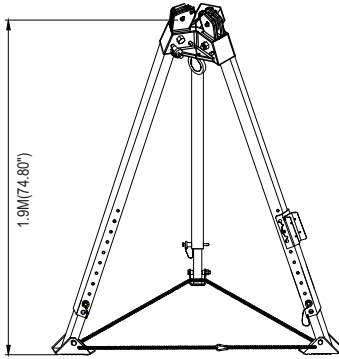
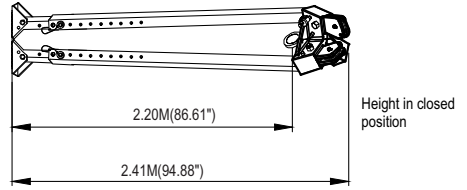
Height Adjustment Hole Placement:

HOLE NO. FROM BOTTOM LEG	OVERALL HEIGHT	OUTER OPENING RADIUS
6	Max. 2250.0mm	Max. R2320.0mm
5	2218.0mm	R2277.0mm
4	2172.0mm	R2235.0mm
3	2126.0mm	R2192.0mm
2	2080.0mm	R2149.0mm
Bottom leg 1	Min. 1400.0mm	Min. R1483.0mm

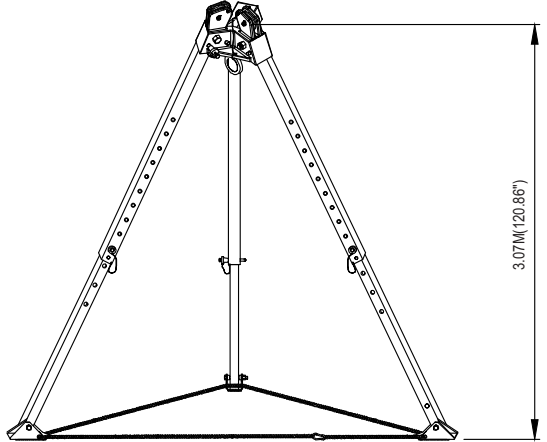
11. Megapod Height & Foot Print:

Height Range:

- **AFT7100010HD:** Usable height from 1.90m to 3.07m

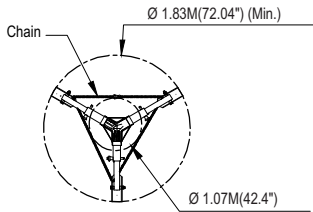


Minimum Usable Height

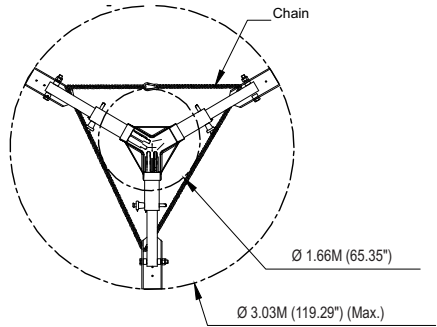


Maximum Usable Height

Foot Print Dimensions:



Foot print diameter at minimum height

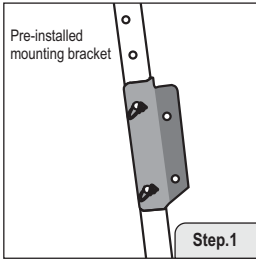


Foot print diameter at maximum height

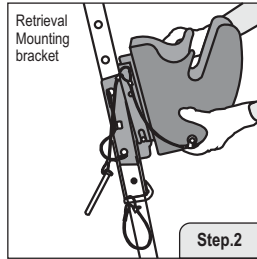
Height Adjustment Hole Placement:

HOLE NO. FROM BOTTOM LEG	OVERALL HEIGHT	OUTER OPENING RADIUS
6	Max. 3070.0mm	Max. R3034.0mm
5	2982.0mm	R2991.0mm
4	2936.0mm	R2948.0mm
3	2890.0mm	R2905.0mm
2	2844.0mm	R2863.0mm
Bottom leg 1	Min. 1900.0mm	Min. R1835.0mm

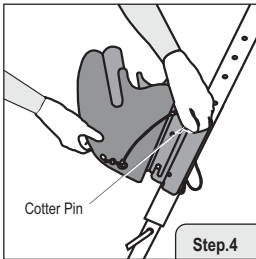
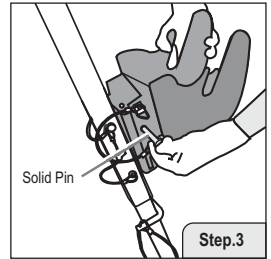
12. INSTALLATION OF TYPE 3 SRL ON THE HEAVY DUTY TRIPOD (AFT710007HD / AFT710010HD)



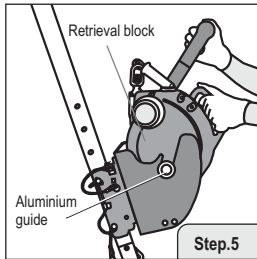
Identify the tripod leg that has the pre-installed mounting bracket intended for Type 3 SRL installation.



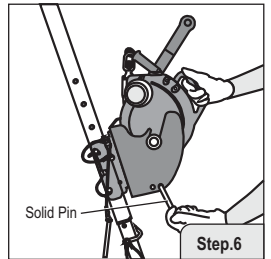
Position the retrieval mounting bracket on the pre-installed tripod leg mounting bracket and insert the guiding pin into the slot.



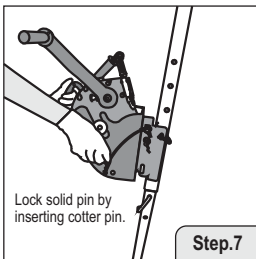
Lock the Type 3 SRL mounting bracket to the pre-installed tripod leg mounting bracket using the solid pin. Secure the solid pin with a cotter pin.



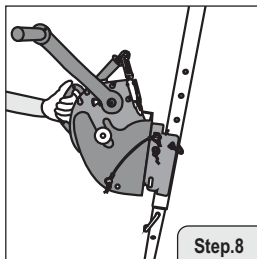
Insert the Type 3 SRL into the bracket, ensuring it is guided by the aluminum guides provided on both sides of the Type 3 SRL.



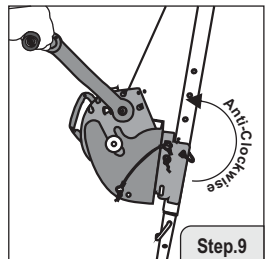
Once in position, secure the anchorage eye to the bracket, by inserting the solid pin.



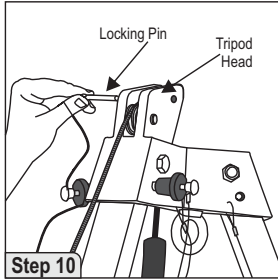
Insert the cotter pin into the opposite end of the solid pin to lock it in place.



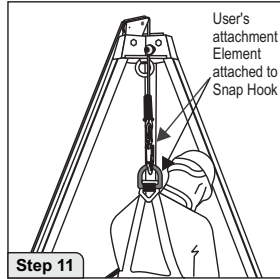
Release the Type 3 SRL cable and pass it through the top pulley of the tripod.



Pull the winch handle outward and rotate it anticlockwise to release the steel wire. Continue releasing until sufficient length is available for the wire to pass over the tripod pulleys and hang vertically downward.



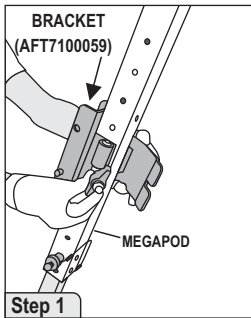
Insert the locking pin into the tripod head, allowing the wire cable to move securely with the pulley without detaching.



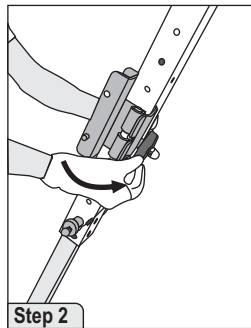
Connect the designated attachment point of the harness to the person using the snap hook. Ensure the snap hook is fully engaged and locked. The person may then be raised or lowered by operating the winch handle.

Now repeat for for KStrong Winches.

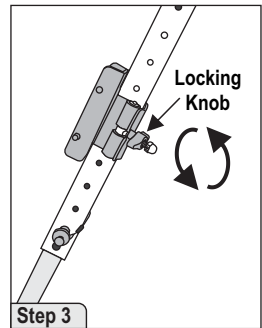
13. INSTALLATION OF BRACKET (AFT7100059)-



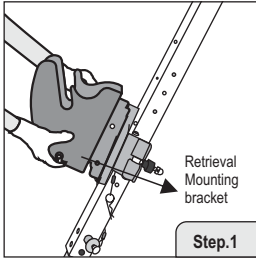
Place the bracket on top of the Megapod leg and align it with the small locating holes. Insert the bracket pin into the holes, ensuring the bracket sits squarely on the leg at the desired height.



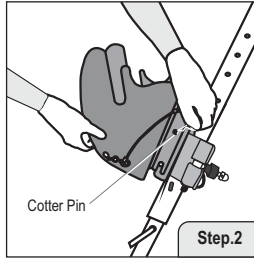
Insert the locking knob into the bracket slot by rotating.



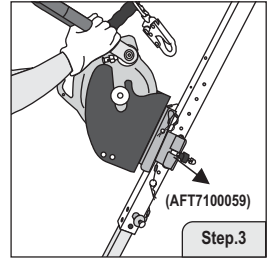
Rotate the knob clockwise until it is fully tightened. The bracket is now ready for use.

14. INSTALLATION OF TYPE 3 SRL on AFT7100059-

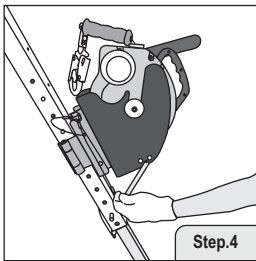
Position the retrieval mounting bracket on the pre-installed mounting bracket (AFT7100059) and insert the guiding pin into the slot.



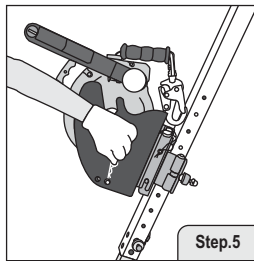
Lock the Type 3 SRL mounting bracket to the pre-installed tripod leg mounting bracket using the solid pin. Secure the solid pin with a cotter pin.



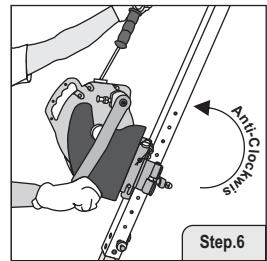
Insert the Type 3 SRL into the bracket, ensuring it is guided by the aluminum guideaxs provided on both sides of the Type 3 SRL.



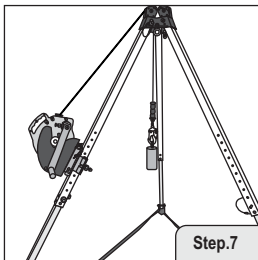
Once in position, secure the anchorage eye to the bracket, by inserting the solid pin.



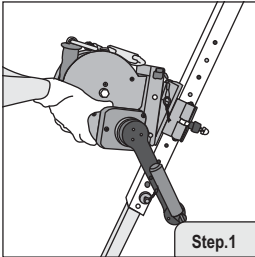
Insert the cotter pin into the opposite end of the solid pin to lock it in place.



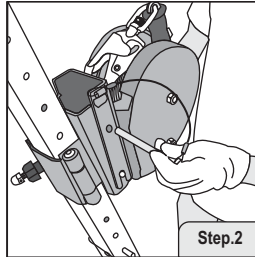
Pull the winch handle outward and rotate it anticlockwise to release the steel wire. Continue releasing until sufficient length is available for the wire to pass over the tripod pulleys and hang vertically downward.



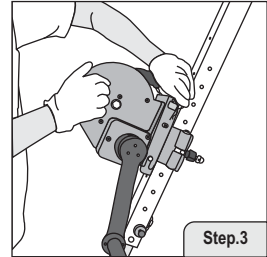
Now to Product is Ready for use.

15. INSTALLATION OF WINCH ON AFT7100059-

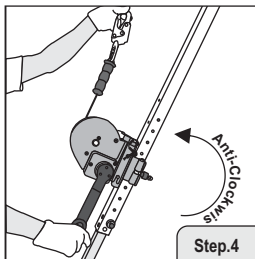
Place the winch over the bracket (AFT7100059) on provided slot.



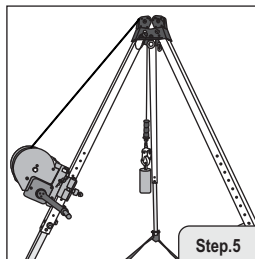
Once in position, secure the bracket, by inserting the solid pin.



Insert the cotter pin into the opposite end of the solid pin to lock it in place.



Pull the winch handle outward and rotate it anticlockwise to release the steel wire. Continue releasing until sufficient length is available for the wire to pass over the tripod pulleys and hang vertically downward.



Now to Product is Ready for use.

16. LIMITATIONS:

- Megapod should be the personal property of its user.
- It should not be used in highly acidic or basic environment.
- The anchor device is rated for two persons.
- When the anchor device is used as part of a fall arrest system, the user shall be equipped with a means of limiting the maximum dynamic forces exerted on the user during the arrest of a fall to a maximum of 6kN.
- The maximum load allowable for Personal use is 200kg & Material Handling is 650kg . The direction of loading will always be in vertical.
- The anchor device should only be used for personal fall protection equipment and not for lifting equipment.

- Standard packaging supplied from manufacturer should be used during transportation to protect the equipment against damage.
 - It is essential for the safety of the user that if the product is resold outside the original country of destination, the reseller must provide instructions for use, maintenance, periodic examination and repair in the language of the country in which the product is to be used.
 - There is no deflection on Anchor device or Anchor point.
- 17. COMPATIBILITY :** To optimize protection, in some instances it may be necessary to use the product with suitable PPE such as: boots/ gloves/ helmet and ear protection. In this case, before carrying out the risk-related activity, consult your supplier to ensure that all your protective products are compatible and suitable for your application.
- 18. REPAIR:** If the product becomes damaged, it will NOT provide the optimum level of protection, and therefore should be immediately removed from service. It needs to be inspected to see if it is replaced or repaired. Never use the damaged product. Repair is only permitted by the manufacturer or a nominated repair centre or individual approved by the manufacturer.
- 19. CLEANING & MAINTENANCE:** In case of minor soiling, wipe the product with cotton cloth or a soft brush. Do not use any abrasive material. For intensive cleaning wash the product in water at a temperature between 30° C to 60° C by using a neutral detergent (pH 7). The washing temperature should not exceed 60°C. Do not use acidic or basic detergents.
- 20. STORAGE AND TRANSPORT:** When not in use, store the product in a well-ventilated area away from heavily acidic or basic environment. Never place heavy items on top of it. Also ensure that the tripod is stored away from chemically hazardous environment. Preferably storage should be in a dry environment. Always use manufacturer's standard packaging during transportation to protect it from damage or moisture.
- 18. WITHDRAWAL FROM USE:** If the system has been used to arrest a fall, it should be removed from service and returned to the manufacturer or a competent repair centre for servicing and re testing.
- 21. WARNING:**
- Ensure that the medical condition of the user does not affect his safety in normal and in emergency cases.
 - The equipment shall only be used by a person trained and competent in its safe use.
 - A rescue plan shall be in place to deal with any emergencies that could arise during work.
 - Do not make any alterations or additions to the equipment without the manufacturer's prior written consent, and that any repair shall only be carried out in accordance with manufacturer's procedures.
 - The equipment shall not be used outside its limitation, or for any purpose other than that for which it is intended.
 - Any dangers that may arise by the use of combinations of items of equipment in which the safe function of any one item is affected by or interferes with the safe function of another.
 - Ensure that the harness used conforms to EN 361 and the karabiner is connected to attachment elements of the harness; also ensure that harness has an attachment located appropriately to the fall arrester.
 - For equipment intended for use in fall arrest systems, we emphasise that it is essential for safety that the anchor device or anchor point should always be positioned and the work carried out in such a way as to minimise both the potential for falls and potential fall distance. Where it is essential that the anchor device/point is placed above the position of the user, the manufacturer shall make a statement to that effect.
 - A full body harness is the only acceptable body holding device that can be used in a fall arrest system.
 - For equipment intended to be used in fall arrest systems, we emphasise that it is essential for safety to verify the required free space beneath the user at the workplace before each occasion of use, so that in case of a fall there will be no collision with the ground or other obstacle in the fall path.
 - Remove all slack from the adjustment chain by loosening the quick connect at the feet of Megapod legs. Do not use the Megapod if chain is not present. Doing so may result in serious injury or even death.

Certification Body :

SATRA Technology Europe Ltd, Bracetown Business Park, Clonee, Dublin D15 YN2P Ireland (Notified Body 2777)

Ongoing Assessment Body:

SGS Fimko Oy, Takomotie 8, FI-00380 Helsinki, Finland (Notified Body 0598)

Certification Body & Ongoing Assessment Body (Australia & New Zealand Standards)

BSI Group ANZ Pty Ltd, Suite 1, Level 1, 54 Waterloo Road, Macquarie Park, NSW 2113, Australia.



KStrong Asia Pte Ltd
12-05 OG Albert Street,
Complex AT Singapore 189969

Contact Email:
customer@kstrongasia.com
www.kstrong.com

KStrong Australia Pty Ltd
Unit 4-5 20 Lath Place, Unanderra,
New South Wales, Australia 2526

Contact Email:
customer@kstrong.com.au
www.kstrong.com

Kstrong New Zealand Ltd
5 Pakura Place, Castlecliff,
Whanganui, New Zealand 4540

Contact Email:
customer@kstrong.co.nz
www.kstrong.com

USA

South America

Asia

Australia

New Zealand

KS GROUP