

LADDER TOP & BOTTOM MOUNT EXTREMITY ED COATED STEEL BRACKET AFF7500

AFF513754(EC)

Features

- ED Coated Steel Ladder mounted extremity bracket used to install a vertical anchor line by attaching the wire rope installed on
- Suitable for both top and bottom mounts.
- The unique design of the brackets can easily be attached to both round and square ladder rungs
- Suitable for ladder rung spacing between 250mm - 350mm
- Suit ladder rung Diameter: Ø16.0mm to Ø52.0mm.
- Can be used with AFF6000 & AFF7000 Systems

How To Use

Refer to User Instruction Manual



SCAN TO DOWNLOAD

Metal Components

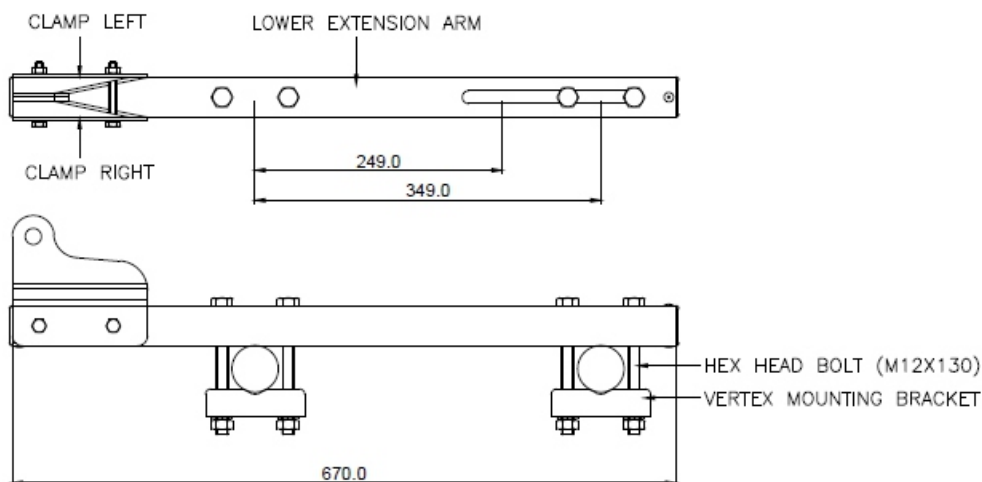
Ladder Mount	:	High Strength Steel, ED Coated
Bolts	:	316 Stainless M12 x 130
Minimum Breaking Strength	:	15kN

Weight

3.90 Kgs. ± 0.20 kgs.

Relevant Standards

Conforms to EN 795:2012 Type A & AS/NZS 5532:2013



COMPATIBLE SUPPORT SECTION	●	□	└	T	I
PROCESS					

