

# UNIVERSAL EXTREMITY ANCHOR PLATE (AFF4000)

AFF113710

## Features

- Stainless steel Universal Extremity plate is used to create an anchor point at the ends of the lifeline.
- Supplied with M16x50 fasteners to install it on Structural Steel
- For Concrete installation use M12 Chemical Fastener (refer to Hilti HVU installation guide & Chemical Adhesive Capsule)
- Rated for 4 users



## How To Use

Refer to User Instruction Manual



SCAN TO DOWNLOAD

## Metal Components

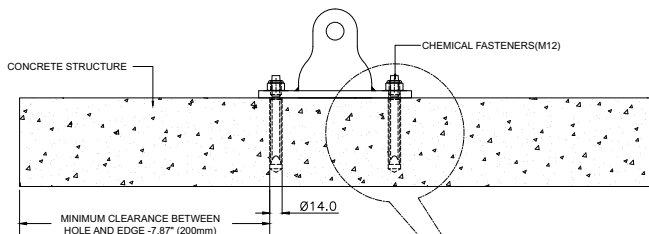
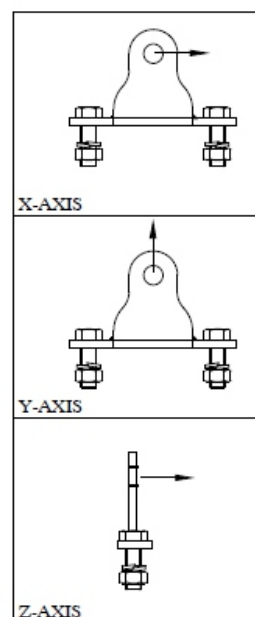
Anchor Plate	:	316 Stainless Steel : Electro-Polished
Bolts (M16)	:	316 Stainless Steel
		45kN (X Axis)
Minimum Breaking Strength	:	45kN (Y Axis)
		45kN (Z Axis)

## Weight

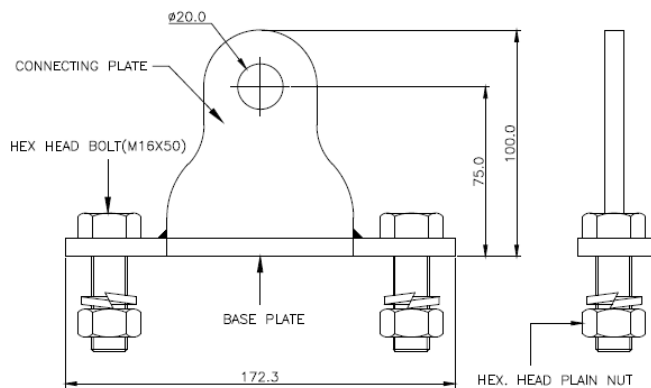
700 gm

## Relevant Standards

Conforms to EN 795:2012 Type A & TS16415:2013 Type A



Concrete Installation



Metal Installation

