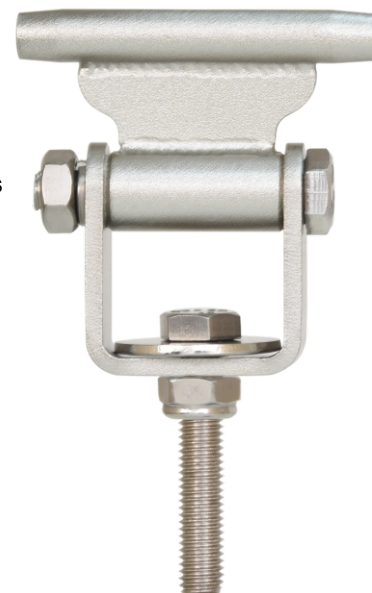


INTERMEDIATE SWIVEL 220 DEG BRACKET (AFF4000)

AFF111525

Features

- The Intermediate bracket is designed to reduce the sag over large distances when spaced correctly along the entire length of the 8mm Wire rope system.
- Automatic pass-through for the users trolley
- 220° orientation adjustment.
- Can be installed on ground, wall, roof and ceiling
- Easily mounted on various KStrong posts
- M12 Fasteners used to install on posts
- For Concrete installation M12 Chemical Fastener refer to Hilti HVU installation guide
- Maximum force exerted on the Intermediate will not be greater than 11.5kN for 4 users
- The strength of the Intermediate is 28kN
- Compatible with KStrong traveler for smooth travel along the length of lifeline.



How To Use

Refer to User Instruction Manual



SCAN TO DOWNLOAD

Distance between Two Intermediate Brackets

For Overhead Application	:	15 mtrs. maximum
For Roofs (PEB)	:	15 mtrs. maximum
For Standing Seam Roof	:	12 mtrs. maximum

Material

Intermediate Bracket	:	Stainless Steel 316 Electro-polished
Mounting Bolt	:	M12 Bolt, SS316, Grade A4-70

Weight

0.300 kg ± 0.010 kg

