

# CONSTANT FORCE ENERGY ABSORBER POST FOR STANDING SEAM ROOF

AFA935340

## Features

- Designed with an inbuilt shock absorption mechanism which activates in the event of a fall and reduces the forces on the user's body to bearable limit.
- Designed to be installed on standing seam roof top with help of specially designed Seam Clips & fasteners.
- Easy and quick to install to suit Seam bulb up to 23.0 mm.
- The post deploys in the event of a fall to absorb the energy hence leaves the roof panel intact to maintain architectural integrity.
- Suitable for Seam distances of 300mm - 650mm

## How To Use

Refer to User Instruction Manual



## Metal Components

Base Plate	:	316 Stainless Steel: Polished
Post & Eye	:	316 Stainless Steel: Polished
Minimum Breaking Strength	:	15 kN

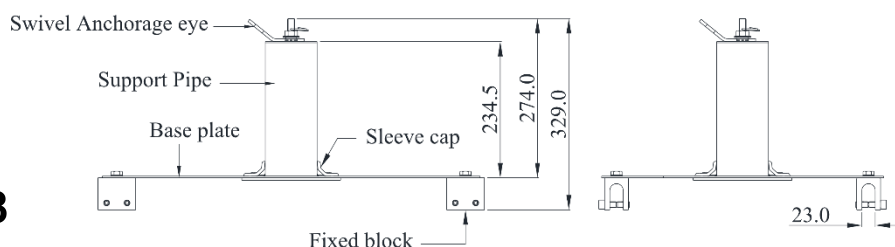
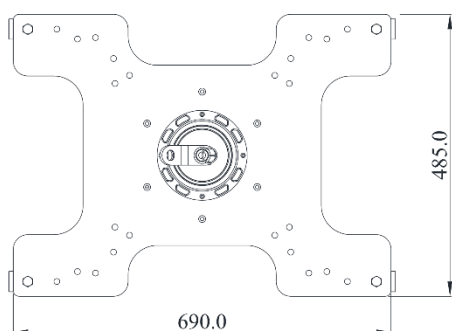


## Weight

10.410 kg ± 0.050 kg

## Relevant Standards

Conforms to EN 795:2012 Type A & TS 16415:2013 Type A



CE 0598