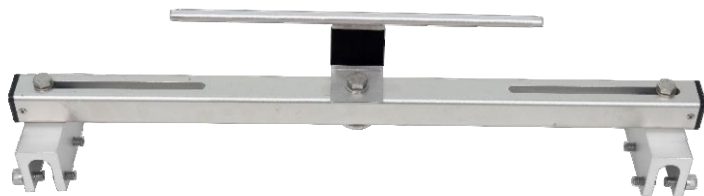


# IMPACT VARIABLE CORNER BEND POST FOR STANDING SEAM ROOF

AFA935171(CB)

## Features

- The Variable Corner Bend Post is designed with an inbuilt shock absorption mechanism which activates in the event of a fall and reduces the forces on the user's body to bearable limit and leaves the Standing Seam roof panel intact to maintain architectural integrity.
- The Variable Corner bend tube is attached to the intermediate which provides an angle change in the system, internal or external up to 40 degrees.
- Designed to be installed on Standing Seam roof Profiles with a specially designed bracket assembly with a span distance of 650mm.
- To form the tube to the correct angle, refer to UIM.
- Suitable for 4 users in a System.



## How to Use

Refer to User Instruction Manual



## Metal Components

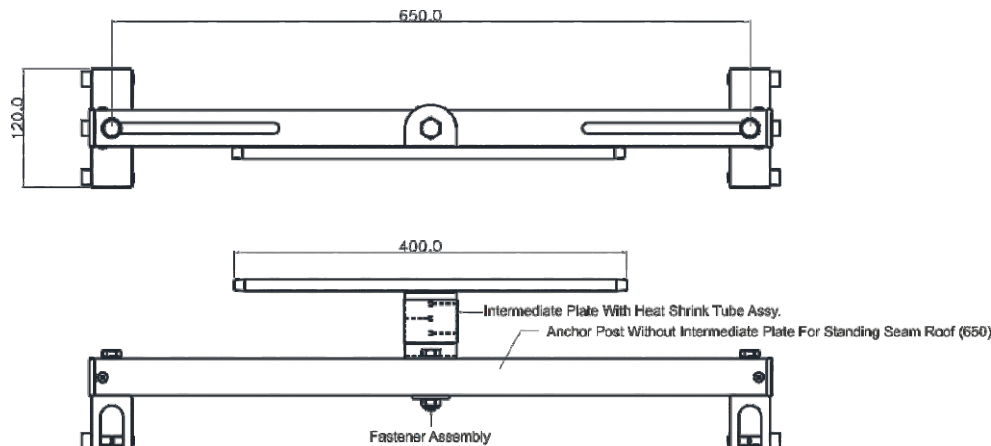
Cross Arm	:	6061 T6 Aluminum: Anodized
Post & Intermediate	:	316 Stainless Steel, Polished
Bracket & Clamps	:	6005 T5 Aluminum: Anodized
Bolt	:	SS316 Grade A4-70
Minimum Breaking Strength	:	15kN

## Weight

316 Stainless Steel

2.81 kgs

Conforms to EN 795:2012 Type A, TS16415:2013 Type A & AS/NZS 5532:2013



CE 0598