

IMPACT KLIPIK EXTREMITY POST (AFF4000)

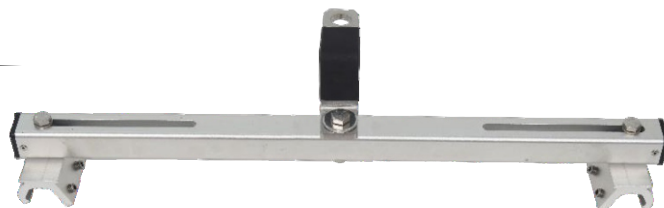
AFA935168

Features

- Designed as Extremity Posts for a Horizontal lifeline on a Kliplok
- Roof profile with a span distance of 320 mm – 650 mm.
- Built in energy absorbing Anchor which reduces the impact on users and roof profiles in the event of a fall.
- Anchorage eye provides universal connection & can be used as an anchorage point.
- Rated for 4 users when used in a Lifeline System.

How To Use

Refer to User Instruction Manual



Metal Components

Cross Arm	:	6061 T6 Aluminum: Anodized
Anchor Point	:	316 Stainless Steel: Polished
Kliplok Clips	:	6061 T5 Aluminum: Anodized
Bolt & Grub Screws	:	M10 SS316 Grade A4-70
MBS	:	15kN

Weight

2.47 kg ± 0.05 kg

Relevant Standards

Conforms to EN 795:2012 Type A & TS16415:2013 Type A
AS/NZS 5532:2013

