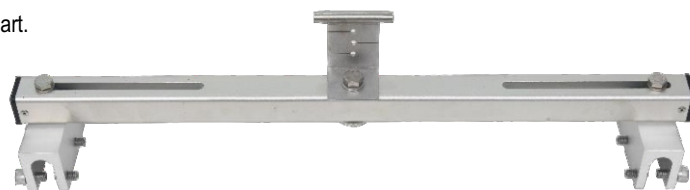


IMPAXX INTERMEDIATE POST FOR STANDING BROAD SEAM 750MM SPAN (AFF4000)

AFA935157BS

Features

- Roof top Intermediate post is designed to be fixed on standing seam roof profiles and spaced along the Horizontal Lifeline installed on the roof.
- Built in energy absorbing intermediate which reduces the impact on users and roof profiles in the event of a fall.
- It divides along the Horizontal Line into multiple Spans which reduces the sag on the line and holds the wire in position along length of the system.
- The Intermediate can be adjusted to fit on standing seam roof with different seam distance between 320 mm to 750 mm.
- Intermediate can be spaced between 5m - 15m apart.
- Rated for 4 users when used in a Lifeline System.



How to Use

Refer to User Instruction Manual



Metal Components

Cross Arm	:	Aluminum 6061 T6, Anodized Clear
Intermediate	:	316 Stainless Steel: Electro-Polished
Seam Clips	:	6005 T5 Aluminum: Anodized
Bolt & Grub Screws	:	SS316 Grade A4-70
Minimum Breaking Strength	:	15kN

Weight

2.962 kg \pm 0.020 kg

Relevant Standards

Conforms to EN 795:2012 Type A & TS16415:2013 Type A
AS/NZS 5532:2013

