

STANDING SEAM INTERMEDIATE POST (AFF4000)

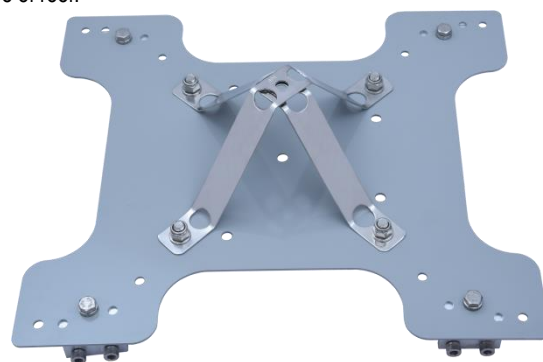
AFA935152

Features

- Roof top Intermediate post is designed to be fixed on standing seam roof profiles as spaced along the Horizontal Lifeline installed on the roof.
- The base plate has series of holes to fit on standing seam roof with different seam distance between 300 mm to 500 mm.
- The width of the base have an adjustable opening to adopt to the type of roof.
- Intermediate can be spaced between 5m - 15m apart.

How To Use

Refer to User Instruction Manual

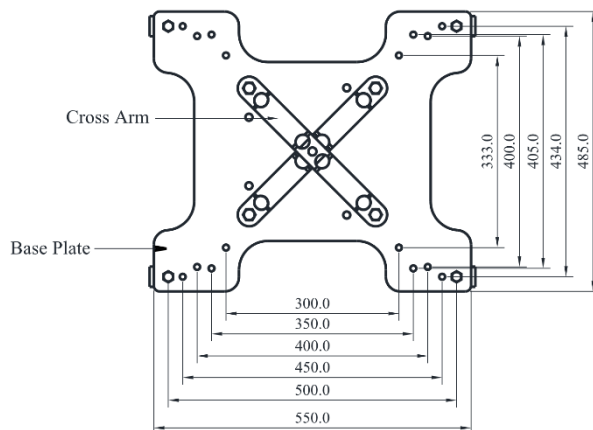


Metal Components

Cross Arms	:	316 Stainless Steel : ED Coated Grey
Base Plate	:	316 Stainless Steel : ED Coated Grey
Seam Clips	:	Aluminum
Bolts	:	SS316 Grade A4-70
Minimum Breaking Strength	:	15kN

Weight

6.322 kg + 0.050 kg



Aluminium bracket for standing seam post (AFA935170)