

STANDING SEAM EXTREMITY POST (AFF4000)

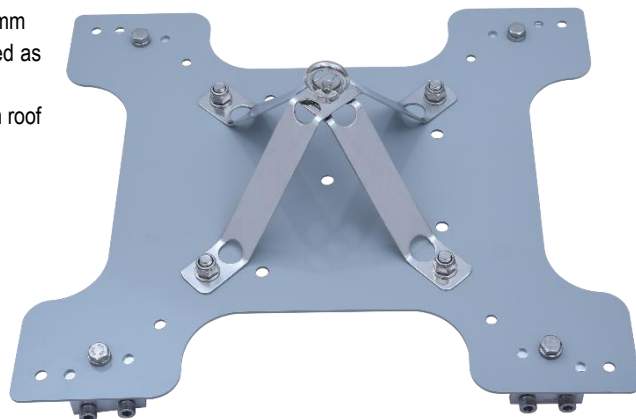
AFA935102

Features

- Designed as Extremity Posts for a Horizontal lifeline on a Standing Seam Roof with a seam distance of 300mm - 500mm
- Anchorage eye provides universal connection & can be used as an anchorage point.
- Comes with series of holes to adopt different standing seam roof profiles.

How To Use

Refer to User Instruction Manual



Metal Components

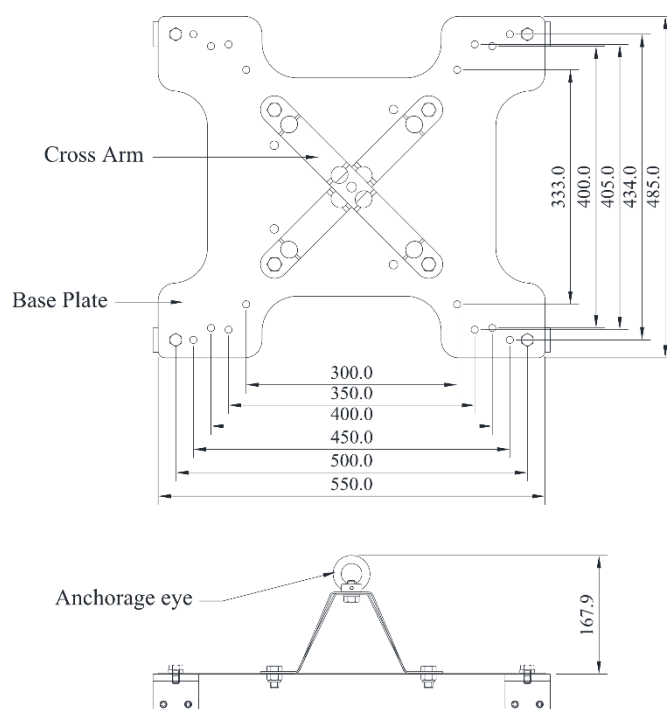
Base Plate	:	316 Stainless Steel: ED Coated Grey
Cross Arm Straps	:	316 Stainless Steel: ED Coated Grey
Anchorage Eye	:	316 Stainless Steel: ED Coated Grey
Standing Seam Clips	:	Aluminum
Bolts	:	M10 SS316 Grade A4-70
Minimum Breaking Strength	:	15 kN

Weight

6.525 kg ± 0.050 kg

Relevant Standards

Conforms to EN 795:2012 Type A & TS16415:2013 Type A



CE 0598